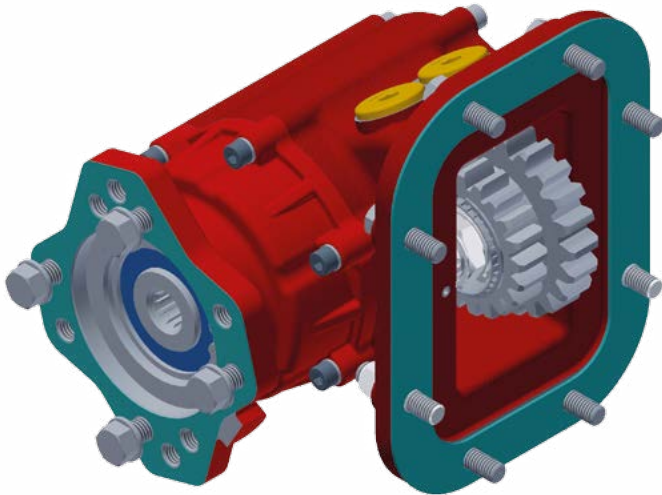


Bottom, Pneumatic
Inferior, Neumático

Description Descripción



Hot shift 8 bolt 2 gears Pneumatic, bottom PTO. Several internal ratios. Both possibilities of assembly 1 and 3 in the same housing. All input gears from 1000 / 2000 pto fit on this series.

Toma de fuerza de 8 taladros, 2 piñones con embrague incorporado. Accionamiento neumático Diferentes relaciones de transmisión. Mismos engranajes de ataque que la serie 1000/2000 cubriendo la mayoría de cajas de cambio del mercado.

Main Data Datos Principales

Mounting position Lado de montaje	Right, Left Derecho, Izquierdo
Pump rotation Sentido de giro de la bomba	Left Izquierdo
Weight Peso (Lb)	60
Engine to PTO ratio Relación motor - Toma de Fuerza	See application book Consultar libro de aplicaciones

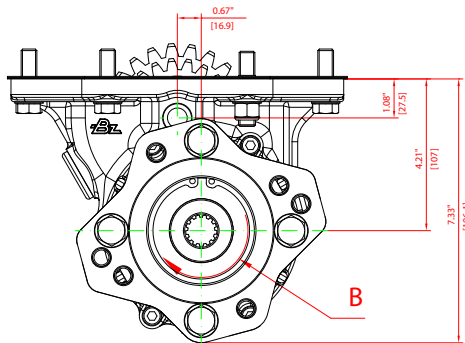
Torque working, with an engage pressure of 116 PSI or higher
Par nominal trabajando con presión de accionamiento de 8 bar

INTERNAL RATIO	INTERMITTENT SERVICE			CONTINUOUS SERVICE		
	Torque (Lb. FT)	Power (HP)		Torque (Lb. FT)	Power (HP)	
		At 500 r.p.m.	At. 1000 r.p.m.		At 500 r.p.m.	At. 1000 r.p.m.
40% (Z)	250	25	49	178	18	35
50% (A)	250	25	49	178	18	35
55% (B)	250	25	49	178	18	35
73% (C)	250	25	49	178	18	35
86% (E)	225	22	44	160	16	31
95% (J)	225	22	44	160	16	31
125% (O)	200	22	39	142	14	28

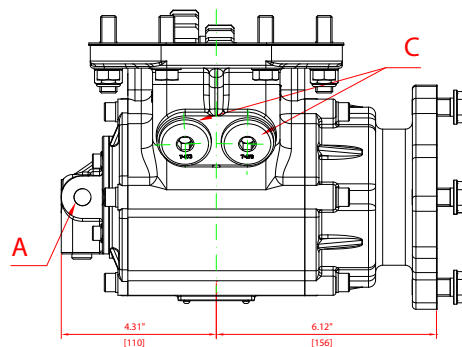
Hot Shift PTO, 8 Bolt, Universal

Bottom, Pneumatic
Inferior, Neumático

SAE "B" 2/4 bolt SAE "B" 2/4 taladros

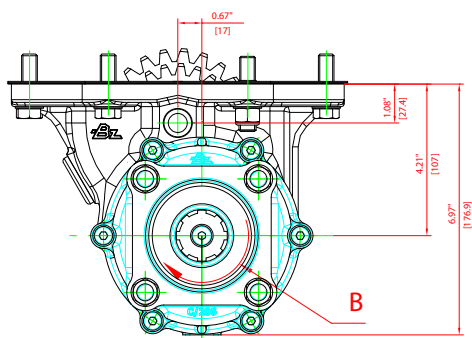


VISTA POR DETRAS
BACK VIEW

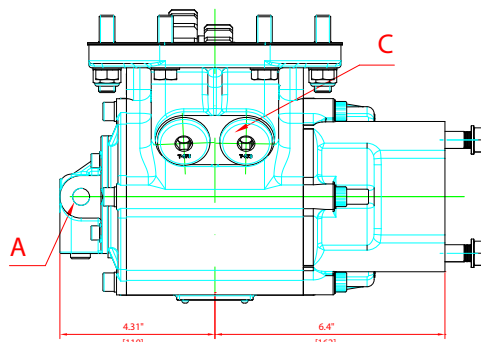


Sentido de marcha
Running way

ISO 4 bolt ISO 4 taladros

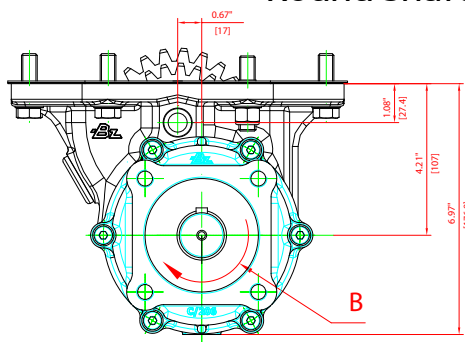


VISTA POR DETRAS
BACK VIEW

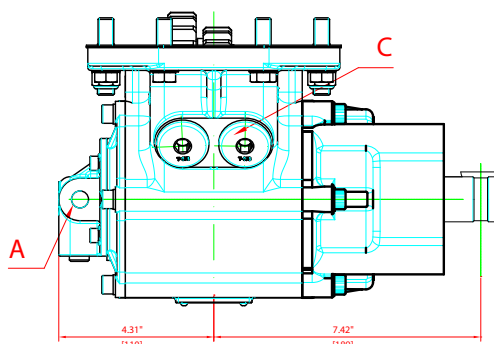


Sentido de marcha
Running way

Round Shaft Eje chaveteado



VISTA POR DETRAS
BACK VIEW



Sentido de marcha
Running way

Notas Notes

- A Air connection BSP 1/4"
- B Rotation
- C Backlash check plug

- A Entrada de aire 1/4" BSP
- B Sentido de giro
- C Comprobación de juego de engranajes

Bottom, Pneumatic Inferior, Neumático

Part Number Breakdown Codificación PTO

3800 X A N 01 1 RA

SERIES:

3800 8 bolt clutch PTO
3810 8 bolt clutch PTO deep mount

VERSIONS:

X Standard

INTERNAL RATIOS:

(A) 1:0.50	(O) 1:1.25
(B) 1:0.55	(R) 1:1.37
(C) 1:0.73	(S) 1:1.50
(E) 1:0.86	(T) 1:1.65
(J) 1:0.95	(Z) 1:0.40

SHIFTER TYPE:

A Air with 101 air kit
N Air without 101 air kit

INPUT GEAR: (Z = 35)

- | | |
|--|---------------------------|
| 01 Fuller series (R/675) | 27 Eaton / Fuller (R/692) |
| 02 Universal (R/683) | 28 Fuller (R/771) |
| 03 Spicer (R/736) | 30 Eaton / Fuller (R/698) |
| 05 Spicer (R/677) | 33 Spicer (R/697) |
| 06 Fuller (TREMEC) (R/679) | 34 Spicer (R/696) |
| 07 Navistar (R/693) | 36 New Process (R/739) |
| 08 Spicer (R/682) | 39 Warner (R/741) |
| 09 Spicer (R/684) | 41 Warner (R/743) |
| 10 Chevy (R/678) | 42 Fuller (R/770) |
| 11 Chevy / Spicer (R/699) | 50 ZF (R/700) |
| 13 New Process (R/718) | 51 Dodge (R/702) |
| 14 Fuller (R/737) | 52 Zed / F (R/700) |
| 15 Eaton / Fuller FS-4005C/4205C (R/717) | 55 Mack / Renault (R/748) |
| 16 ZF (R/716) | 57 ZF (R/740) |
| 17 Eaton 6305 A (R/680) | 61 Ford (R/754) |
| 18 Eaton FS 3005 / 4005 AB (R/717) | 64 Allison (R/752) |
| 20 Dodge (R/701) | 66 Fuller (R/862) |
| 21 ZF 55-42/5.72 (R/676) | 67 Aisin (R/870) |
| 22 Eaton / Fuller (R/738) | 68 Tremec (R/897) |
| 23 Eaton / Fuller FS-3005 B (R/714) | |
| 24 Mack (R/695) | |
| 25 Eaton / Fuller FS 7206 A (R/715) | |

OUTPUT TYPE:

DA ISO 4 bolt
IB Flange SAE 1300
IC Flange SAE 1400
ID Flange DIN 100
RA SAE "B" 2/4 bolt 13T. rotatable
RB SAE "BB" 2/4 bolt 15T. rotatable
SE SAE type 1 1/4 round shaft
SF SAE "A" 2 bolt rotatable

MOUNTING POSITION:

- 1 Right, Forward
- 3 Left, Forward

