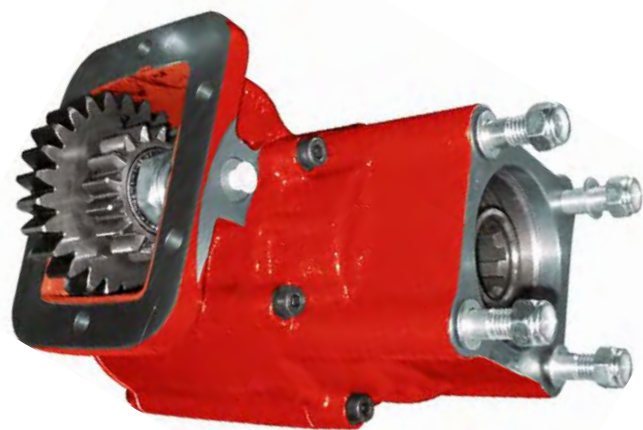


## Hot Shift PTO, 6 Bolt, Universal

Side Mount, Pneumatic  
Lateral, Neumático

## Description Descripción

Hot shift 6 bolt 2 gears pto Pneumatic Mounting on both sides of the Transmission. Several internal ratios. Both possibilities of assembly 1 and 3 in the same housing. All input gears from 1000 / 2000 pto fit on this series.

Toma de fuerza de 6 taladros, 2 piñones con embrague incorporado. Accionamiento neumático. Montaje sobre ambos lados de la caja de cambios. Diferentes relaciones de transmisión. Mismos engranajes de ataque que la serie 1000/2000 cubriendo la mayoría de cajas de cambio del mercado.

Main Data		Datos Principales	
Mounting position	Lado de montaje	Right, Left	Derecho, Izquierdo
Pump rotation	Sentido de giro de la bomba	Left	Izquierdo
Weight	Peso (Lb)	44	
Engine to PTO ratio	Relación motor - Toma de Fuerza	See application book	Consultar libro de aplicaciones

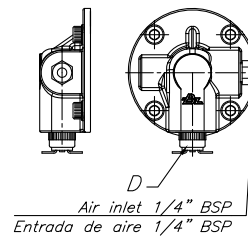
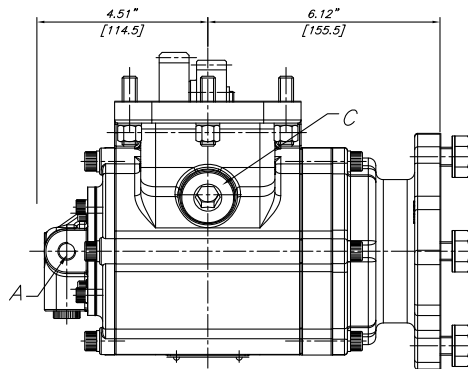
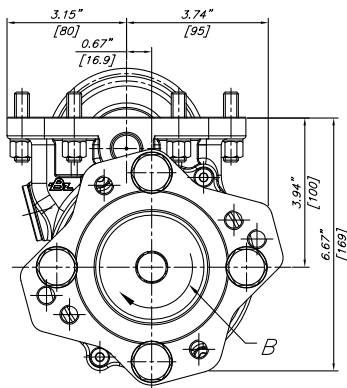
Torque working, with an engage pressure of 116 PSI or higher  
Par nominal trabajando con presión de accionamiento de 8 bar

INTERNAL RATIO	INTERMITTENT SERVICE			CONTINUOUS SERVICE		
	Torque (Lb. FT)	Power (HP)		Torque (Lb. FT)	Power (HP)	
		At 500 r.p.m.	At. 1000 r.p.m.		At 500 r.p.m.	At. 1000 r.p.m.
40% (Z)	250	25	49	178	18	35
50% (A)	250	25	49	178	18	35
55% (B)	250	25	49	178	18	35
73% (C)	250	25	49	178	18	35
86% (E)	225	22	44	160	16	31
95% (J)	225	22	44	160	16	31
125% (O)	200	22	39	142	14	28

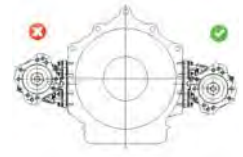
Side Mount, Pneumatic  
Lateral, Neumático

Most standard output types Tipos de salida más utilizadas

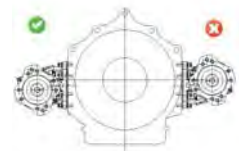
SAE "B" 2/4 bolt SAE "B" 2/4 taladros



Position 1 Position 1

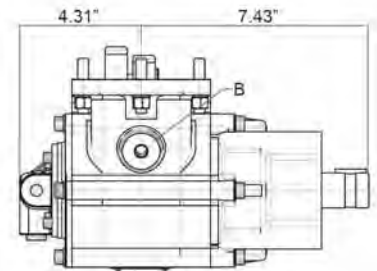
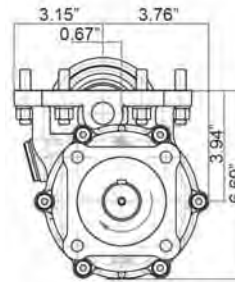
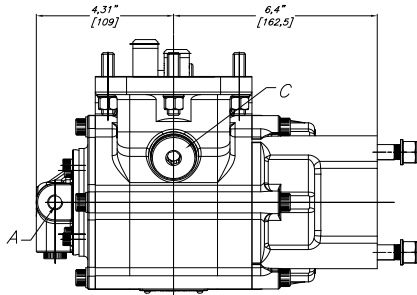
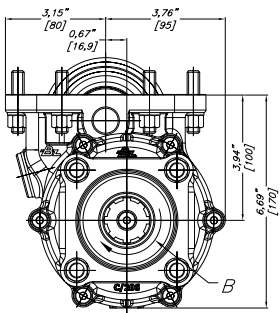


Position 3 Position 3



ISO 4 bolt ISO 4 taladros

Round shaft Eje chaveteado



Notas Notes

- A Air connection BSP 1/4"
- B Rotation
- C Backlash check plug
- D Pressure switch

- A Entrada de aire 1/4" BSP
- B Sentido de giro
- C Comprobación de juego de engranajes
- D Presostato

# Hot Shift PTO, 6 Bolt, Universal

## Side Mount, Pneumatic Lateral, Neumático

### Part Number Breakdown Codificación PTO

3200 X A N 01 1 RA

**SERIES:**

3200 6 bolt clutch PTO

**VERSIONS:**

X Standard  
P Greasable Idler shaft

**INTERNAL RATIOS:**

(B) 1:0.55 (R) 1:1.37  
(C) 1:0.73 (S) 1:1.50  
(E) 1:0.80 (T) 1:1.65  
(J) 1:0.95 (Z) 1:0.40  
(O) 1:1.25

**SHIFTER TYPE:**

A Air with 101 air kit  
N Air without 101 air kit  
S Air with 126 air kit  
T Air with 127 air kit  
U Air kit with 128 air kit  
P Electric over air, 12V

**INPUT GEAR:**

- |  |                           |
|--|---------------------------|
| 01 Fuller series (R/675)                 | 27 Eaton / Fuller (R/692) |
| 02 Universal (R/683))                    | 28 Fuller (R/771)         |
| 03 Spicer (R/736)                        | 30 Eaton / Fuller (R/698) |
| 05 Spicer (R/677)                        | 33 Spicer (R/697)         |
| 06 Fuller (TREMEC) (R/679)               | 34 Spicer (R/696)         |
| 07 Navistar (R/693)                      | 36 New Process (R/739)    |
| 08 Spicer (R/682)                        | 39 Warner (R/741)         |
| 09 Spicer (R/684)                        | 41 Warner (R/743)         |
| 10 Chevy (R/678)                         | 42 Fuller (R/770)         |
| 11 Chevy / Spicer (R/699)                | 50 ZF (R/700)             |
| 13 New Process (R/718)                   | 51 Dodge (R/702)          |
| 14 Fuller (R/737)                        | 52 Zed / F (R/700)        |
| 15 Eaton / Fuller FS-4005C/4205C (R/717) | 55 Mack / Renault (R/748) |
| 16 ZF (R/716)                            | 57 ZF (R/740)             |
| 17 Eaton 6305 A (R/680)                  | 61 Ford (R/754)           |
| 18 Eaton FS 3005 / 4005 AB (R/717)       | 66 Fuller (R/862)         |
| 20 Dodge (R/701)                         | 68 Tremec (R/897)         |
| 21 ZF S5-42/5.72 (R/676)                 |                           |
| 22 Eaton / Fuller (R/738)                |                           |
| 23 Eaton / Fuller FS-3005 B (R/714)      |                           |
| 24 Mack (R/695)                          |                           |
| 25 Eaton / Fuller FS 7206 A (R/715)      |                           |

**OUTPUT TYPE:**

DA ISO 4 bolt  
FA Flange SAE 1100  
IB Flange SAE 1300  
IC Flange DIN 100  
RA SAE "B" 2/4 bolt 13T. rotatable  
RB SAE "BB" 2/4 bolt 15T. rotatable  
SE SAE type 1 ¼ round shaft  
SG SAE type 1 ½ round shaft

**MOUNTING POSITION:**

- 1 Right, Forward
- 3 Left, Forward

