



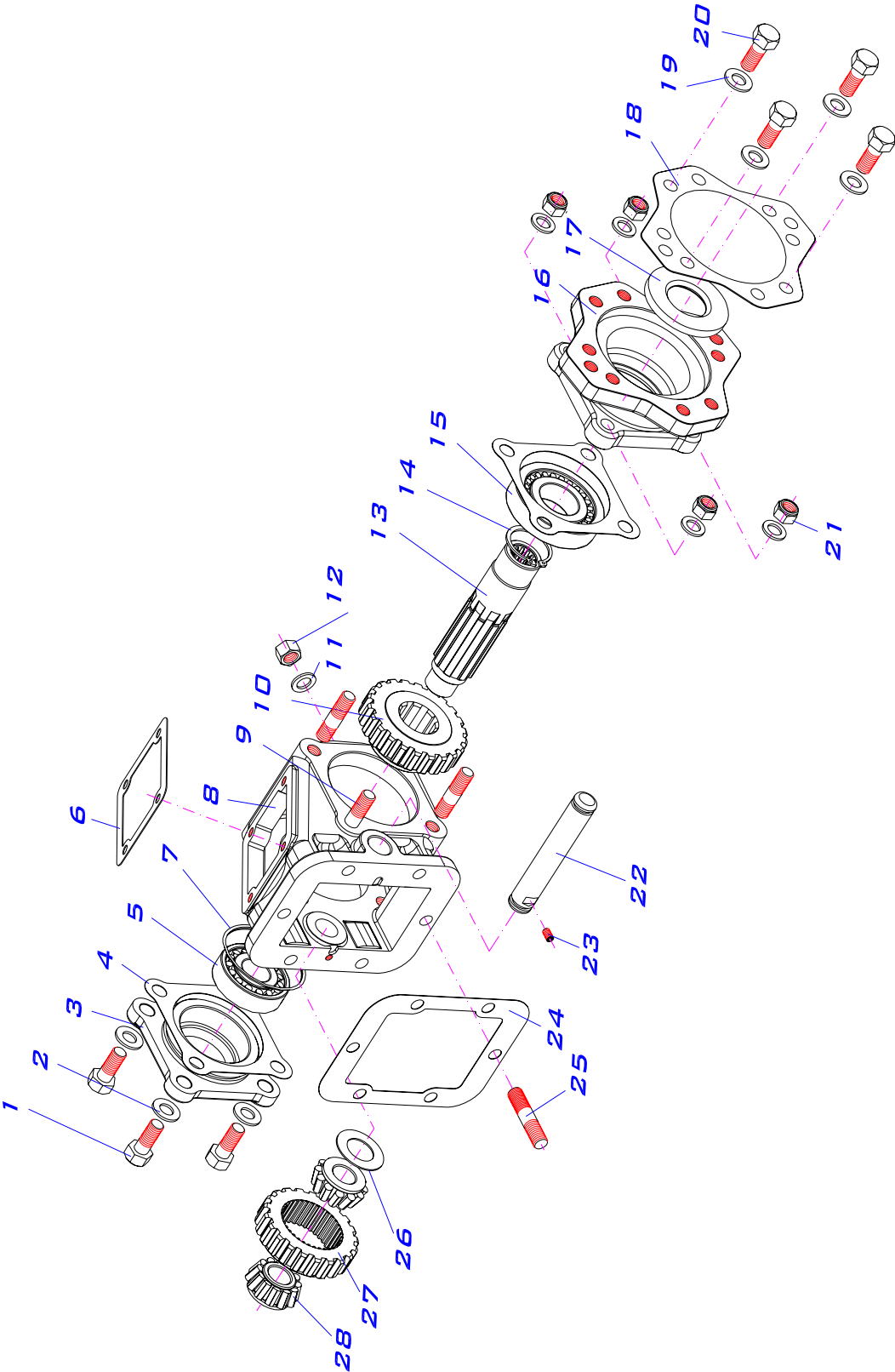
KITS

PART LIST



POWER TAKE OFF 1000 & 1010 SERIES

Oct. 2007



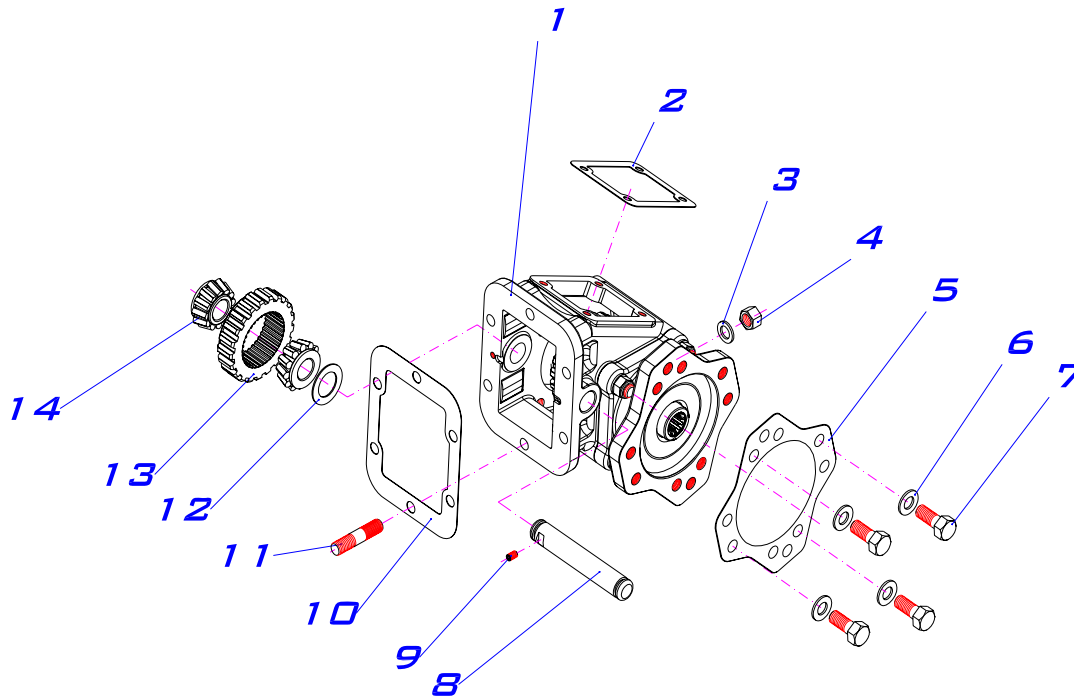
POWER TAKE OFF 1000 & 1010 SERIES

Oct. 2007

Preassembled kit power take off (1000 & 1010 Series)

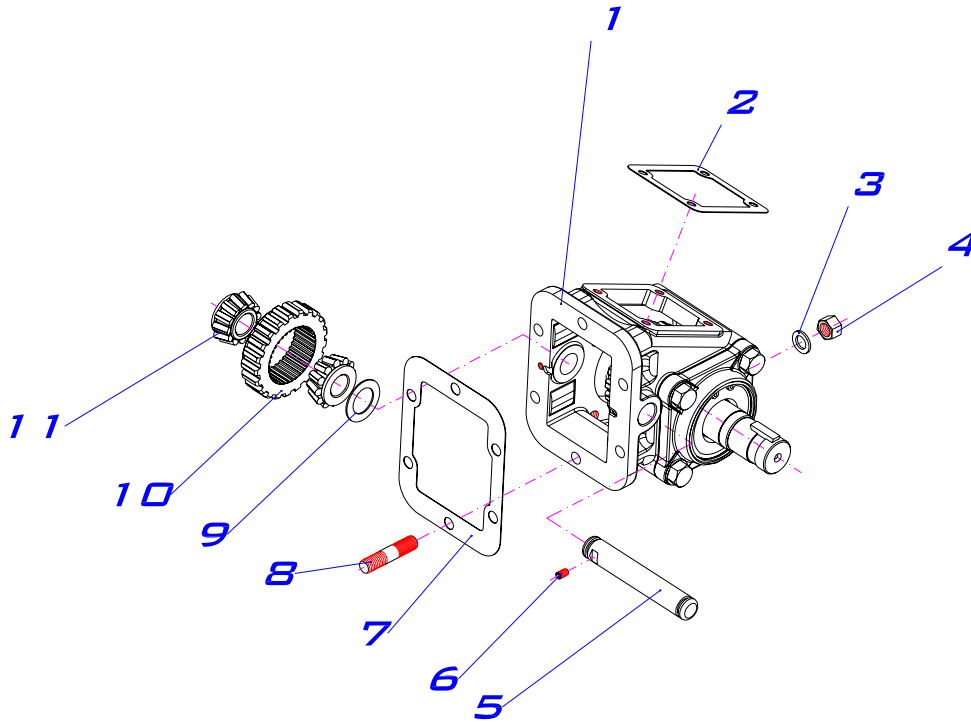
ITEM	QT.	DESCRIPTION	DIMENS.	REFER.	CODE.
1	4	Screw DIN 933 8.8	M12 x 25		116030011
2	8	Washer DIN 125	12.5 x 20 x 2		102090009
3	1	Seal carrier blank cover		T/093	208010931
4	*	Gasket .019	0.5 mm	A/547	108010038
	*	Gasket .010	0.3 mm	A/547-1	108010098
5	1	Taper roller bearing 30305 A	25 x 62 x 18.25		113300003
6	1	Gasket piston		A/348	108010022
7	1	O-ring	75 x 2.5		107010093
8	1	Universal housing 6 hole for 1000 series		C/042	202110421
	1	Universal housing 6 hole for 1010 series		C/042-1	202110422
9	4	Stud L=49 mm	M12 - 175 (14 / 21)		117020096
10	1	Bottom gear		Several	According to ratio
11	6	Washer DIN 125	10.5 x 16.8 x 2		102090010
12	6	Special nut	M10 - 100		119010001
13	1	Output shaft to pump SAE" B"		Several	Option
14	1	Circlip DIN 471	Ø 35		101010005
15	1	Taper roller bearing 30307 A	35 x 80 x 22.75		113300004
16	1	Adapter housing SAE "B"		C/091	202120911
17	1	Seal BA SL	35 x 72 x 10		112010007
18	1	Gasket SAE "B"		J/004	108010091
19	4	Washer DIN 125	Ø 13		102010002
20	4	Screw DIN 931	½" UNC x 32		116020025
21	4	Nut DIN 985	M12 - 175		119020003
22	1	Idler shaft standard		E/253	203042531
23	1	Stud DIN 913 for 1000 series	M6 x 10		117010006
	1	Stud DIN 913 for 1010series	M6 x 6		117010008
24	*	Gasket 6 hole .019	0.5 mm	A/202	108010004
	*	Gasket 6 hole .010	0.3 mm	A/202-2	108010102
	*	Gasket 6 hole .040	1 mm	A/202-3	108010103
25	6	Stud L=50 mm. for 1000 series	M10 x 25/3/8" x 17		117020094
	6	Stud L=45 mm. for 1010 series	M10 x 25/3/8" x 17		117020003
26	1	Axial disc AS 2035.	20x35x1		114010008
27	1	Upper gear		Several	According to ratio
28	2	Taper roller bearing 32304 A	20 x 52 x 22.5		113300023

Preassembled kit PTO (1000 & 1010 Series) SAE B 2/4 bolt



ITEM	QT.	DESCRIPTION	DIMENS.	REFER.	CODE
1	1	Preassembled PTO		*	According order.
2	1	Gasket.		A/348	108010022
3	6	Washer DIN 125	10.5 x 16.8 x 2		102090010
4	6	Special Nut	M10 - 100		119010001
5	1	Gasket SAE "B"		J/004	108010091
6	4	Washer DIN 125	Ø 13		102010002
7	4	Screw DIN 931	½" UNC x 32		116020025
8	1	Standard Pin		E/253	203042531
9	1	Stud DIN 913 for 1000 Series.	M6 x 10		117020006
	1	Stud DIN 913 for 1010 Series.	M6 x 6		117010008
10	*	Gasket 6 bolt.019	0.5 mm	A/202	108010004
	*	Gasket 6 bolt .010	0.3 mm	A/202-2	108010102
	*	Gasket 6 bolt.040	1 mm	A/202-3	108010103
11	6	Stud L=50 mm. for 1000 Series.	M10 x 25/3/8" x 17		117020094
	6	Stud L=45 mm. for 1010 Series.	M10 x 25/3/8" x 17		117020003
12	1	Axial AS 2035.	20x35x1		114010008
13	1	Upper gear		Several.	According ratio.
14	2	Taper roller bearing 32304 A	20 x 52 x 22.5		113300023

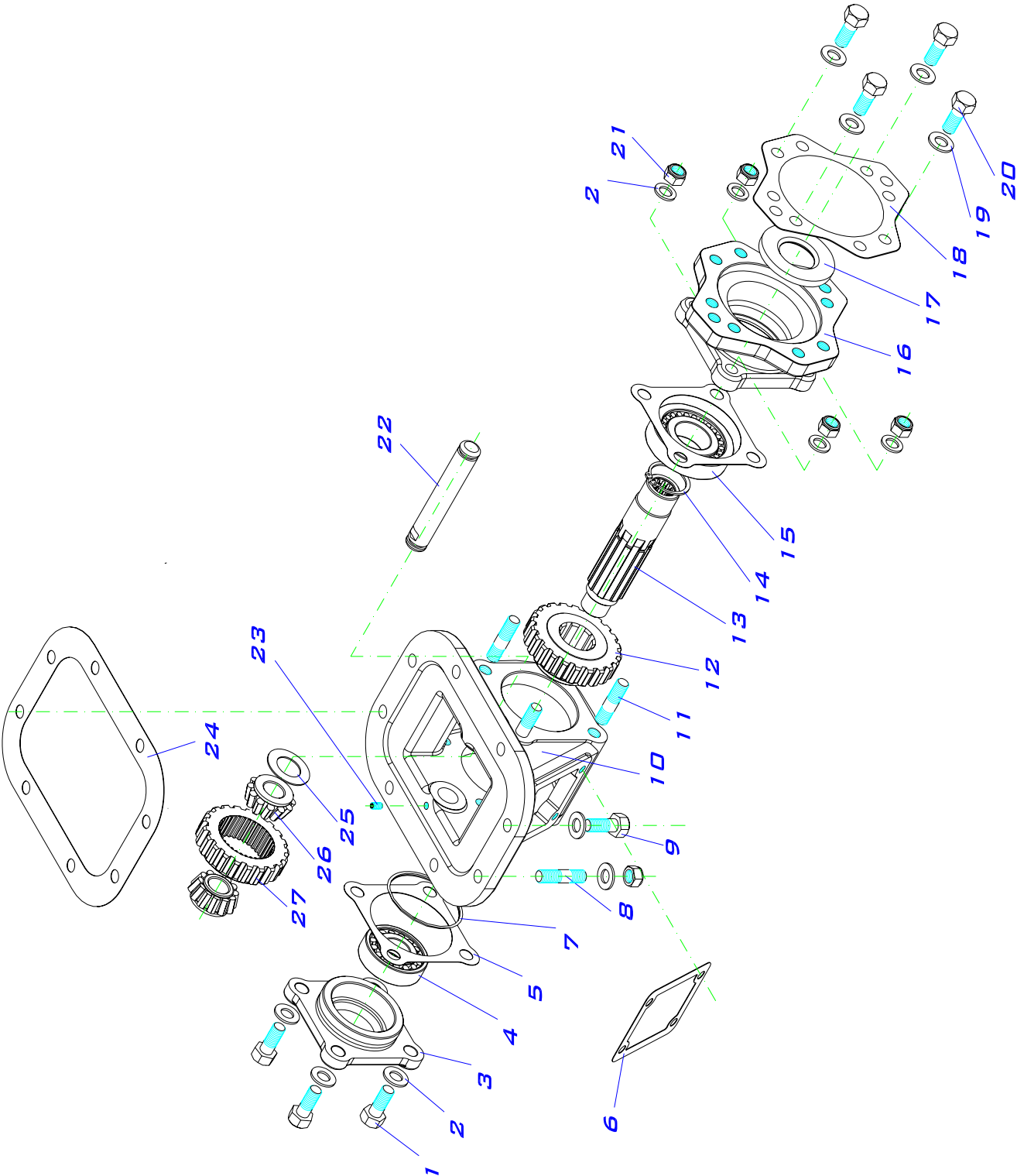
Preassembled kit PTO (1000 & 1010 Series) ROUND SHAFT.



ITEM	QT.	DESCRIPTION	DIMENS.	REFER.	CODE
1	1	Preassembled PTO.		*	According order.
2	1	Gasket.		A/348	108010022
3	6	Washer DIN 125	10.5 x 16.8 x 2		102090010
4	6	Special Nut.	M10 - 100		119010001
5	1	Standard Pin		E/253	203042531
6	1	Stud DIN 913 for 1000 Series.	M6 x 10		117020006
	1	Stud DIN 913 for 1010 Series.	M6 x 6		117010008
7	*	Gasket 6 bolt.019	0.5 mm	A/202	108010004
	*	Gasket 6 bolt.010	0.3 mm	A/202-2	108010102
	*	Gasket 6 bolt.040	1 mm	A/202-3	108010103
8	6	Stud L=50 mm. Para Serie 1000	M10 x 25//3/8" x 17		117020094
	6	Stud L=45 mm. Para Serie 1010	M10 x 25//3/8" x 17		117020003
9	1	Axial disc AS 2035	20x35x1		114010008
10	1	Upper Gear.		Several.	According internal ratio.
11	2	Taper roller bearing 32304 A	20 x 52 x 22.5		113300023

POWER TAKE OFF 2000 & 2010 SERIES

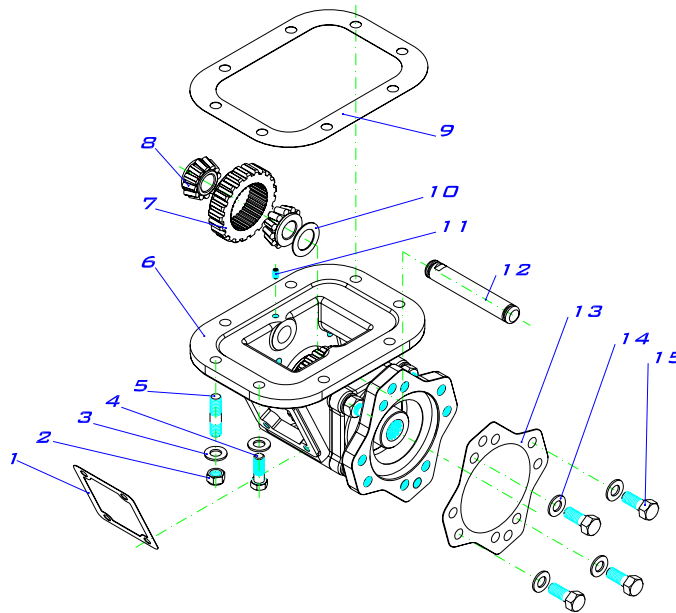
Oct. 2007



Preassembled kit power take off (2000 & 2010 Series)

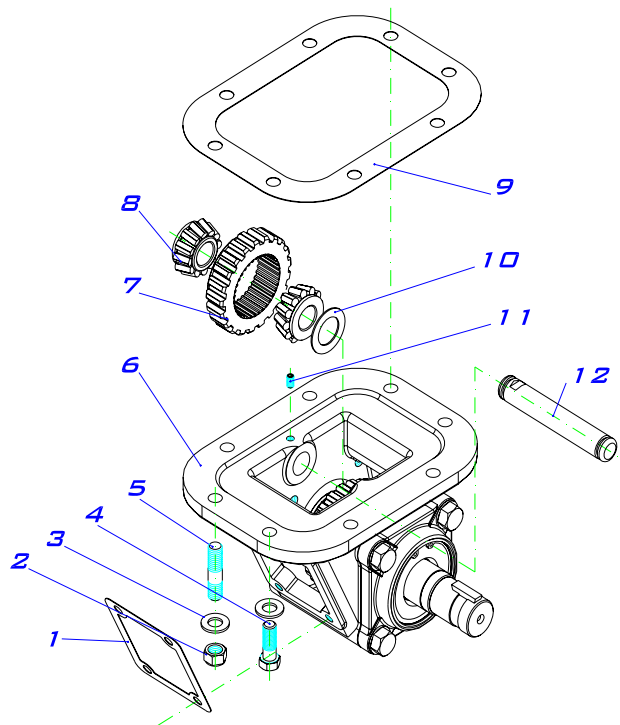
ITEM	QT.	DESCRIPTION	DIMENS.	REFER.	CODE.
1	4	Screw DIN 933 8.8	M12 x 25		116030011
2	16	Washer DIN 125	12.5 x 20 x 2		102090009
3	1	Seal carrier blank cover		T/093	208010931
4	1	Taper roller bearing 30305 A	25 x 62 x 18.25		113300003
5	*	Gasket .019	0.5 mm	A/547	108010038
	*	Gasket .010	0.3 mm	A/547-1	108010098
6	1	Gaske world false piston		A/348	108010022
7	1	O-ring	Ø75 x 2.5		107010093
8	2	Stud L= 53 mm	M12 - 1.75 x25 / 7/16" UNC x 17		116020043
9	6	Screw DIN 931 12.9, PTO 2000 series.	7/16" UNC x 35		116020020
		Screw DIN 931 12.9, PTO 2010 series	7/16" UNC x 32		116020029
10	1	Universal housing 8 hole 2000		C/011	202110111
	1	Universal housing 8 hole 2010		C/011-1	202110112
11	4	Stud L=49	M12-175 (14-21)		117020096
12	1	Bottom gear		Several	According to ratio
13	1	Output shaft to pump SAE B		Several	Option
14	1	Circlip DIN 471	Ø 35		101010005
15	1	Taper roller bearing 30307 A	35 x 80 x 22.75		113300004
16	1	Adapter housing SAE "B"		C/091	202120911
17	1	Seal BA SL	35 x 72 x 10		112010007
18	1	Gasket SAE "B"		J/004	108010091
19	4	Washer DIN 125	Ø 13		102010002
20	4	Screw DIN 931	½" UNC x 32		116020025
21	6	Special hexagon nut	M12		119020003
22	1	Idler shaft standard		E/253	203042531
23	1	Stud DIN 914 2000	M6x14		117030002
	1	Stud DIN 913 2010	M6x12		117010009
24	*	Gasket 8 hole .	0.5 mm	A/175	108010003
	*	Gasket 8 hole	0.3 mm	A/175-1	108010098
	*	Gasket 8 hole	1 mm	A/175-2	108010100
25	1	Axial disc AS 2035.	20x35x1		114010008
26	2	Taper roller bearing 32304 A	20 x 52 x 22.5		113300023
27	1	Upper gear		Several	According to ratio

Preassembled kit PTO (2000 & 2010 Series) SAE B 2/4 bolt



ITEM	QT.	DESCRIPTION.	DIMENS.	REFER.	CODE.
1	1	Gasket .		A/348	108010022
2	2	Special hexagon nut	M12		119020003
3	8	Washer DIN 125	12.5 x 20 x 2		102090009
4	6	Screw DIN 931 12.9, PTO 2000 series.	7/16" UNC x 35		116020020
		Screw DIN 931 12.9, PTO 2010 series	7/16" UNC x 32		116020029
5	2	Stud L= 53 mm	M12 - 1.75 x25 / 7/16" UNC x 17		116020043
6	1	Preassembled PTO.		*	According order
7	1	Upper gear.		Several.	According internal ratio.
8	2	Rodamiento de Rodillo cónicos 32304 A	20 x 52 x 22.5		113300023
9	*	Gasket 8 Bolt.	0.5 mm	A/175	108010003
	*	Gasket 8 Bolt.	0.3 mm	A/175-1	108010099
	*	Gasket 8 Bolt.	1 mm	A/175-2	108010100
10	1	Axial disc AS 2025.	20x35x1		114010008
11	1	Stud DIN 914 2000	M6x14		117030002
	1	Stud DIN 913 2010	M6x12		117020009
12	1	Standard Pin.		E/253	203042531
13	1	Gasket SAE "B"		J/004	108010091
14	4	Washer DIN 125.	Ø 13		102010002
15	4	Screw DIN 931.	½" UNC x 32		116020025

Preassembled kit PTO (2000 & 2010 Series) ROUND SHAFT



ITEM	QT.	DESCRIPTION.	DIMENS.	REFER.	CODE
1	1	Gasket.		A/348	108010022
2	2	Special hexagon nut	M12		119020003
3	8	Washer DIN 125	12.5 x 20 x 2		102090009
4	6	Screw DIN 931 12.9, PTO 2000 series.	7/16" UNC x 35		116020020
		Screw DIN 931 12.9, PTO 2010 series.	7/16" UNC x 32		116020029
5	2	Stud L= 53 mm	M12 - 1.75 x25 / 7/16" UNC x 17		116020043
6	1	Preassembled PTO.		*	According order .
7	1	Upper gear.		Several.	According internal ratio.
8	2	Taper roller bearing 32304 A	20 x 52 x 22.5		113300023
9	*	Gasket 8 bolt.	0.5 mm	A/175	108010003
	*	Gasket 8 bolt.	0.3 mm	A/175-1	108010099
	*	Gasket 8 bolt.	1 mm	A/175-2	108010100
10	1	Axial disc AS 2035.	20x35x1		114010008
11	1	Stud DIN 914 2000	M6x14		117030002
	1	Stud DIN 913 2010	M6x12		117020009
12	1	Standard Pin		E/253	203042531

PTO USA CODING (PREASSEMBLED)

1000

X

C

KIT

1

DA

*

1000.- Standard mounting, 6 bolt
 1010.- Deep mounting, 6 bolt
 2000.- Standard mounting, 8 bolt
 2010.- Deep mounting, 8 bolt
 3000.- Allison PTO'S, 6 bolt
 3100.- Allison PTO'S, 10 bolts

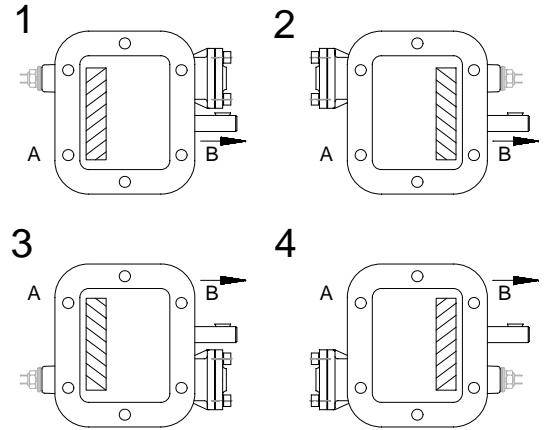
X.- STANDARD
 G.- GREASEABLE OUTPUT SHAFT.
 P.- OIL PRESSURE LUBE IDLER SHAFT

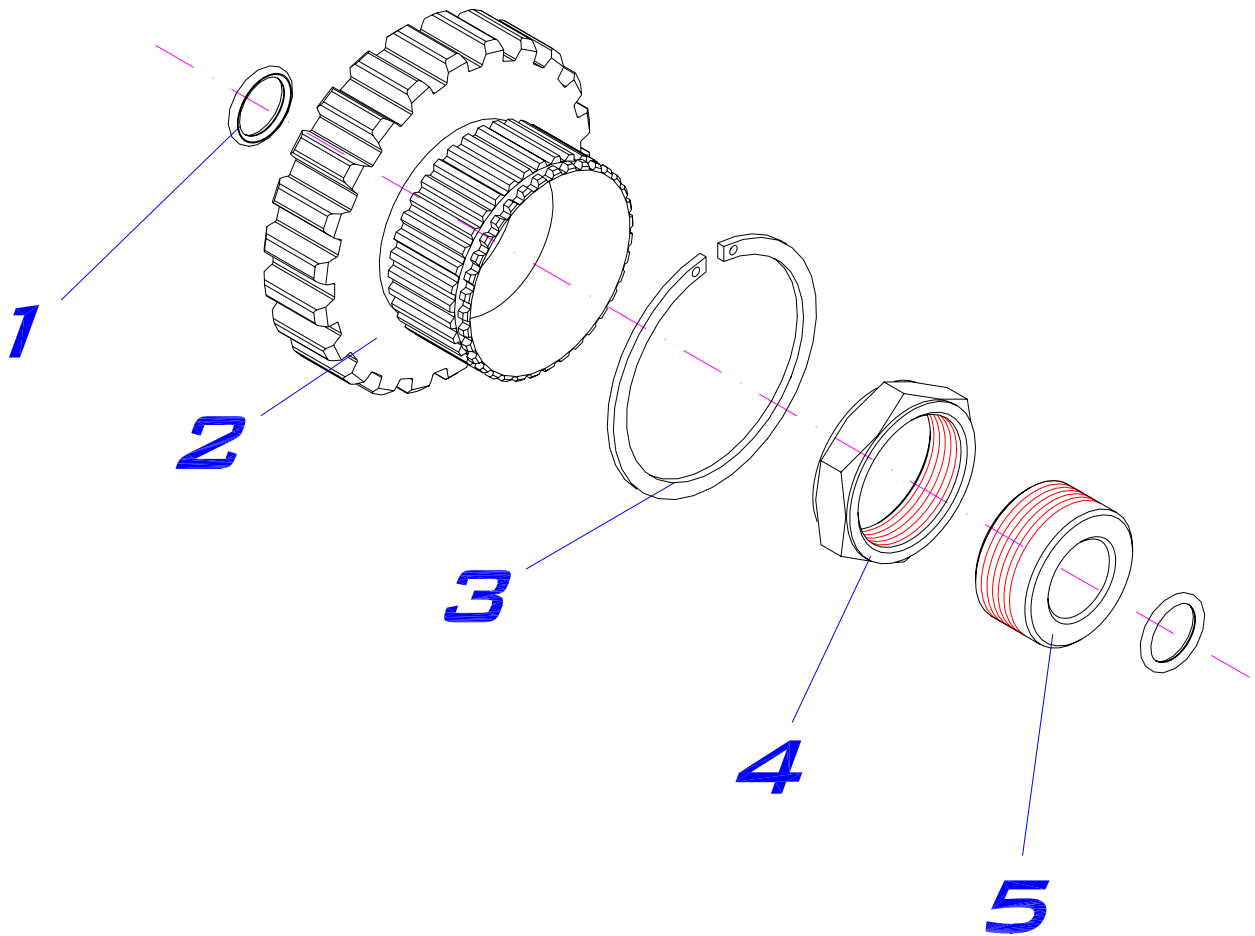
RATIO:
 1:0.73 (C) => **800534**
 1:0.8 (E) => **800634**
 1:0.95 (J) => **800734**
 1:1.25 (O) => **800834**
 1:1.37 (R) => **801334**
 1:1.50 (S) => **801434**
 1:1.65 (T) => **800934**

**PREASSEMBLED PTO
 KIT**

OUTPUT TYPE:
 DA = DIN
 DB=
 DC=
 IA = ISO 4 TALADROS
 IB=
 IC=
 SA= SAE "B" 2/4 BOLT 13T
 SB= SAE "B" 2/4 BOLT 15T
 SH= SAE "B" 7/8 ROUND SHAFT
 SD= SAE TYPE "B" 2 BOLT
 SE= SAE TYPE 1 1/4" ROUND SHAFT.
 RA= SAE "B" 2/4 BOLT 13T. ROTATABLE

MOUNTING POSITION:
 1.- GEAR SIDE A. PISTON TO RIGHT HAND
 2.- GEAR SIDE B. PISTON TO RIGHT HAND
 3.- GEAR SIDE A. PISTON TO LEFT HAND
 4.- GEAR SIDE B. PISTON TO LEFT HAND

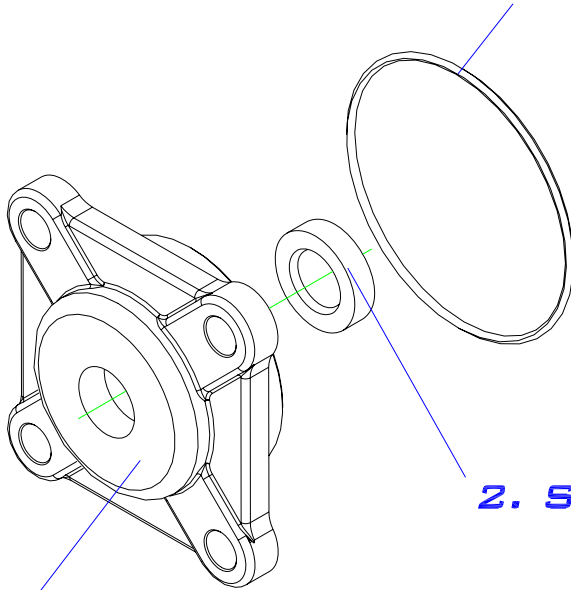




Preassembled kit input gear

ITEM	QT.	DESCRIPTION	DIMENS.	REFER.	CODE
1	2	O-RING	15x2,5		107010022
2	1	INPUT GEAR		VARIOS	ACCORDING TO GEARBOX
3	1	ELASTING RING WRE	DIAM. 55		101100001
4	1	ADJUSTING NUT		A/485	200014851
5	1	ADJUSTING BUSH		A/484	200014841

3. O-RING (107010093)

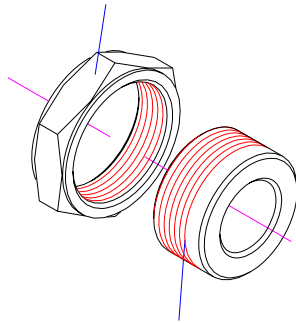


2. SEAL (112090004)

1. END CAP (208011871)

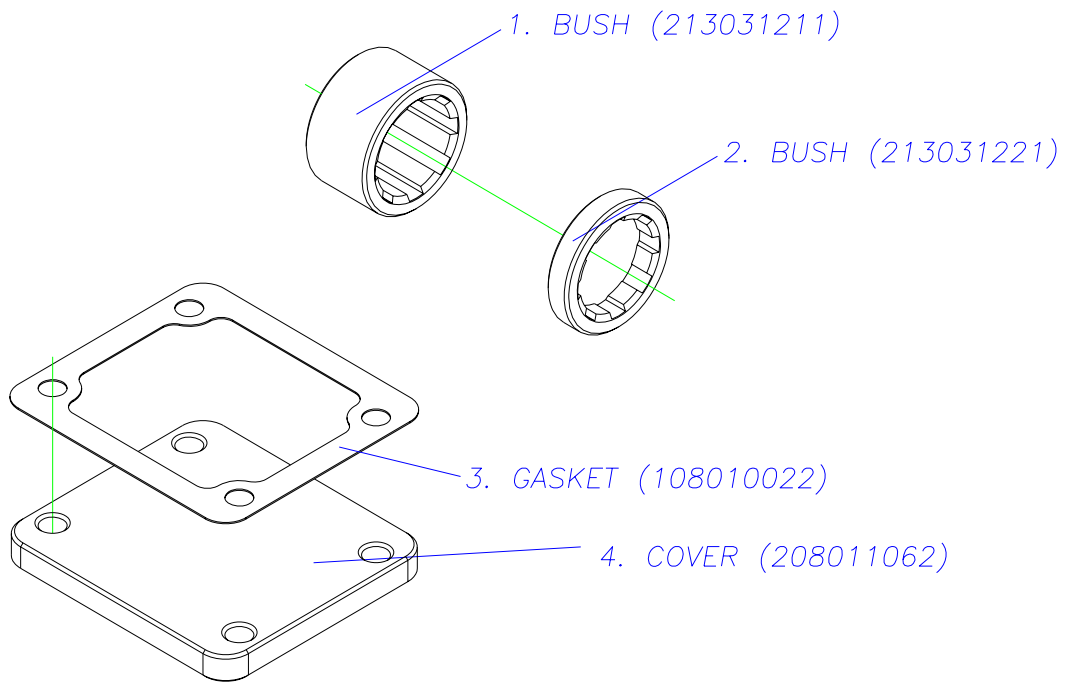
DESCRIPTION	CODE	PTO 1000 & 2000 SERIES GREASABLE SHAFT
END COVER GREASABLE SHAFT KIT	709304	

UNIVERSAL ADJUSTING NUT (200014851)

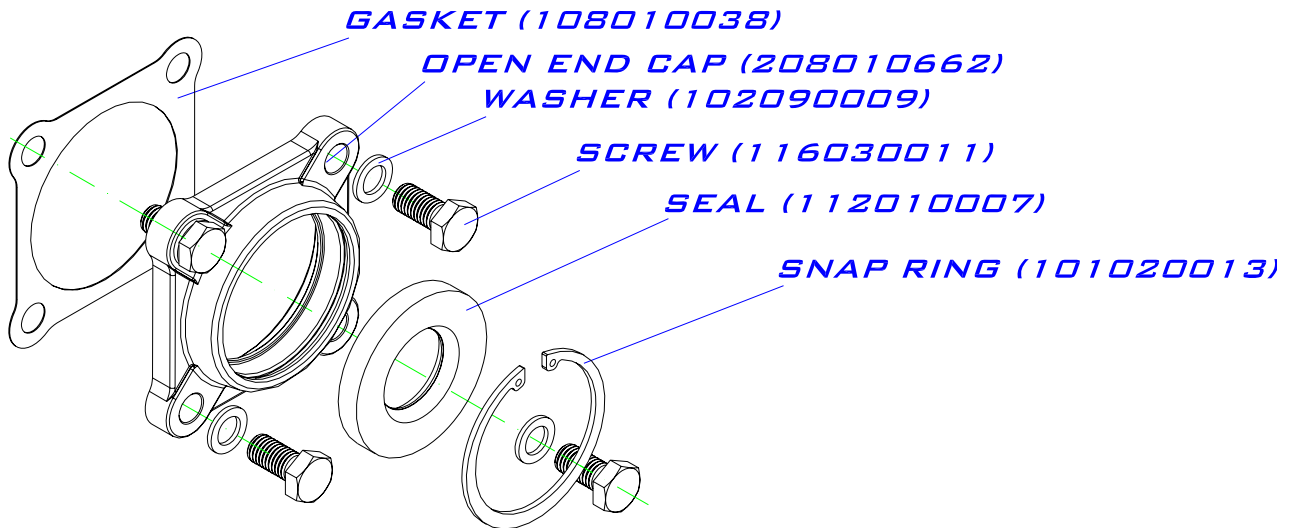


UNIVERSAL ADJUSTING BUSH (200014841)

DESCRIPTION	CODE	PTO 1000 & 2000 SERIES UPPER SHAFT ADJUSTING
UPPER SHAFT ADJUSTING KIT	9013299	



DESCRIPTION	CODE	PTO 1000 & 2000 SERIES CONSTANT MESH
CONSTANT MESH KIT	9013399	

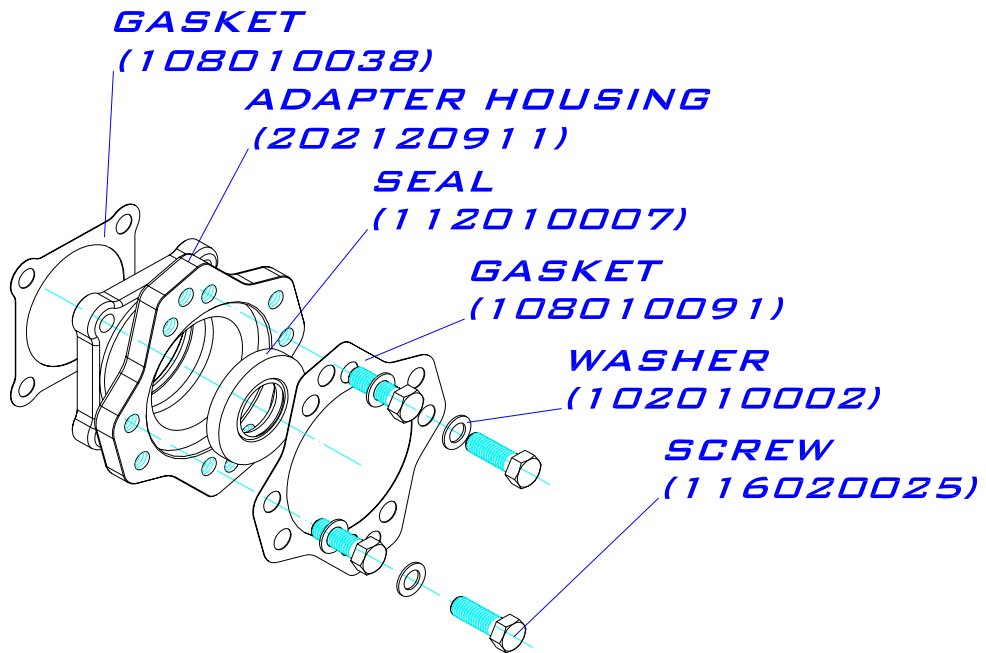
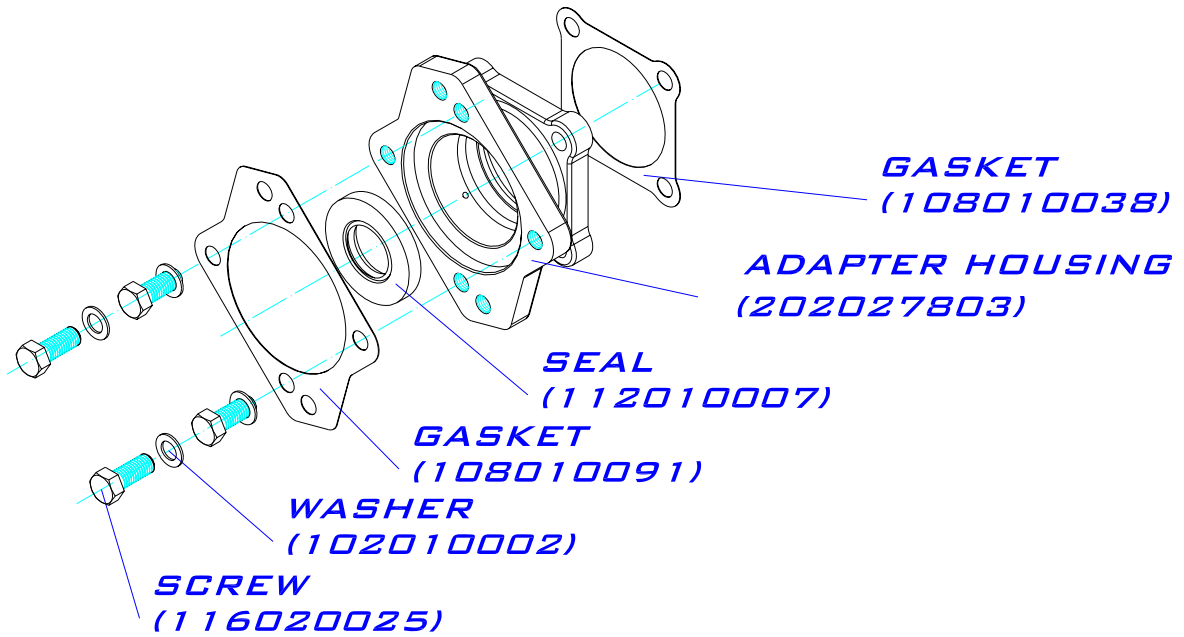


DESCRIPTION	CODE	PTO 1000 & 2000 SERIES OUTPUT SHAFT
OPEN END CAP KIT	709104	

KITS

(SAE "B" 2/4 BOLT)

April 2.003



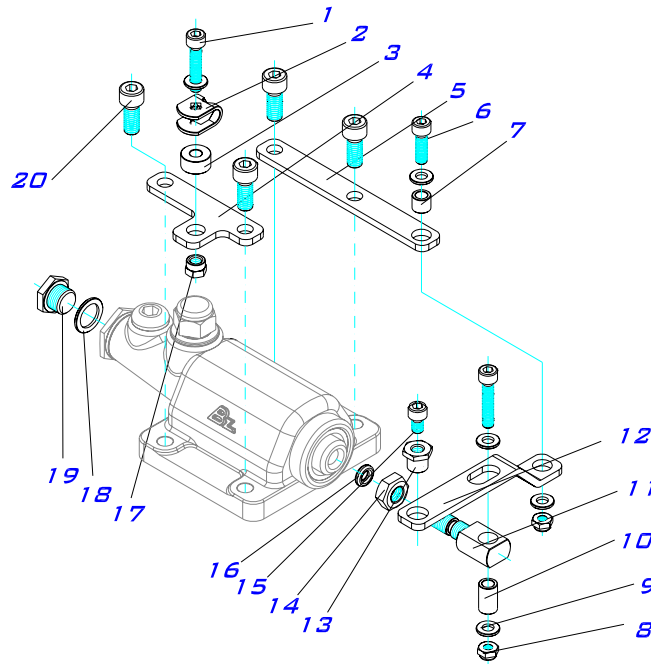
DESCRIPTION	CODE	
2/4 BOLT FLANGE KIT (SA)	709204	PTO 1000 & 2000 SERIES SAE "B" 2/4 BOLT
2/4 BOLT FLANGE KIT (RA)	709904	



KITS

(WIRE SHIFT. PTO'S 1000 & 2000)

July 2.002



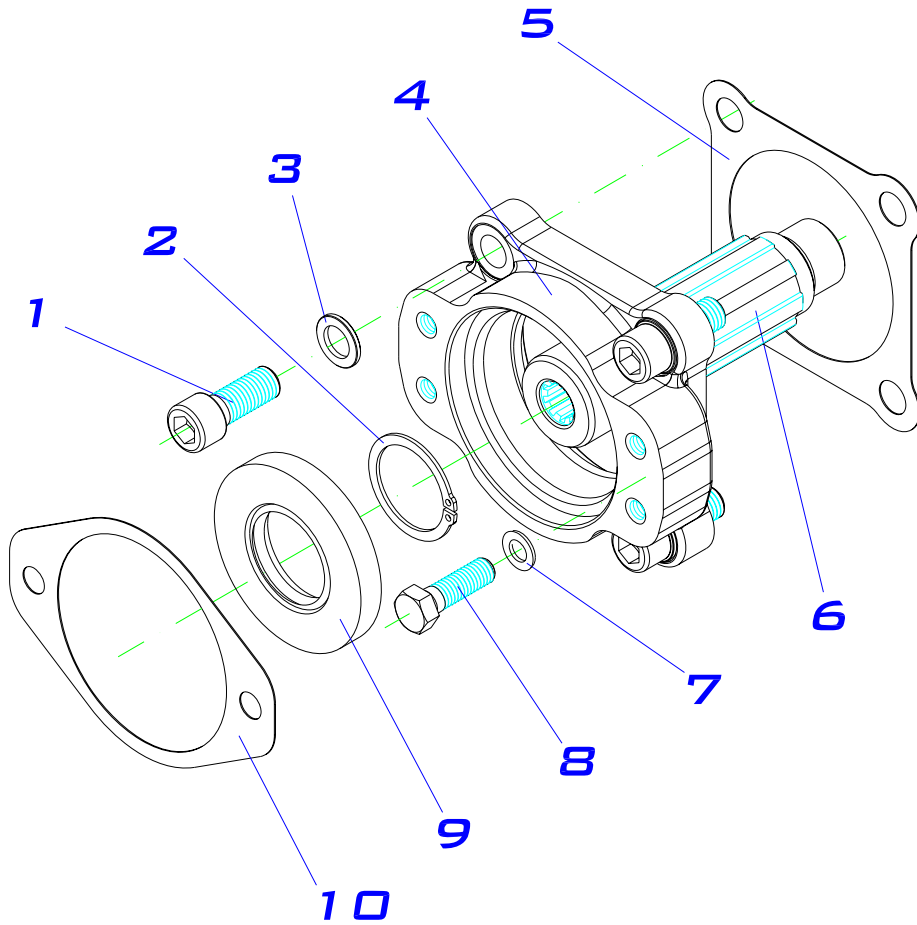
DESCRIPTION	CODE	PTO 1000 & 2000 SERIES
WIRE SHIFT	9013799	

ITEM	QT.	DESCRIPTION	DIMENS.	CODE	PTO CODE
1	1	Screw DIN 912 8.8, allen head	M6 x 30	116010004	
2	1	Cable clip		200101471	
3	1	Bush	8 mm.	209110761	
4	1	Cable bracket		200101331	
5	1	Lever bracket		200101321	
6	1	Screw DIN 912 8.8, allen head	M6 x 20	116010003	
7	1	Bush	8.5 mm.	209110601	
8	2	Nut DIN 985, autoblock	M6	119020008	
9	5	Washer DIN 9021	Ø6	102010003	
10	1	Bush	16.5 mm.	209110611	
11	1	Rod spacer		212120131	
12	1	Lever		200101341	
13	1	Clamping nut cable		214111491	
14	1	Nut DIN 934 8.8	M10	119070004	
15	1	O-ring	8 x 2.5	107010122	
16	1	Screw DIN 912 8.8, allen head	M6 x 10	116010099	
17	4	Screw DIN 912 8.8 sealed	M8x25	116010009	
18	1	Cable clip nut		214111481	
19	1	Coopper washer	14 x 20	102060016	
20	1	Hexagonal plug	M14-150	118020025	

KITS

(SAE "A" 2 BOLT Z=9)

July 2.008



PTO 2000 SERIES

DESCRIPTION	CODE	PTO 1000 & 2000 SERIES SAE "A" 2 BOLT
CONVERSION KIT TO SAE "A" 2 BOLT Z=9	800835	

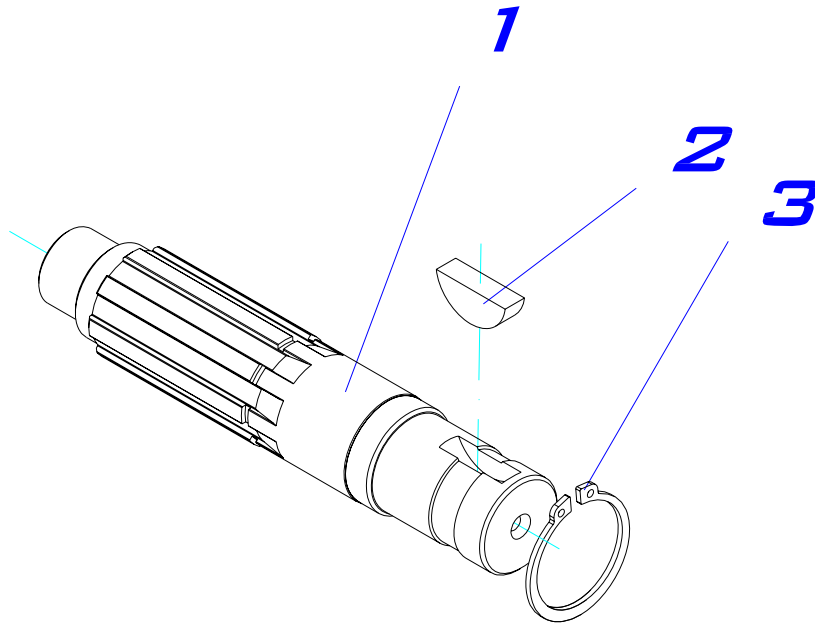
ITEM	QT.	DESCRIPTION	DIMENS.	CODE	BZ USA CODE.
1	4	Screw DIN 912 8.8 sealed	M12 x 30	116010030	
2	1	Snap ring DIN 471	Ø 35	101010005	
3	4	Washer DIN 125	12.5 x 20 x 2	102090009	
4	1	Housing flange, open end		202130451	
5	1	Gasket		108010038	
6	1	Output shaft, mount pump Z=9		203024071	
		Output shaft, mount pump Z=11 (Optional.)		203025511	
		Output shaft, mount pump Z=13 (Optional.)		203025491	
7	2	Washer AET	Ø 10	102010003	
8	2	Screw DIN 931, hex head	3/8" UNC x 32	116020035	
9	1	Oil seal BA SL	35 x 72 x 10	112010007	
10	1	Gasket 2 bolt		108010113	



KITS

OUTPUT SHAFT KIT KEY $\phi 1\frac{1}{4}$ ", $\phi 7/8$ "

Sept. 2.008



DESCRIPTION	CODE	PTO 1000 & 2000 SERIES
<i>OUTPUT SHAFT KIT KEY $\phi 1\frac{1}{4}$"</i>	<i>800235</i>	
<i>OUTPUT SHAFT KIT KEY $\phi 7/8$"</i>	<i>800135</i>	

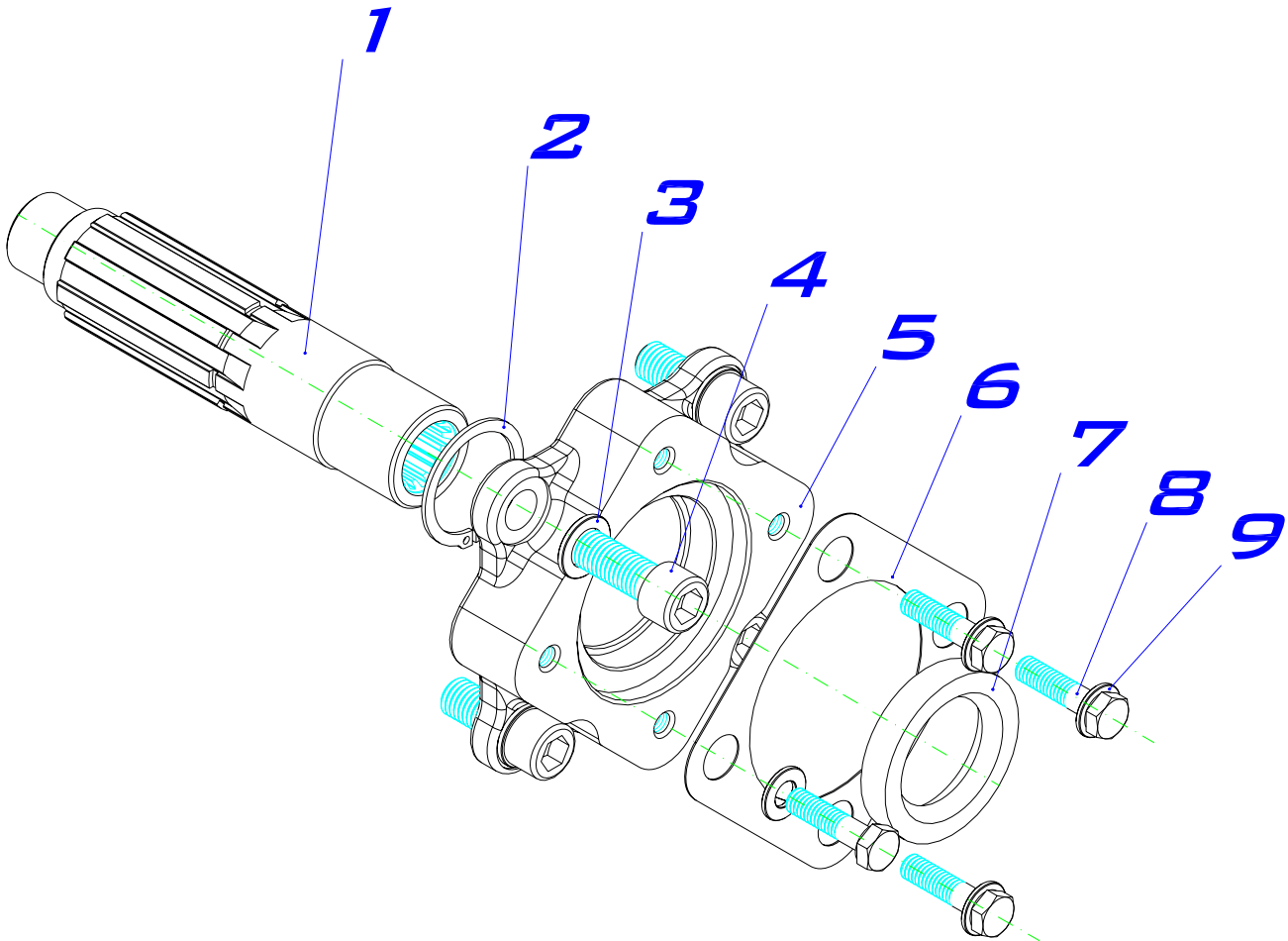
ITEM	QT.	DESCRIPTION	DIMENS.	CODE	BZ USA CODE
1	1	Output shaft	$\phi 1\frac{1}{4}$ "	203013871	
			$\phi 7/8$ "	203013971	
2	1	Round key woodruff Out. Shaft $\phi 1\frac{1}{4}$ "	1 1/8"x 5/16"	106040002	
		Round key woodruff Out. Shaft $\phi 7/8$ "	3/4"x1/4"	116040003	
3	1	Circlip DIN 471	$\phi 35$	101010005	



KITS

(OUTPUT TYRONE PUMP. Z=13)

April 2.003



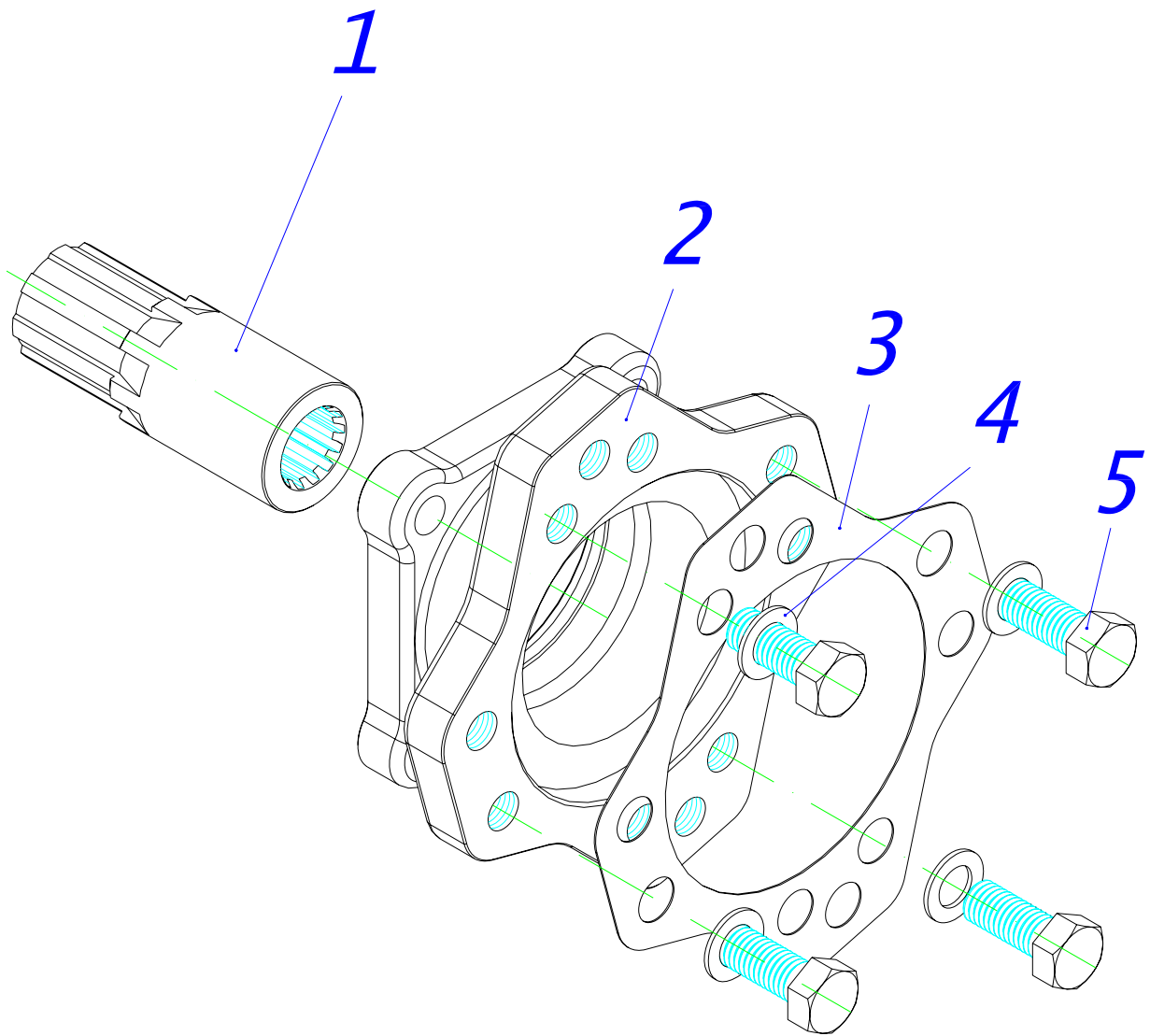
DESCRIPTION	CODE	PTO 1000 & 2000 SERIES
<i>OUTPUT KIT TYRONE PUMP Z=13</i>	<i>801135</i>	

PTO 1000 & 2000 SERIES

ITEM	QT.	DESCRIPTION	DIMENS.	CODE	PTO CODE
1	1	Output shaft, mount pump Z=13		203024091	
2	1	Circlip DIN 471	Ø 35	101010005	
3	4	Washer DIN 125	12.5 x 20 x 2	102090009	
4	4	Screw DIN 912	M12x25	116010061	
5	1	Adapter housing		202120491	
6	1	Gasket		108010130	
7	1	Oil seal BA SL	35x55x10	112090016	
8	4	Screw DIN 931	5/16" UNC x 25	116020017	
9	4	Washer DIN 125	Ø8	102010001	

ADAPTER KIT ISO 4 BOLT- SAE "B" 2/4 BOLT (706304)

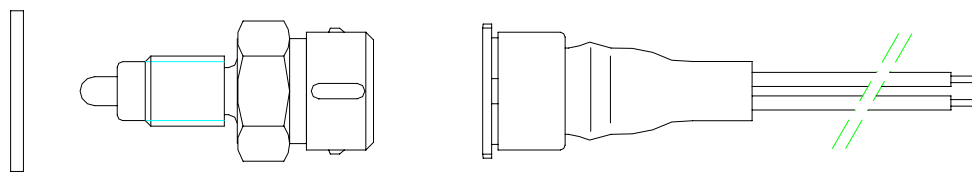
September 2.003



ITEM	QT.	DESCTIPTION	DIMENS.	CODE	PTO CODE
1	1	Output shaft Z=13		203053721	
2	1	Adapter housing		202027802	
3	1	Gasket		108010091	
4	4	Washer	Ø13	102010002	
5	4	Screw DIN 931	½" 13H UNC x 32	116020025	

SWITCH INDICATOR KIT (PNEUMATICAL PISTON)

906499



PRODUCT	CODE
CONNECTOR CABLE N.40007 (3m.)	906599
SWITCH N.40007	100070001
COPPER WASHER 12x18x1.5	102050002

SWITCH INDICATOR KIT 12V. => 9013599

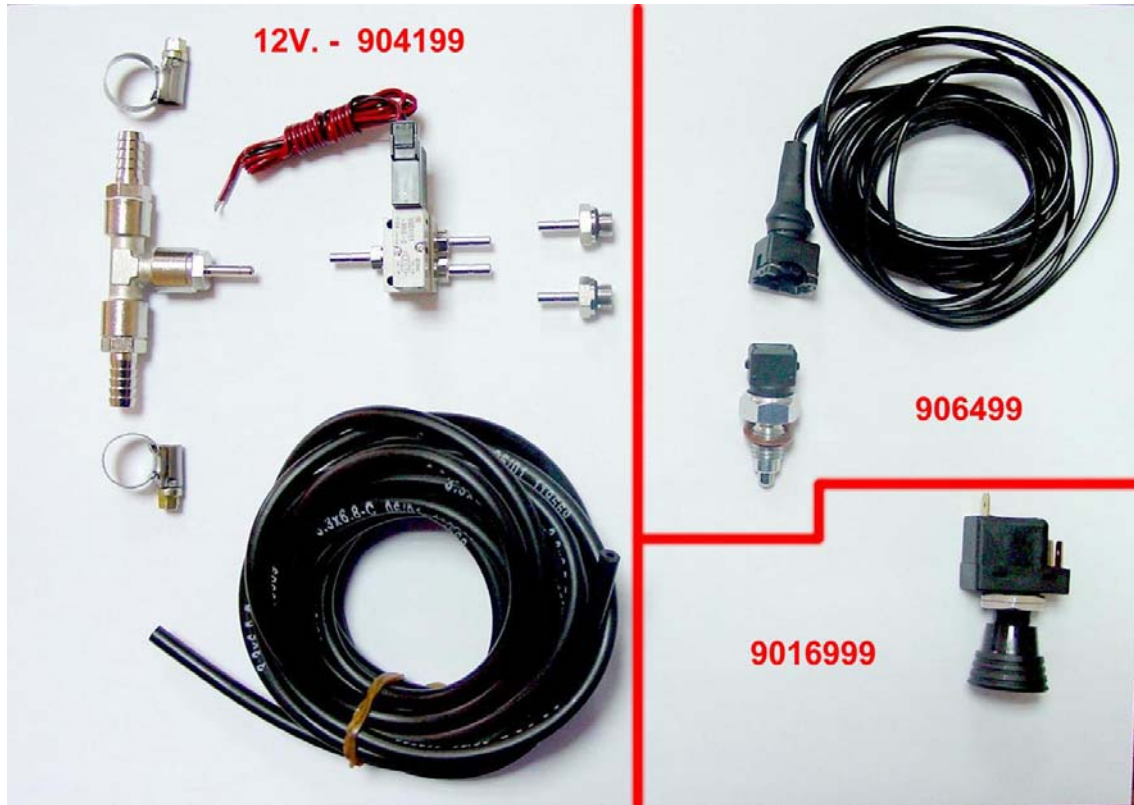
SWITCH INDICATOR KIT 24V. => 9013699

(MECHANICAL PISTON)

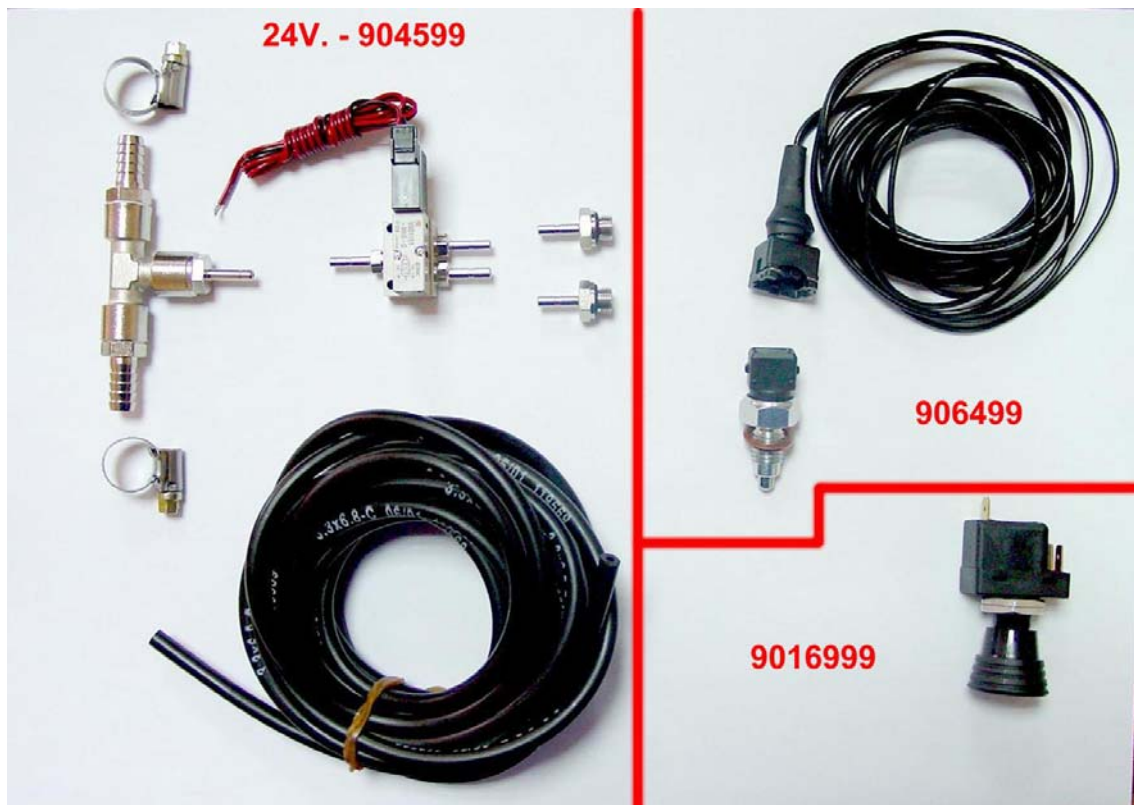


(VACUUM PISTON)

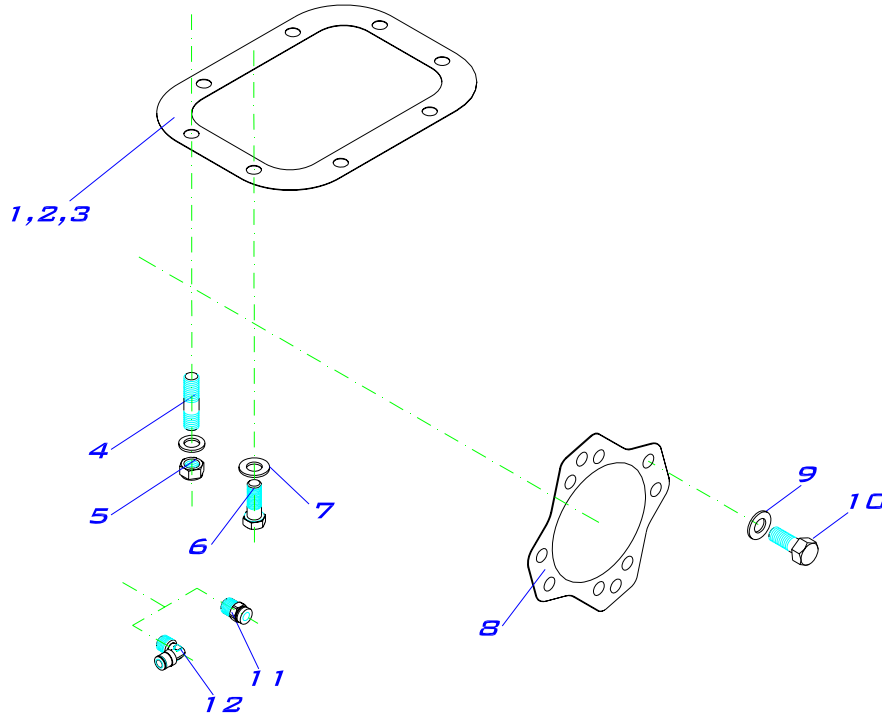
SWITCH INDICATOR & CONNECTIONS KIT 12V. =>9018499



SWITCH INDICATOR & CONNECTIONS KIT 24V. =>9018599

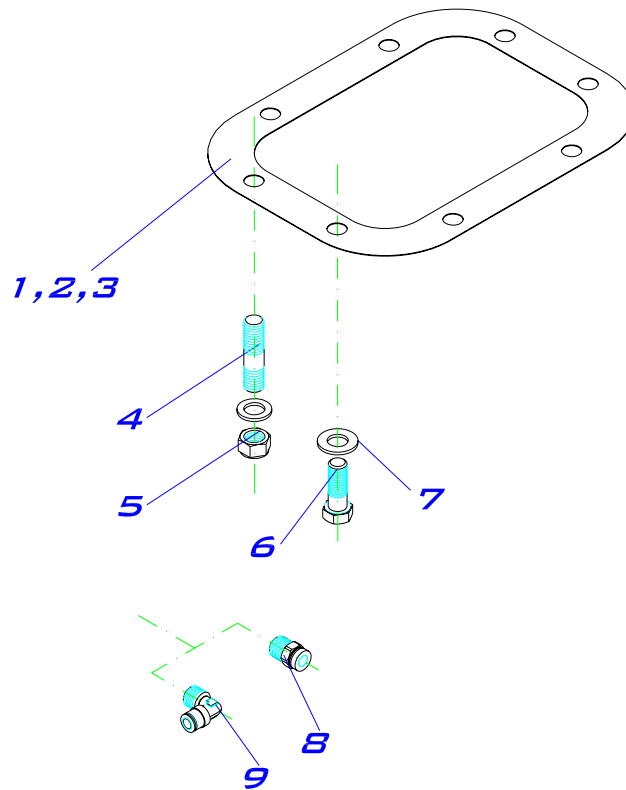


ASSEMBLY KIT: PTO 2000, PNEUMATIC, RA 808133
PTO 2010, PNEUMATIC, RA 8013633



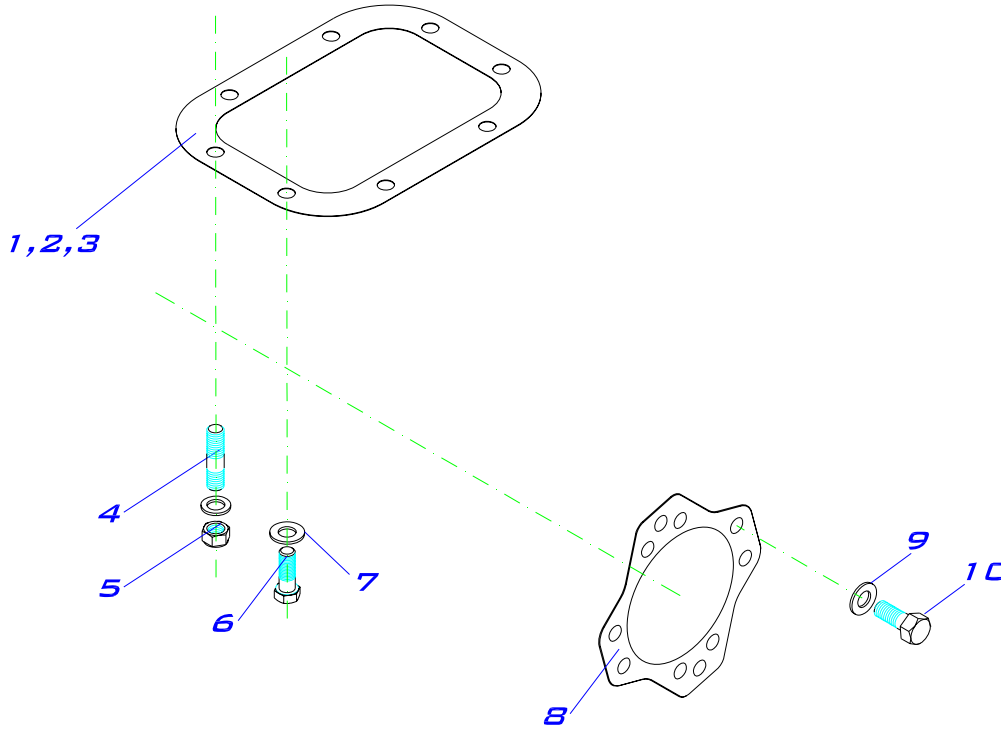
ITEM	QT.	DESCRIPTION	DIMENS.	CODE	BZ USA CODE
1	1	Gasket	Spe= 0.3 mm	108010099	
2	1	Gasket	Spe= 0.5 mm	108010003	
3	1	Gasket	Spe= 1mm	108010100	
4	2	Stud L=53	M12-1.75x25 / 7/16" UNC x 17	117020043	
5	2	Nut DIN 985	M12	119020003	
6	6	Hex. Screw 2000 Series.	7/16"X35	116020020	
		Hex. Screw 2010 Series.	7/16"X32	116020029	
7	8	Washer.	Ø12.5	102090009	
8	1	Gasket 2/4 bolt		108010091	
9	4	Washer	Ø13	102010005	
10	4	Hex. Screw.	1/2"X32	116020025	
11	1	Pneumatic quick connector.	¼" BSP	9029116	
12	1	Pneumatic quick connector. (90°)	¼" BSP	9029216	

ASSEMBLY KIT: PTO 2000, PNEUMATIC, ROUND SHAFT 808333



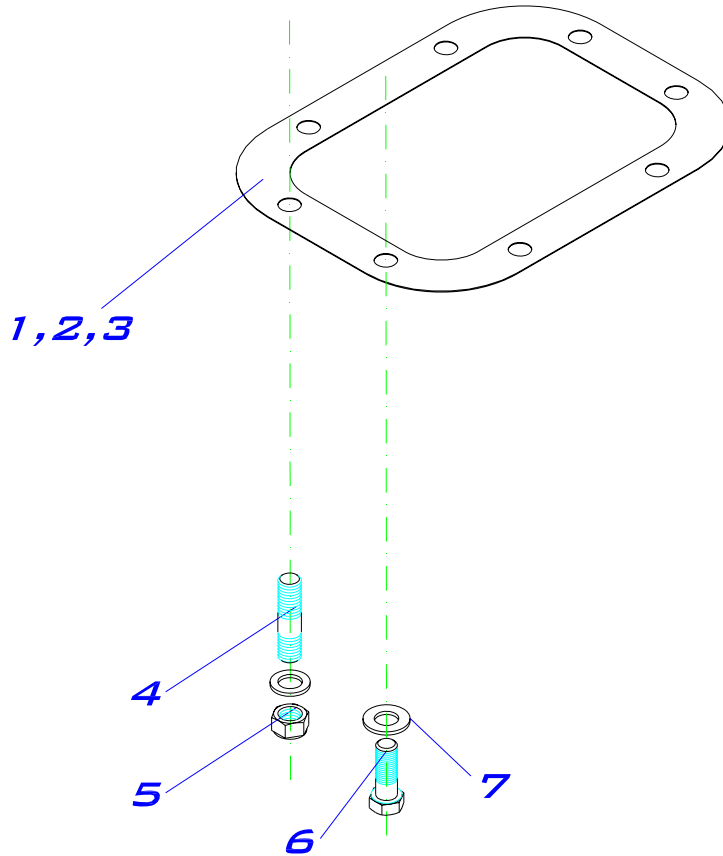
ITEM	QT.	DESCRIPTION	DIMENS.	CODE	PTO CODE
1	1	Gasket	Spe= 0.3 mm	108010099	
2	1	Gasket	Spe= 0.5 mm	108010003	
3	1	Gasket	Spe= 1mm	108010100	
4	2	Stud L=53	M12-1.75x25 / 7/16" UNC x 17	117020043	
5	2	Nut DIN 985	M12	119020003	
6	6	Hex. Screw.	7/16"X35	116020020	
7	8	Washer.	Ø12.5	102090009	
8	1	Pneumatic quick connector.	¼" BSP	9029116	
9	1	Pneumatic quick connector.(90°)	¼" BSP	9029216	

ASSEMBLY KIT: PTO 2000, MECHANICAL, RA 8010633



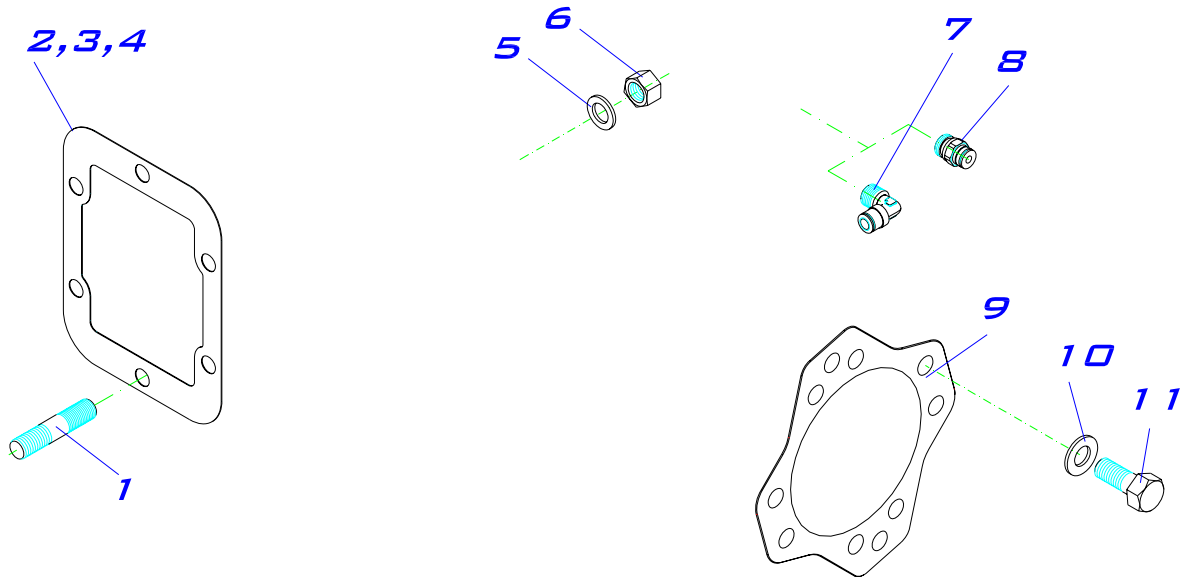
ITEM	QT.	DESCRIPTION	DIMENS.	CODE	PTO CODE
1	1	Gasket	Spe= 0.3 mm	108010099	
2	1	Gasket	Spe= 0.5 mm	108010003	
3	1	Gasket	Spe= 1mm	108010100	
4	2	Stud L=53	M12-1.75x25 / 7/16" UNC x 17	117020043	
5	2	Nut DIN 985	M12	119020003	
6	6	Hex. Screw.	7/16"X35	116020020	
7	8	Washer.	Ø12.5	102090009	
8	1	Gasket 2/4 bolt		108010091	
9	4	Washer	Ø13	102010005	
10	4	Hex. Screw.	1/2"X32	116020025	

**ASSEMBLY KIT: PTO 2000, MECHANICAL, ROUND SHAFT
8010733**



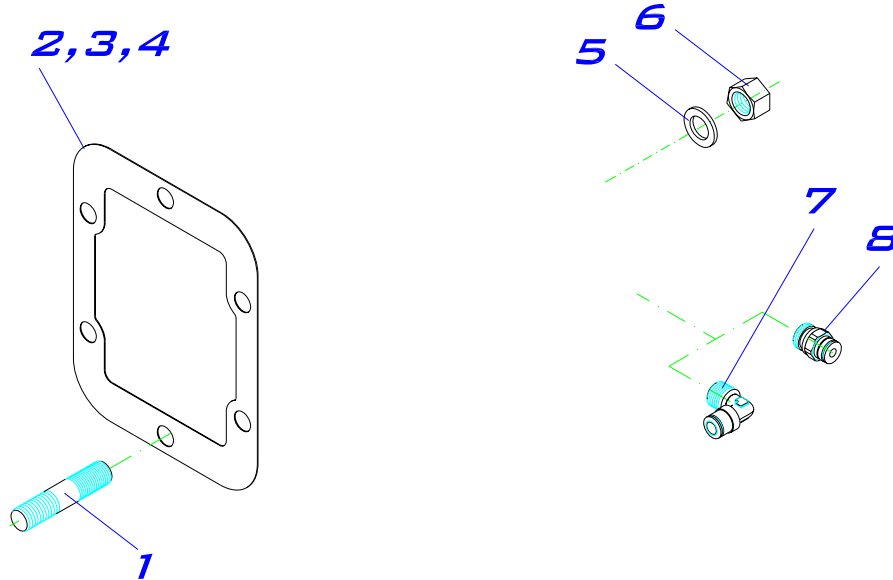
ITEM	QT.	DESCRIPTION	DIMENS.	CODE	PTO CODE
1	1	Gasket	Spe= 0.3 mm	108010099	
2	1	Gasket	Spe= 0.5 mm	108010003	
3	1	Gasket	Spe= 1mm	108010100	
4	2	Stud L=53	M12-1.75x25 / 7/16" UNC x 17	117020043	
5	2	Nut DIN 985	M12	119020003	
6	6	Hex. Screw.	7/16"X35	116020020	
7	8	Washer.	Ø12.5	102090009	

ASSEMBLY KIT: PTO 1000, PNEUMATIC, RA 809033



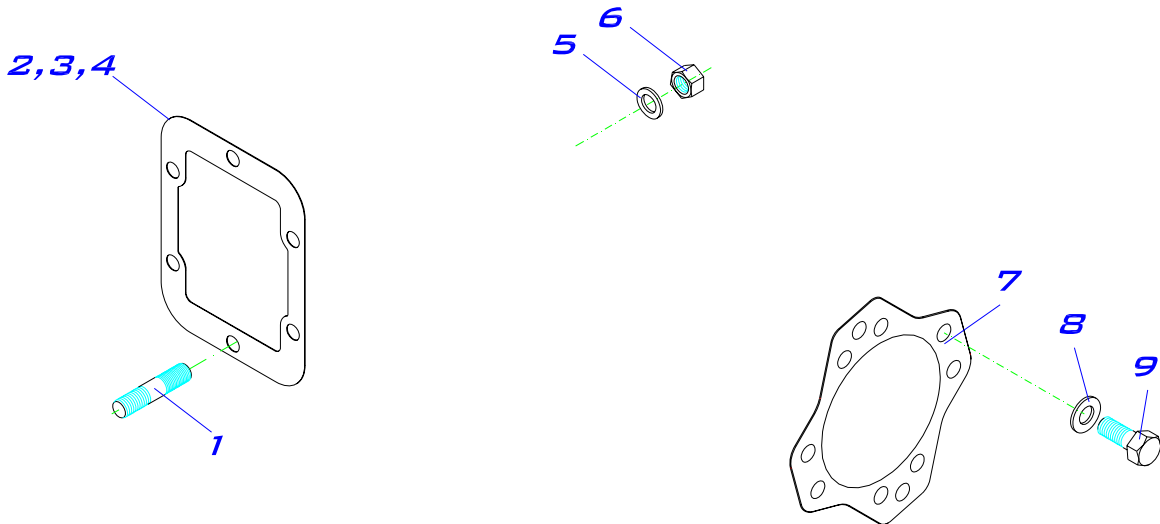
ITEM	QT.	DESCRIPTION	DIMENS.	CODE	PTO CODE
1	6	Stud L=50	23-3/8"x17s	117020094	
2	1	Gasket	Spe= 0.3 mm	108010102	
3	1	Gasket	Spe= 0.5 mm	108010004	
4	1	Gasket	Spe= 1mm	108010103	
5	6	Washer	Ø10,5	102090010	
6	6	Nut	M10-100	119010001	
7	1	Pneumatic quick connector. (90°)	¼" BSP	9029216	
8	1	Pneumatic quick connector.	¼" BSP	9029116	
9	1	Gasket 2/4 bolt		108010091	
10	4	Washer	Ø13	102010005	
11	4	Hex. Screw.	1/2"X32	116020025	

ASSEMBLY KIT: PTO 1000, PNEUMATIC, ROUND SHAFT 809333



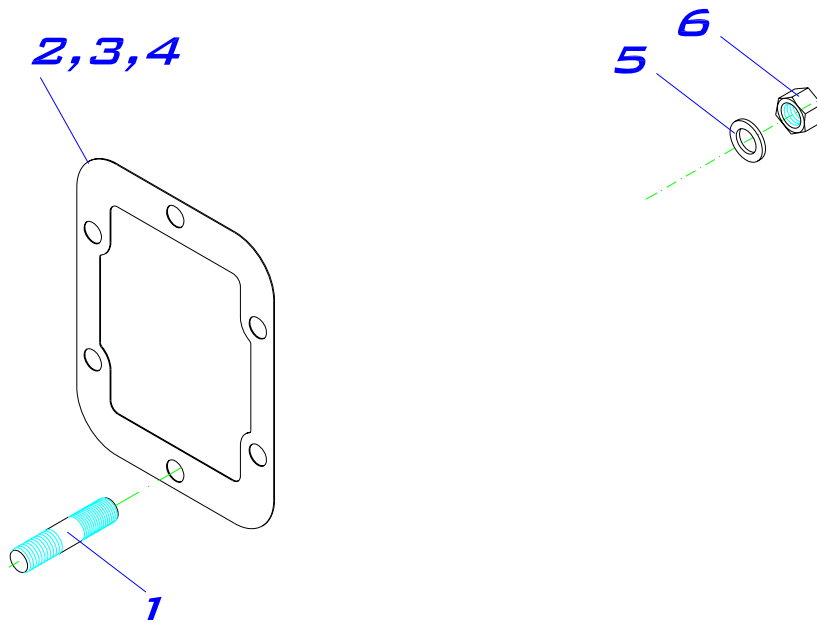
ITEM	QT.	DESCRIPTION	DIMENS.	CODE	PTO CODE
1	6	Stud L=50	23-3/8"x17s	117020094	
2	1	Gasket	Spe= 0.3 mm	108010102	
3	1	Gasket	Spe= 0.5 mm	108010004	
4	1	Gasket	Spe= 1mm	108010103	
5	6	Washer	Ø10,5	102090010	
6	6	Nut	M10-100	119010001	
7	1	Pneumatic quick connector. (90°)	¼" BSP	9029216	
8	1	Pneumatic quick connector.	¼" BSP	9029116	

ASSEMBLY KIT: PTO 1000, MECHANICAL, RA 8010433



ITEM	QT.	DESCRIPTION	DIMENS.	CODE	PTO CODE
1	6	Stud L=50	23-3/8"x17s	117020094	
2	1	Gasket	Spe= 0.3 mm	108010102	
3	1	Gasket	Spe= 0.5 mm	108010004	
4	1	Gasket	Spe= 1mm	108010103	
5	6	Washer	Ø10,5	102090010	
6	6	Nut	M10-100	119010001	
7	1	Gasket 2/4 bolt		108010091	
8	4	Washer	Ø13	102010005	
9	4	Hex. Screw.	1/2"X32	116020025	

**ASSEMBLY KIT: PTO 1000, MECHANICAL, ROUND SHAFT
8010533**



ITEM	QT.	DESCRIPTION	DIMENS.	CODE	PTO CODE
1	6	Stud L=50	23-3/8"x17s	117020094	
2	1	Gasket	Spe= 0.3 mm	108010102	
3	1	Gasket	Spe= 0.5 mm	108010004	
4	1	Gasket	Spe= 1mm	108010103	
5	6	Washer	Ø10,5	102090010	
6	6	Nut	M10-100	119010001	