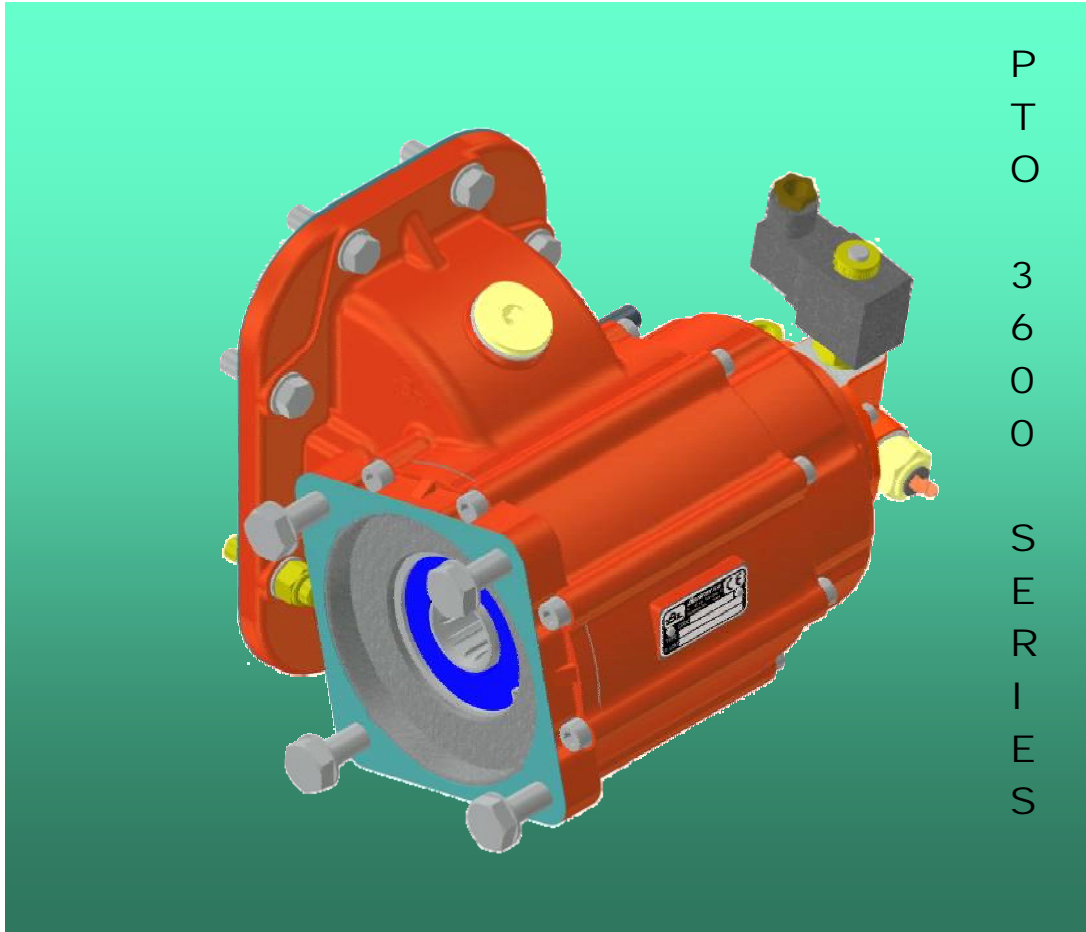


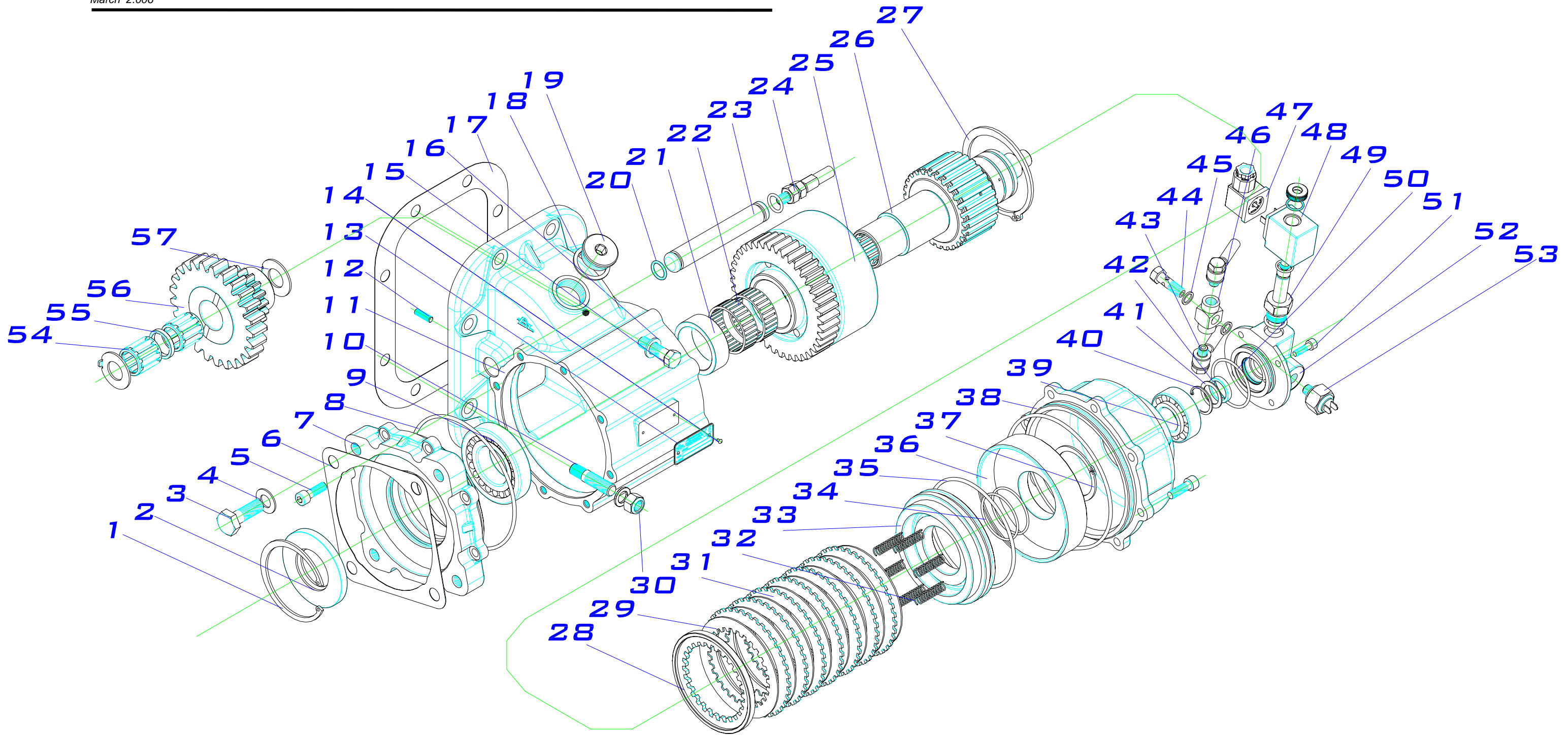


bezaresusa

PTO 3600 SERIES

ALLISON CLT 750
PART LIST





PTO 3600 SERIES SAE "C"
HYDRAULIC SHIFT
ALLISON CLT-750
Mounting position2

**PTO 3600 series SAE "C" HYDRAULIC SHIFT (M. position 2).
ALLISON CLT-750**

ITEM	QT.	DESCRIPTION	DIMENS.	CODE	BZ USA Part #
1	1	Snap ring DIN 472	Ø80	101020015	SR015
2	1	Seal BAF SL	40X80X8	112100023	SE023
3	4	Hex. Screw DIN 931 12.9 L=32	½" 13h UNC	116020025	CS025
4	4	Washer DIN 125	Ø13	102010002	WA002
5	16	Allen screw DIN 912 8.8	M8X25	106010009	AS009
6	1	Gasket SAE "C"		108010129	GA129
7	1	Adapter flange SAE "C"		202121361	FL361
8	2	O-ring NBR 70	134.5x3	107010112	OR112
9	1	Conical bearing 30.208	40x80x19.75	113300019	RB019
10	2	Stud L=53	M12x1.75-7/16" 14h	117020043	ST043
11	1	Housing		202112411	HS3600
12	1	Allen stud DIN 913	M6x20	117010012	AS012
13	1	Identification plate		126020001	PL001
14	2	Rivet DIN 7337	2.4x4	100050003	RI003
15	6	Screw DIN 931 12.9	7/16"x35	116020020	CS020
16	8	Washer DIN 125	12.5x19.8x2	102090009	WA009
17	1	Gasket		108010003	GA8015
18	1	Cooper washer	30x37	102060010	WA010
19	1	Plug	M30x1.5	208020731	PL731
20	2	O-ring (VITON)	1.5x2.5	107100030	OR022
21	1	Spacer bush		209111401	SB401
22	2	Needle bearing	45x50x17	113010042	RB042
23	1	Pin		203044001	IP132P
24	1	Lubrication kit		9018699	PLH699
25	1	Output gear		201019041	R/041
26	1	Shaft		203025161	OS161
27	1	Snap ring DIN 471	Ø85	101010029	SR029
28	1	Toothed washer		209019201	WA201
29	8	Friction disc	Ø106	100110001	FD001
30	2	Nut DIN 985	M12	119020003	NU003
31	7	Clutch plate	Ø114	100110002	CP002
32	6	Spring		109010019	SP019
33	1	Piston		204010481	PI481
34	2	O-ring (VITON)	46x2	107100014	OR057
35	1	O-ring (VITON)	110X3	107100013	OR052
36	1	Piston liner		202029181	PL181
37	1	Snap ring DIN 471	Ø50	101010009	SR009
38	1	Flange		202122401	FL401
39	1	Conical bearing 32.205	25x52x19.25	113300022	RB022
40	1	Snap ring DIN 472	Ø28	101020028	SR028
41	1	Washer	20x28x1	103010021	WA021
42	1	Collar (VITON)	20x26x4.8	105090001	BU001
43	1	Pressure lube hose, Allison series		9034599	PLH599
44	1	Screw for T connector body	M10x1	200101571	CS571
45	2	Aluminium washer	10x14	102050007	WA007
46	1	T Connector body		200101561	FI561
47	1	Connector		9027190	CO190
48	1	Coil 12V. for electromagnet.		9026990	CO990
49	1	Electromagnet cartridge		9026890	CO890



PTO 3600 series SAE "C" HYDRAULIC SHIFT (M. position 2)
ALLISON CLT-750

50	1	O-ring	44x2.62	107100061	OR070
51	4	Allen screw DIN 912 8.8	M6x20	116010174	AS174
52	1	Collar carrier cover		208012081	HA081
53	1	Hydraulic pressure switch on		900999	SW999
54	2	Needle bearing	20x30x30	113010003	RB002
55	1	Spacer bush		209013491	SB491
56	1	Input gear		201019001	TABLE 1
57	2	Antifriccion washer		211013431	WA431

BZ

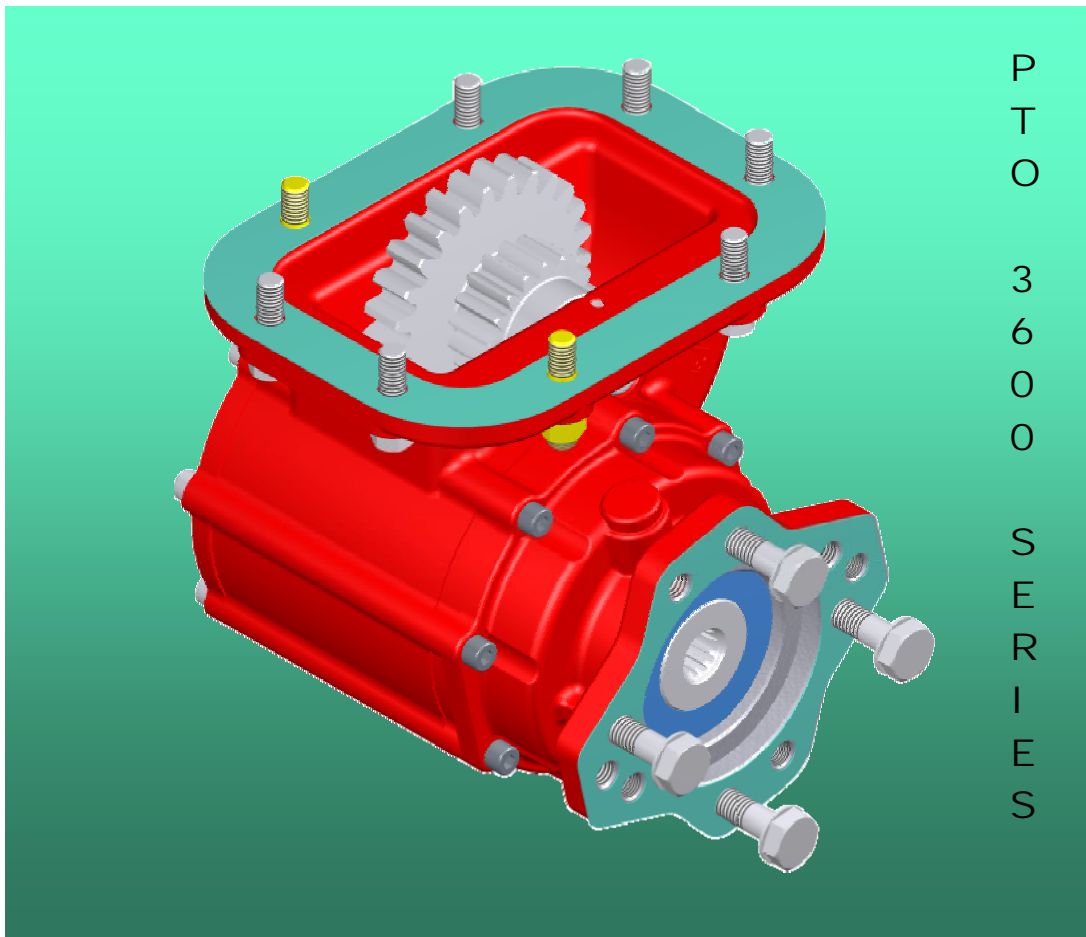
bezaresusa

PTO 3600

SERIES

EATON FULLER SERIES

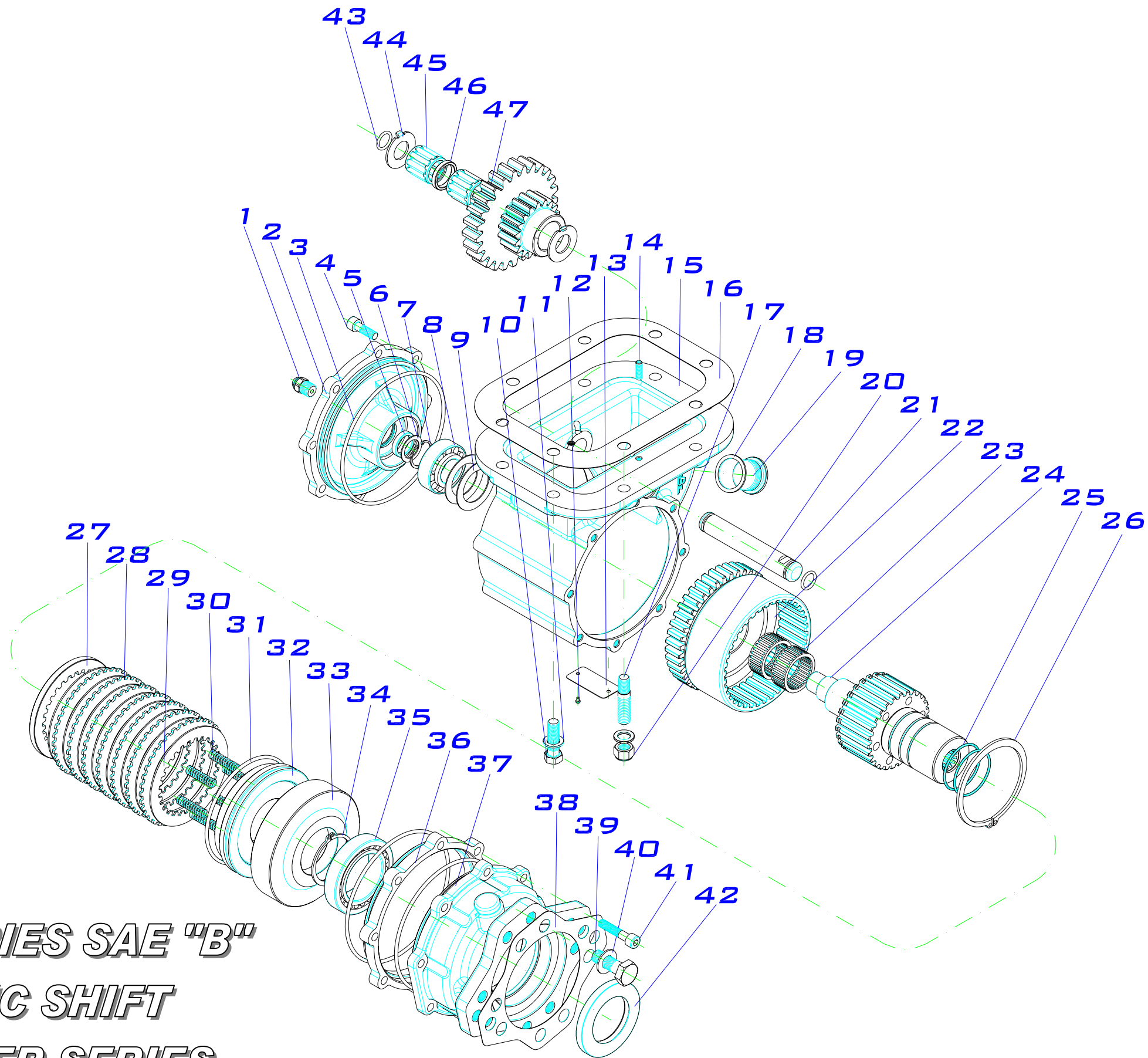
PART LIST



P
T
O

3
6
0
0

S
E
R
I
E
S



PTO 3600 SERIES SAE "B"
PNEUMATIC SHIFT
EATON FULLER SERIES
Mounting position 1

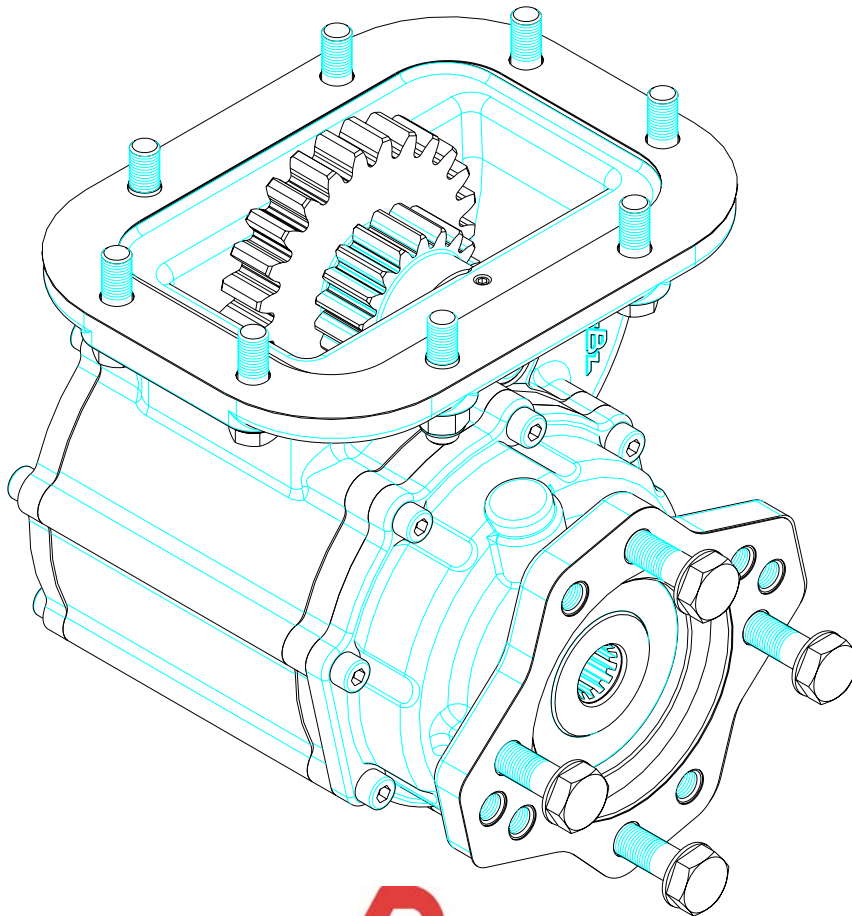
3600 series SAE " B " PNEUMATIC SHIFT (M. position 1).
EATON FULLER SERIES.

ITEM	QT.	DESCRIPTION	DIMENS.	CODE	BZ USA Part #
1	1	Connector BZHF.	¼ " BSP	9010216	FI216-S
2	1	Bearing carrier cover.		208012091	EC091
3	3	O-ring.	134.5 x 3	107010112	OR112
4	8	Screw DIN 912 8.8.	M8x25	116010009	AS009
5	1	Pneumatic Collar (VITON) .	20 x 26 x 4.8	105090001	BU001
6	1	Fitting washer.	20 x 28 x 1	103010021	WA021
7	1	Snap ring DIN 472.	Ø28	101020028	SR028
8	1	Conical bearing 32205.	25 x 52 x 19.5	113300022	RB022
9	2	Friction washer.	35 x 52 x 1	114010002	WA002
10	6	Screw DIN 931 12.9.	7/16"x35	116020020	CS020
11	8	Washer DIN 125.	12.5X19.8X2	102090009	WA009
12	2	Rivet DIN 7337.	2.4X4	100050003	RI003
13	1	Indentification plate.		126020001	PL001
14	1	Allen stud DIN 913.	M6x20	107010012	AS012
15	1	Housing.		202112412	HS3600
16	1	Gasket.		108010003	GA8015
17	2	Stud L=53	M12x1.75-7/16"14h	117020043	ST043
18	1	Cooper washer	30x37	102060010	WA010
19	1	Plug	M30x1.5	208020731	PL731
20	2	Nut DIN 985.	M12	119020003	NU003
21	1	Pin.		203041181	IP181
22	1	Bottom gear.		Table 1.	TABLE 1
23	2	Needle bearing.	35x42x18	113010015	RB015
24	1	Shaft.		203023881	OS881
25	2	O-ring (VITON).	46 x 2	107100014	OR057
26	1	Snap ring DIN 471.	Ø85	101010029	SR029
27	1	Toohged washer (ALLISON PTO).		209019201	WA201
28	7	Clutch plate.	Ø114	100110002	CP002
29	8	Friction disc.	Ø106	100110001	FD001
30	6	Spring ZF ball retention.		109010019	SP019
31	1	O-ring (VITON).	110 x 3	107100013	OR052
32	1	Piston.		204010481	PI481
33	1	Piston liner Allison.		202029181	PL181
34	1	Snap ring DIN 471	Ø50	101010009	SR009
35	1	Conical bearing 32010 X	50 x 80 x 20	113300021	RB021
36	1	Spacer flange		209100801	SP801
37	1	Flange sae b 2/4 bolt		202100311	FL311
38	1	Gasket		108010091	GA091
39	4	Screw DIN931 12.9	½" BSP 13H UNC	116020025	CS025
40	4	Washer DIN 125	Ø13	102010002	WA002
41	8	Screw DIN 912 8.8	M8x40	116010011	CS011
42	1	Seal BAB (VITON)	50x80x8	112110007	SE011
43	2	O-ring	15 x 2.5	107100030	OR022
44	2	Antifriction washer		211013431	WA431
45	2	Needle bearing	20 x 30 x 30	113010003	RB003
46	1	Spacer bush		209013491	SB491
47	1	Upper gear		Table 1.	TABLE 1

TABLE 1. PTO RATIO GEAR SET

PTO	RATIO	INPUT GEAR	Z		OUTPUT GEAR	Z
			SM. CLUSTER	LG. CLUSTER		
PTO 3600 SERIES	RATIO "B" : 33%	R/707	15	25	R/708	43
	RATIO "C" : 43%	R/671	18	25	R/672	41
	RATIO "E" : 50%	R/727	19	25	R/728	39

PTO 3600 SERIES (EATON FULLER SERIES).



PTO 2300 / 3000 / 3600 USA CODING

2300 **X** **B** **N** **01** **1** **RA**

SERIE:

2300.- Clutch PTO, 6 bolts
 3000.- Allison 6 bolts
 3600.- Clutch PTO, 8 bolts

VERSIONS:

X.- STANDARD.
 P.- GREASABLE IDLER SHAFT.

RATIOS:

2300S/3000S/3600S	B (34%)	C (42%)	E (50%)
AT 540 - 543 - 545	1: 0.744	1: 0.970	1:1.076
CLT 740 D-FS, CLT 750-754-754 CR CLBT 750, HT 740-750-750 CRD, HT 750 DB-DR-DRB	1: 0.982	1: 1.280	1:1.420
MT 643-644-647, MT 653 DR, MT 654 CR, MTB 643	1: 1.056	1: 1.376	1:1.520

SHIFTER TYPE:

N = AIR WITHOUT 101 AIR KIT
S = AIR WITH 126 AIR KIT
T = AIR WITH 127 AIR KIT
U = AIR KIT WITH 128 AIR KIT
A = AIR WITH 101 AIR KIT
H = HYDRAULIC
E = ELECTRIC 12V. OVER HYDRAULIC
F = ELECTRIC 24V. OVER HYDRAULIC
M = CONSTANT MESH

OUTPUT TYPE:

IA = ISO 4 BOLT
FA = FLANGE SAE 1100
FB = FLANGE SAE 1300
FC = FLANGE SAE 1400
FD = FLANGE DIN 100
RA = SAE "B" 2/4 BOLT 13T. ROTATABLE
RJ = SAE C. 4 BOLT
SE = SAE TYPE 1 1/4" ROUND SHAFT.
SG = SAE TYPE 1 1/2" ROUND SHAFT.

MOUNTING POSITION:

- 1.- RIGHT, FORWARD
- 3.- LEFT, FORWARD

INPUT GEAR:

01 = FULLER SERIES
 60 = ALLISON 2300 / 3000 SERIES

