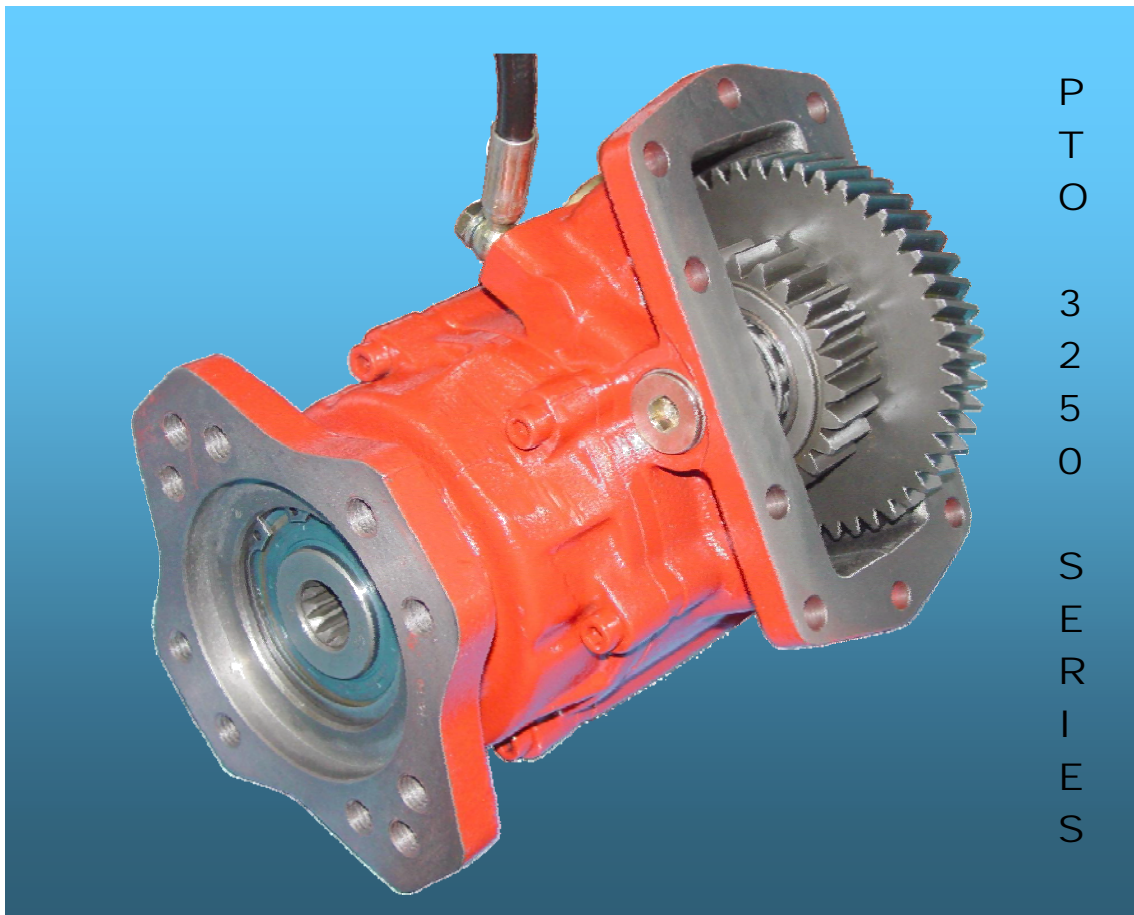




PTO 3250 SERIES

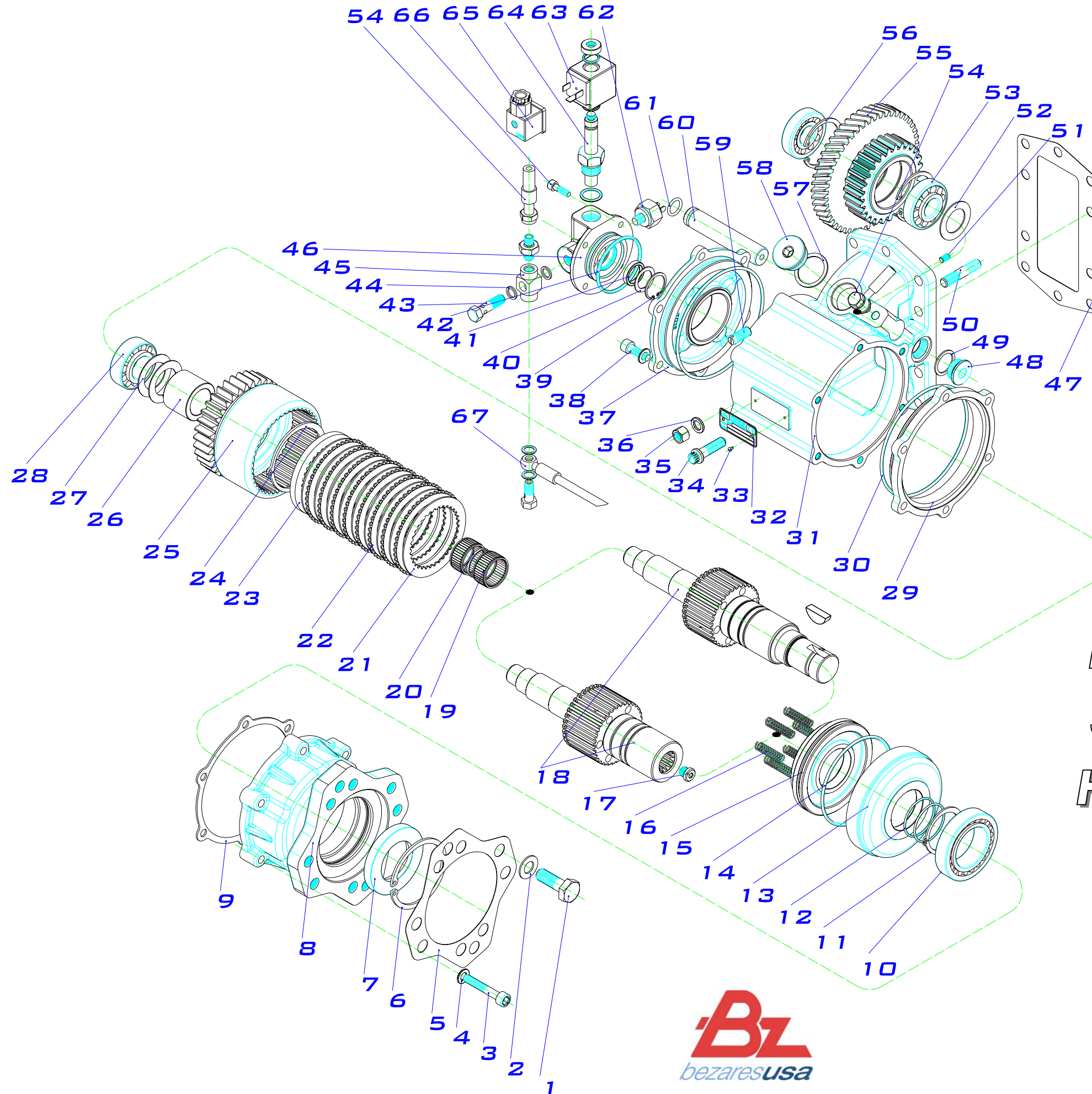
PART LIST



P
T
O

3
2
5
0

S
E
R
I
E
S



**PTO 3250 SERIES
SAE "B" 2/4 BOLT
HYDRAULIC SHIFT**

PTO 3250 series SAE "B" 2/4 BOLT HYDRAULIC SHIFT

ITEM	QT.	DESCRIPTION	DIMENS.	CODE	BZ USA Part #
1	4	Screw DIN 931, hex head	½" 13 UNC x 32	116020025	CS025
2	4	Washer DIN 125	Ø13	102010002	WA002
3	6	Screw DIN 912 8.8	M8x50	116010087	AS087
4	12	Washer DIN 125	Ø8	102010001	WA001
5	1	Gasket		108010091	GA091
6	1	Snap Ring DIN 472	Ø75	101020014	SR014
7	1	Seal BAF SL	45x75x10	112090009	SE009
8	1	Adapter flange		202121442	FL442
9	1	Gasket		108010148	GA148
10	1	Conical bearing 32.009	45X75X20	113300025	RB025
11	1	Snap ring DIN 471	Ø45	101010007	SR007
12	2	O-ring (VITON)	Ø40x2	107100016	OR016
13	1	Piston liner		200131801	PL801
14	1	O-ring (VITON)	Ø94.5x3	107100017	OR017
15	1	Piston		204010631	PI631
16	6	Spring		109010019	SP019
17	1	Plug	M10x1	118020030	PL030
18	1	Shaft		Table 4	TABLE 4
19	2	Needle bearing	30X35X17	113010011	RB011
20	1	Spacer bush	30x32x2.5	209015561	SB561
21	9	Friction disc	Ø89	100110003	FD003
22	8	Clutch plate	Ø94	100110004	CP004
23	1	Toothed washer		209110961	WA961
24	1	Snap ring DIN 471	Ø70	101010038	SR038
25	1	Output gear		Table 2	TABLE 2
26	1	Spacer bush	30x42x37	209111031	SB031
27	2	Friction washer	30 x 47 x 1	114010001	WA001
28	1	Conical bearing 32205 B	25x52x19.25	113300022	RB022
29	1	Spacer flange		209101391	SF391
30	2	O-ring	Ø115x3	107010100	OR100
31	1	Housing 10 bolt		202112041	HS3250
32	1	Identification plate		126020001	PL001
33	2	Rivet	2.4x4	100050003	RI003
34	5	Special screw	M10x35	116080006	CS001
35	3	Special nut	M10x1	119010001	NU001
36	3	Washer	Ø10.5x16.8x2	102090010	WA010
37	1	Bearing carrier cover		208012151	EC151
38	6	Screw DIN 912 8.8	M8x25	116010009	AS009
39	1	Snap ring DIN 472	Ø28	101020028	SR028
40	1	Fitting washer DIN 988	20x28x1	103010021	WA021
41	1	Collar (VITON)	20x26x4.8	105090001	BU001
42	1	O- ring NBR 70	44x2.62	107010070	OR070
43	1	Screw for "T" connector body	M10x1	200101571	FI571
44	2	Aluminium washer	Ø10x14	102050007	WA007
45	1	"T" connector body	1/8" BSP	200101561	FI561
46	1	Cover hydraulic Allison 3100 series		208012081	HA081
47	1	Gasket		108010081	GA081
48	1	Plug	M22x1.5	118020021	PL021
49	1	Aluminium washer	22x28x1.5	102050003	WA003
50	3	Stud L=50 mm, sealed	M10-17/ 1.5X25 1	117020055	ST055

PTO 3250 series SAE "B" 2/4 BOLT HYDRAULIC SHIFT

51	1	Set screw	M6x10	117010006	SS006
52	1	Fitting washer AS.	20x35	114010008	WA008
53	2	Conical bearing 30304 A	20x52x16.25	113300002	RB002
	1	Conical bearing 32304 A (ONLY Ratio B)	20x52x22.25	113300023	RB035
54	1	Pressure lube hose, MD/HD series		9018699	PLH899
55	1	Input gear.		Table 2	TABLE 2
56	1	Snap ring DIN 472	Ø52	101020007	SR007
57	1	Copper washer	30x37x1.5	102060010	WA010
58	1	Plug	M30x1.5	208020731	PL731
59	2	Guide		111010014	GD014
60	1	Pin		203043391	IP391
61	1	O-ring	Ø15x2.5	107100030	OR022
62	1	Hydraulic pressure switch on	1/8" BSP	900999	SW999
63	1	Coil 12 V. for electromagnet		9026990	CO990
64	1	Electromagnet cartridge		9026890	CO890
65	1	Connector		9027190	CO190
66	4	Screw DIN 912 8.8, allen head	M6 x 20	116010003	AS003
67	1	Lubrication kit Allison 3100 series		900899	PLH899

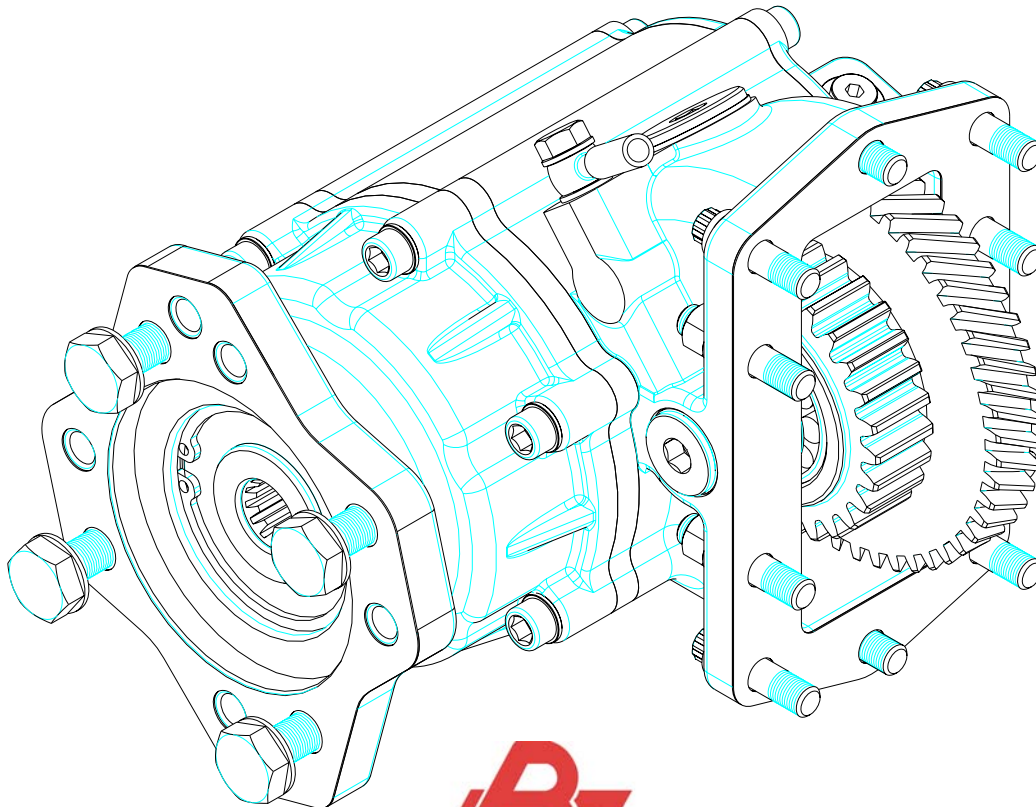
TABLE 4 OUTPUT SHAFT

SHAFT TYPE	SHAFT CODE	REFERENCE	KEY CODE
SHAFT Ø1 ¼" RND 5/16" KEY	203014841	E/484	106040002
SHAFT Z= 13 T	203034661	E/466	—————
SHAFT Z= 15 T	203034891	E/489	—————

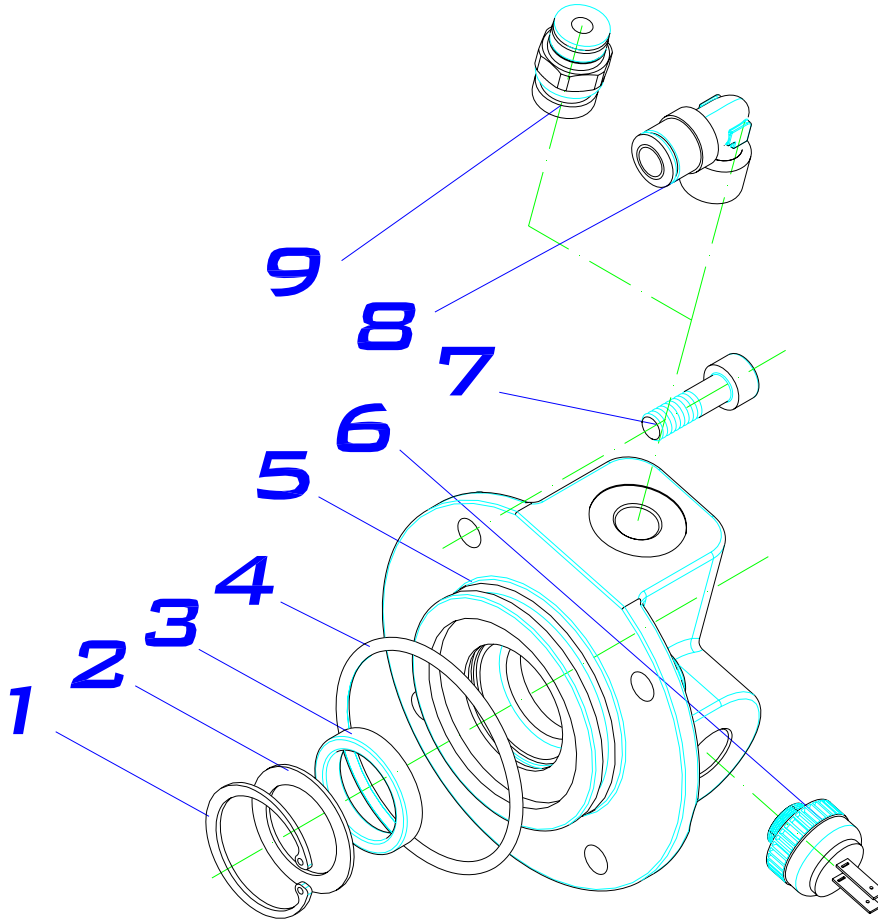
TABLE 2 PTO RATIO GEAR SET

PTO	RATIO	INPUT GEAR	Z		OUTPUT GEAR	Z
			SM. CLUSTER	LG. CLUSTER		
ALLISON 10 BOLT 3250 series	RATIO "B" : 55%	R/927	21	49	R/928	38
	RATIO "C" : 63%	R/772-1	23	49	R/901	36
	RATIO "E" : 73%	R/774-1	25	49	R/902	34
	RATIO "J" : 84%	R/776-1	27	49	R/898	32
	RATIO "M" : 110%	R/800 -1	31	49	R/903	28

PTO 3250 SERIES



PNEUMATICAL SHIFTING KIT. (909599).



PTO 3250 SERIES

ITEM	QT.	DESCRIPTION	DIMENS.	CODE	BZ USA Part #
1	1	Circlip DIN 472.	Ø28	101020028	SR028
2	1	Washer PS.	20x28x1	103010021	WA021
3	1	Pneumatic collar (VITON).	20x26x4.8	105090001	BU001
4	1	O-ring . (NBR 70).	44x2.62	107010070	OR070
5	1	Cover pneumatic Allison MD.		208012261	EC542
6	1	Pressure swicht on.		9015399	SW999A
7	4	Screw DIN 912 8.8 .		116010122	AS122
8	1	Suction pipe, elbow 90°	¼ BSP	9028216	FI216-E
9	1	Straight connector.	¼ BSP	9028116	FI216-S

PTO 3250 USA CODING

