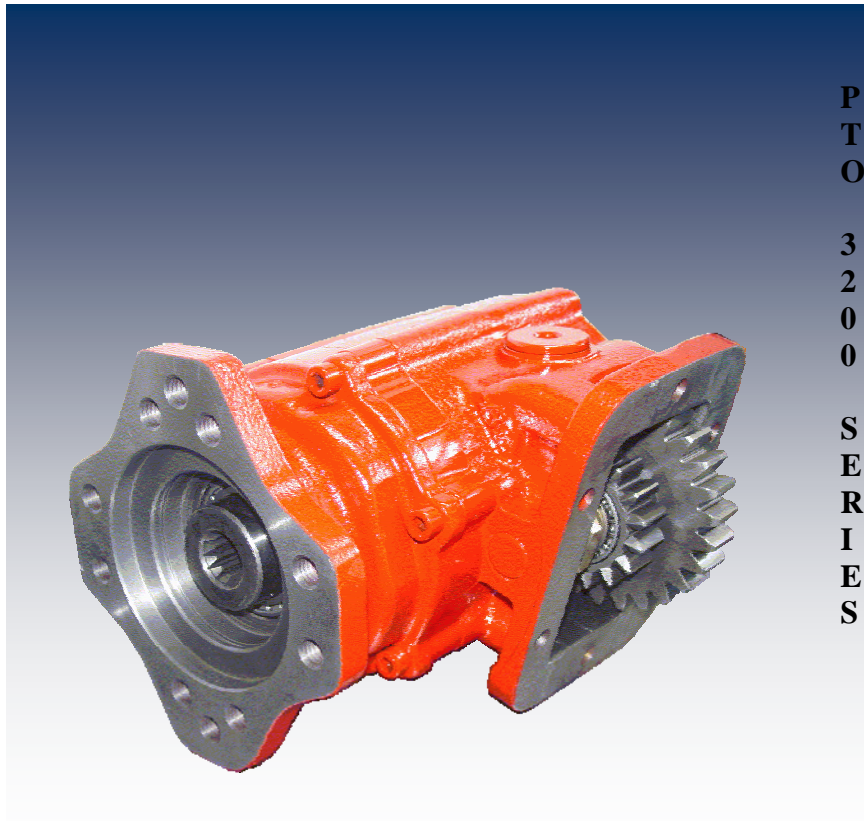




PTO 3200 SERIES

(PNEUMATIC SHIFT)

PART LIST

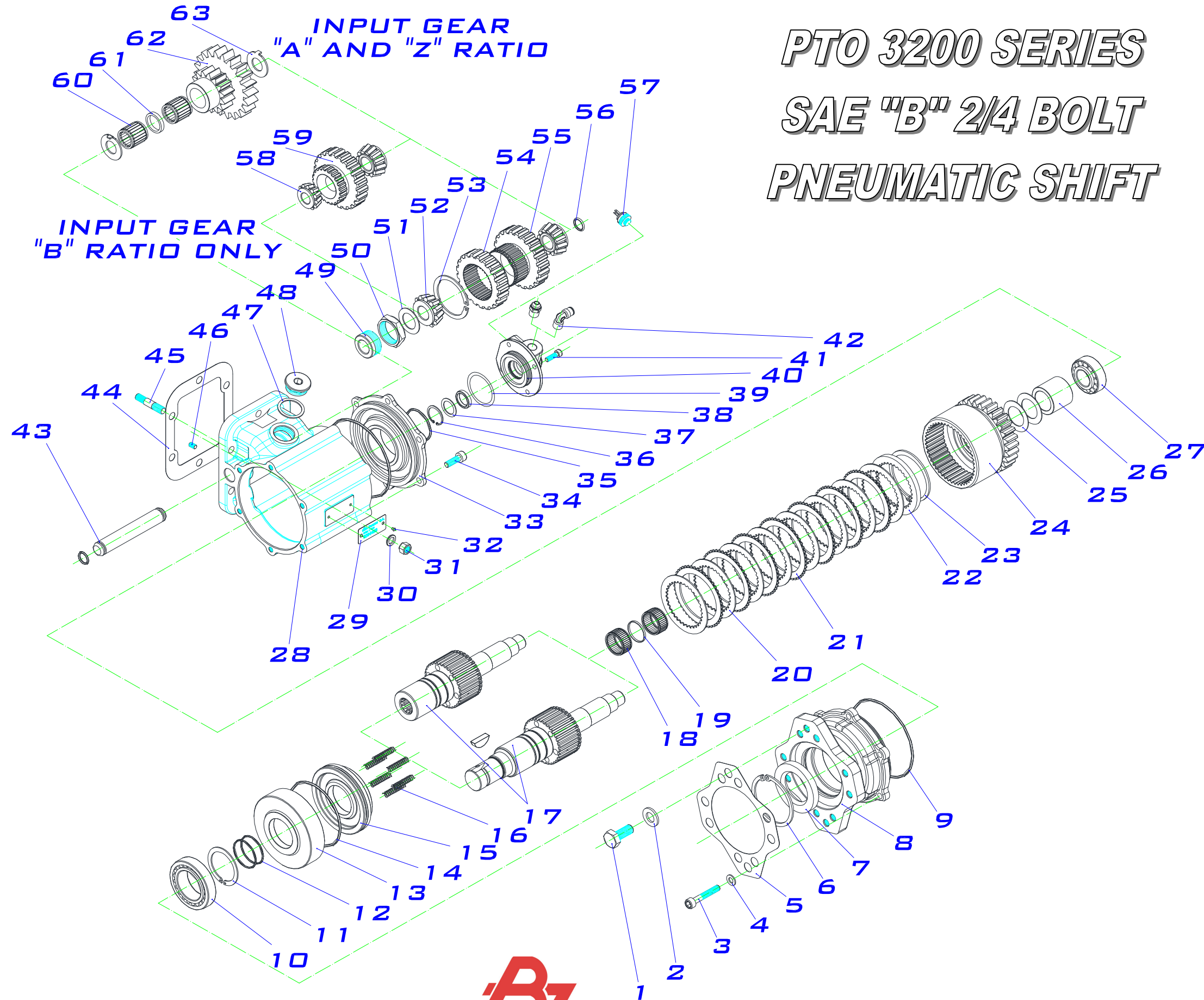


P
T
O

3
2
0
0

S
E
R
I
E
S

PTO 3200 SERIES SAE "B" 2/4 BOLT PNEUMATIC SHIFT

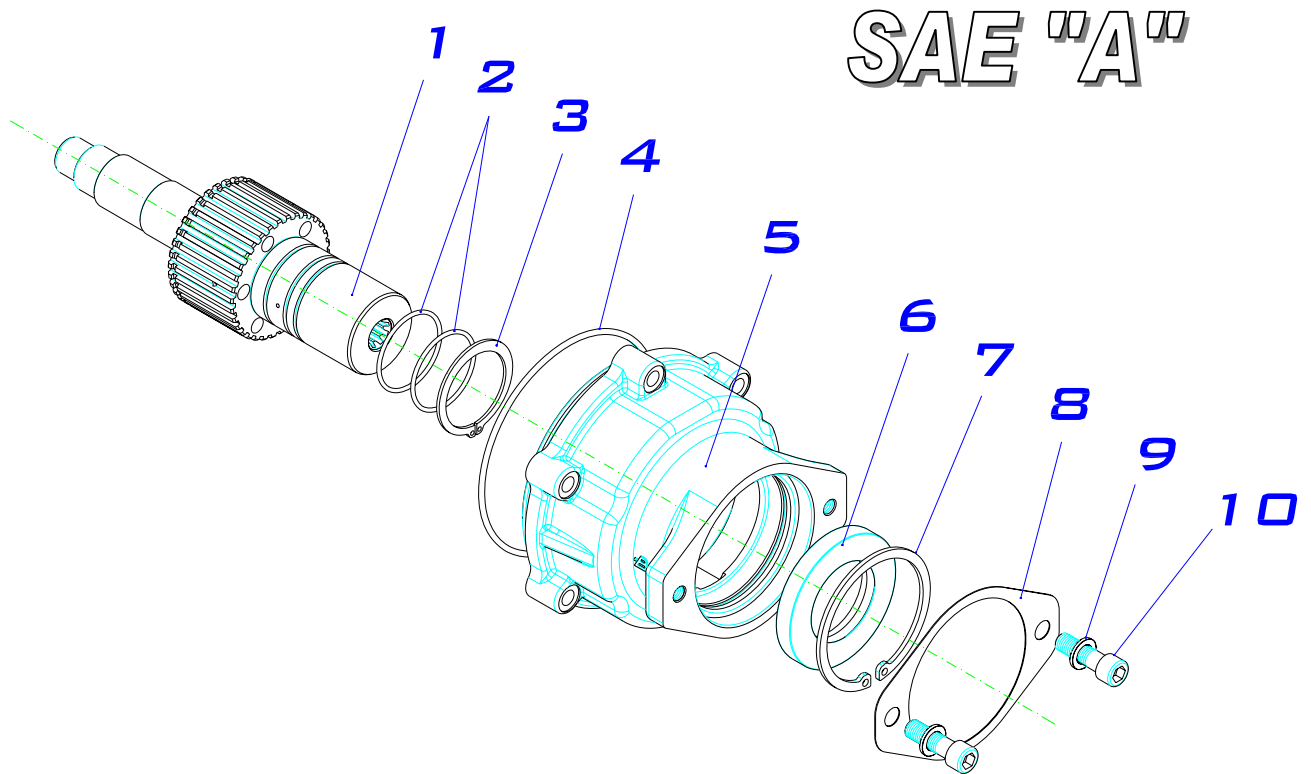


PTO 3200 series SAE "B" 2/4 BOLT PNEUMATIC SHIFT

ITEM	QT.	DESCRIPTION	DIMENS.	CODE	BZ USA CODE
1	4	Screw DIN 931, hex head	½" 13 UNC x 32	116020025	CS025
2	4	Washer DIN 125	Ø13	102010002	WA002
3	6	Screw DIN 912 8.8	M8x40	116010011	CS011
4	6	Washer DIN 125	Ø8	102010001	WA001
5	1	Gasket		108010091	GA091
6	1	Snap Ring DIN 472	Ø75	101020014	SR014
7	1	Seal BAF SL	45x75x10	112090009	SE009
8	1	Adapter flange		202121441	FL441
9	2	O-ring	115 x 3	107010100	OR100
10	1	Conical bearing 32.009	45X75X20	113300025	RB025
11	1	Snap ring DIN 471	Ø45	101010007	SR007
12	2	O-ring (VITON)	Ø40x2	107100016	OR016
13	1	Piston liner		200131801	PL801
14	1	O-ring (VITON)	Ø94.5x3	107100017	OR017
15	1	Piston		204010631	PI631
16	6	Spring		109010019	SR019
17	1	Shaft		Table 4	TABLE 4
18	2	Needle bearing	30X35X17	113010011	RB011
19	1	Spacer bush	30x32x2.5	209015561	SB561
20	9	Friction disc	Ø89	100110003	FD003
21	8	Clutch plate	Ø94	100110004	CP004
22	1	Toothed washer		209110961	WA961
23	1	Snap ring DIN 471	Ø70	101010038	SR038
24	1	Output gear		Table 2 & 3	TABLE 2 & 3
25	2	Friction washer	30 x 47 x 1	114010001	WA001
26	1	Spacer bush	30x42x37	209111031	SB031
27	1	Conical bearing 32205	25x52x19.25	113300022	RB022
28	1	Housing 6 bolt		202111431	HS3200
29	1	Identification plate		126020001	PL001
30	6	Washer	Ø10.5x16.8x2	102090010	WA010
31	6	Special nut	M10x100	119010001	NU001
32	2	Rivet	2.4x4	100050003	RI003
33	1	Bearing carrier cover		208012151	EC151
34	6	Screw DIN 912 8.8	M8x25	116010009	AS009
35	1	O-ring	44x2.62	107010070	OR070
36	1	Snap ring DIN 472	Ø28	101020028	SR028
37	1	Fitting washer DIN 988	20x28x1	103010021	WA021
38	1	Collar (VITON)	20x26x4.8	105090001	BU001
39	*	Fitting washer DIN 988 (As adjusting)	42 x 52 x 0.1	103010027	WA027
40	1	Collar carrier cover		208012261	
41	4	Screw DIN 912 allen 8.8	M6x20	116010003	AS003
42	1	Straight connector	¼ BSP	9028116	FI216-S
		Elbow connector	¼ BSP	9028216	FI216-E
43	1	Pin shaft		203042531	IP531
43A	1	Pin shaft only to ratio A and Z		203041181	
44	1	Gasket	0.3	108010102	GA6010
	1	Gasket	0.5	108010004	GA6015
	1	Gasket	1	108010103	GA6032
45	6	Stud L=50 mm, sealed	M10-1x25/ 3/8"-16Hx17	117020094	ST094

PTO 3200 series SAE "B" 2/4 BOLT PNEUMATIC SHIFT

46	1	Set screw	M6x12	117010009	AS008
47	1	Copper washer	30x37	102060010	WA010
48	1	Plug	M30x1.5	208020731	PL731
49	1	Adjusting bush		200014841	PN841
50	1	Adjusting nut		200014851	PN851
51	1	Axial disc AS 2035	20x35x1	114010008	WA008
52	2	Conical bearing 32304	20x52x22.25	113300023	RB023
53	1	Snap ring WRE	Ø55	101100001	SR001
54	1	Upper gear		Table 2	TABLE 2
55	1	Input gear		Table 1	TABLE 1
56	2	O-ring	Ø15x2.5	107100030	OR022
57	1	Pressure swicht		9015399	
58	1	Conical bearing 30204	20x47x15.25	113300035	RB035
59	1	Input gear ("B" Ratio only)	Z=35	Table 3	TABLE 3
60	2	Bearing	20x30x30	113010003	RB003
61	1	Spacer		209013491	SP491
62	1	Upper gear ("A" and "Z" Ratios)		Table 3	TABLE 3
63	2	Antifriction washer		211013431	WA431



PTO 3200 SERIES

DESCRIPTION	CODE	<i>PTO 3200 SERIES</i> SAE A
<i>CONVERSION KIT TO SAE "A"</i>	<i>803235</i>	

ITEM	QT.	DESCRIPTION	DIMENS.	CODE	BZ USA CODE
1	1	Output shaft SAE 9 teeth		203037701	
2	2	O-ring (VITON)	40x2	107100031	
3	1	Snap ring DIN 472	Ø45	101010007	
4	1	O-ring	115x3	107010100	
5	1	Adapter housing		202124951	
6	1	Seal BAFSL	45x75x10	112090009	
7	1	Snap ring DIN 472	Ø75	101020014	
8	1	Gasket		108010113	
9	2	Washer DIN 125	10.5x16,8x2	102090010	
10	2	Screw DIN912 12.9 sealed	3/8x30	116010097	

PTO 3200 SERIES.

TABLE 1 INPUT GEAR

CODE PTO #	GEAR BOX	INPUT GEAR Z=35
...01...	FULLER SERIES	R/675
...02...	UNIVERSAL	R/683
...03...	SPICER	R/736
...05...	SPICER	R/677
...06...	FULLER (TREMEC)	R/679
...07...	NAVISTAR	R/693
...08...	SPICER	R/682
...09...	SPICER	R/684
...10...	CHEVY	R/678
...11...	CHEVY / SPICER	R/699
...13...	NEW PROCESS	R/718
...14...	FULLER	R737
...15...	EATON / FULLER FS-4005 C/ 4205 C	R/717
...16...	ZF	R/716
...17...	EATON 6305 A	R/680
...18...	EATON FS 3005 / 4005 AB	R/681
...20...	DODGE	R/701
...21...	ZF S5-42 / 5.72	R/676
...22...	EATON / FULLER	R/738
...23...	EATON / FULLER FS-3005 B	R/714
...24...	MACK	R/695
...25...	EATON / FULLER FS 7206 A	R/715
...27...	EATON / FULLER	R/692
...28...	FULLER	R/771
...30...	EATON / FULLER	R/698
...33...	SPICER	R/697
...34...	SPICER	R/696
...36...	NEW PROCESS	R/739
...42...	FULLER	R/770
...50...	ZF	R/694
...51...	DODGE	R/702
...52...	ZED/F	R/700
...56...	TREMEC	R/744
...57...	ZF	R/740
...61...	FORD	R/754
...66...	FULLER	R/862
...68...	TREMEC	R/897
...69...	MERCEDES	R/931

PTO 3200 SERIES

TABLE 2 PTO RATIO GEAR SET

RATIO	CODE	BOTTOM GEAR	UPPER GEAR Z=35
RATIO "C": 73%	801634	R/836	R/686
RATIO "E": 80%	801734	R/837	R653-2
RATIO "J": 95%	801834	R/838	R/655-2
RATIO "O": 125%	801934	R/839	R/657-2
RATIO "R": 137%	802034	R/840	R/729
RATIO "S" 150%	802134	R/841	R/731
RATIO "T": 165%	802234	R/842	R/659-2

TABLE 3

	BOTTOM GEAR	DOUBLE INPUT GEAR	CODE PTO	GEAR BOX
RATIO "Z": 40% CODE : 803534..	R/843	R/844	...01...	FULLER SERIES
RATIO "A": 50% CODE : 803334..	R/813	R/735	...01...	FULLER SERIES
RATIO "B": 55% CODE :803434..	R/812	R/706	...01...	FULLER SERIES
		R/726	...02...	UNIVERSAL
		R/756	...24...	MACK

TABLE 4 OUTPUT SHAFT

SHAFT TYPE	SHAFT CODE	REFERENCE	KEY CODE
SHAFT Ø1 ¼" RND 5/16" KEY	203014841	E/484	106040002
SHAFT Z= 13 T	203034661	E/466	
SHAFT Z= 15 T	203034891	E/489	



PTO 3200 USA CODING



SERIE:
3200.- 6 BOLT CLUTCH PTO

VERSIONS:
X.- STANDARD.
P.- GREASABLE IDLER SHAFT.

RATIO:

B	1:0.55	R	1:1.37
C	1:0.73	S	1:1.50
E	1:0.80	T	1:1.65
J	1:0.95	Z	1:0.40
O	1:1.25		

SHIFTER TYPE:
N = AIR WITHOUT 101 AIR KIT
S = AIR WITH 126 AIR KIT
T = AIR WITH 127 AIR KIT
U = AIR KIT WITH 128 AIR KIT
A = AIR WITH 101 AIR KIT

OUTPUT TYPE:
IA = ISO 4 BOLT
FA = FLANGE SAE 1100
FB = FLANGE SAE 1300
FC = FLANGE SAE 1400
FD = FLANGE DIN 100
RA = SAE "B" 2/4 BOLT 13T. ROTATABLE
RB = SAE "BB" 2/4 BOLT 15T. ROTATABLE
SE = SAE TYPE 1 1/4" ROUND SHAFT.
SG = SAE TYPE 1 1/2" ROUND SHAFT.

MOUNTING POSITION:
 1.- RIGHT, FORWARD
 3.- LEFT, FORWARD

INPUT GEAR: (Z=35)*

01 = FULLER SERIES (R/675)	17 = EATON 6305 A (R/680)	39 = WARNER (R/741)
02 = UNIVERSAL (R/683)	18 = EATON FS 3005 /4005 AB (R/681)	41 = WARNER (R/743)
03 = SPICER (R/736)	20 = DODGE (R/701)	42 = FULLER (R/770)
05 = SPICER (R/677)	21 = ZF S5-42/5.72 (R/676)	50 = ZF (R/694)
06 = FULLER(TREMEC) (R/679)	22 = EATON/FULLER (R/738)	51 = DODGE (R/702)
07 = NAVISTAR (R/693)	23 = EATON/FULLER FS-3005 B (R/714)	52 = ZED / F (R700)
08 = SPICER (R/682)	24 = MACK (R/695)	55 = MACK/RENAULT (R/748)
09 = SPICER (R/684)	25 = EATON/FULLER FS 7206 A (R/715)	57 = ZF (R/740)
10 = CHEVY (R/678)	27 = EATON / FULLER (R/692)	61 = FORD (R/754)
11 = CHEVY / SPICER (R/699)	28 = FULLER (R/771)	66 = FULLER (R/862)
13 = NEW PROCESS (R/718)	30 = EATON / FULLER (R/698)	68 = TREMEC (R/897)
14 = FULLER (R/737)	33 = SPICER (R/697)	
15 = EATON/FULLER FS-4005C/4205C (R/717)	34 = SPICER (R/696)	
16 = ZF (R/716)	36 = NEW PROCESS (R/739)	

