

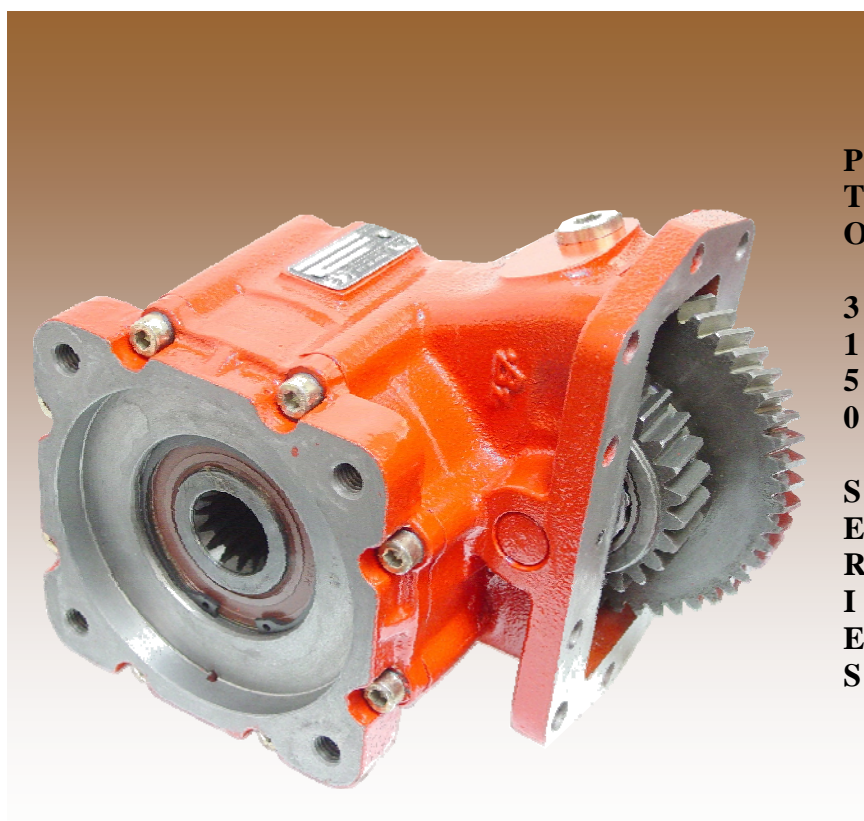
BZ

bezaresusa

PTO 3150 SERIES

SAE "C" CONSTANT MESH

PART LIST



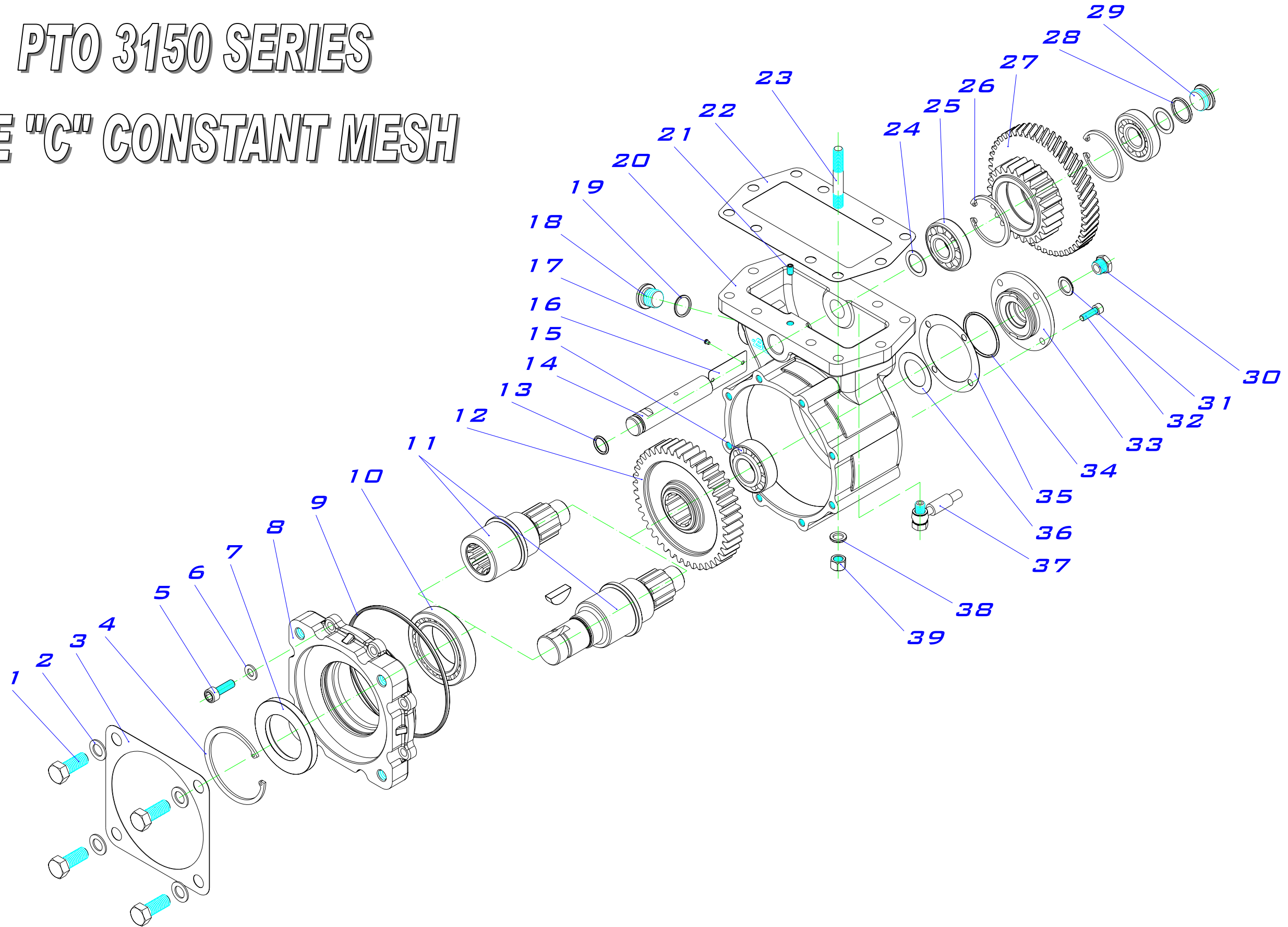
P
T
O

3
1
5
0

S
E
R
I
E
S

PTO 3150 SERIES

SAE "C" CONSTANT MESH



PTO 3150 Series SAE "C" CONSTANT MESH

ITEM	QT.	DESCRIPTION	DIMENS.	CODE	BZ USA Part #
1	4	Screw DIN 931, hex head	½" 13 UNC x 32	116020025	CS025
2	4	Washer DIN 125	Ø13	102010002	WA002
3	1	Gasket		108010129	GA129
4	1	Snap ring DIN 472	Ø80	101020015	SR015
5	8	Screw allen head DIN 912	M8 x 25	116010009	AS009
6	8	Washer DIN 125	Ø8	102010001	WA001
7	1	Oil seal	50 x 80 x 8	112110007	SE011
8	1	Adapter cover		202121361	AC361
9	1	O-ring	134.5 x 3	107010112	OR112
10	1	Conical bearing 32010X	50 x 80 x 20	113300021	RB021
11	1	Shaft		Table 2	TABLE 2
12	1	Output gear		Table 1	TABLE 1
13	1	O-ring	15 x 2.5	107010022	OR022
14	1	Idler shaft, pin		203043391	IP391
15	1	Conical bearing 32205 B	25x52x19.25	113300022	RB022
16	1	Identification plate		126020001	PL001
17	2	Rivet	3x4	100050001	RI001
18	1	Allen plug	M18	208020242	AP242
19	1	Washer DIN 125	Ø18	102060017	WA017
20	1	Housing 10 bolt		202018912	HS3150
21	1	Set screw DIN 913	M6x10	117010006	SS006
22	1	Gasket 10 bolt	0.5 mm	108010081	GA081
	1	Gasket 10 bolt	0.3 mm	108010121	GA121
	1	Gasket 10 bolt	1 mm	108010122	GA122
23	10	Stud DIN 833 L= 50 mm	M10-100/150	117020055	ST055
24	2	Fitting washer DIN 988	20x28x1	103010021	WA021
25	2	Conical bearing 30304A, idler shaft	20x52x16.25	113300002	RB002
26	2	Snap ring DIN 472	Ø52	101020007	SR007
27	1	Input gear		Table 1	TABLE 1
28	1	Aluminium washer	Ø22	102050003	WA003
29	1	Shaft plug		118020021	PL021
30	1	Plug	¼" BSP	118020013	PL013
31	1	Copper Washer	14x20	102060016	WA016
32	4	Screw DIN 912 8,8, allen head	M6x20	116010003	AS003
33	1	End cover		208011542	EC542
34	1	O-ring	44x2.62	107100061	OR070
35	*	Gasket (according to adjust)		108010117	GA117
	*	Gasket (according to adjust)		108010118	GA118
36	*	Fitting washer DIN 988	50x62x0.1	103010032	WA032
37	1	Pressure lube hose, MD/HD series		900899	PLH899
38	10	Washer DIN 125	10.5x16.8x2	102090010	WA010
39	10	Special nut hex. 14	M10-100	119010001	NU001

TABLE 1 PTO 3150 SERIES CONSTANT MESH, RATIO GEAR SET

PTO	RATIO	INPUT GEAR	Z		OUTPUT GEAR	Z
			SM. CLUSTER	LG. CLUSTER		
ALLISON 10 BOLT 3150 series	RATIO "B": 52 %	R/772	23	49	R/845	44
	RATIO "C": 60 %	R/774	25	49	R/799	42
	RATIO "E": 68 %	R/776-1	27	49	R/797	40
	RATIO "G": 81 %	R/810	30	49	R/914	37
	RATIO "J": 86 %	R/800	31	49	R/847	36
	RATIO "M": 97 %	R/778	33	49	R/848	34
	RATIO "O": 118 %	R/802	36	49	R/849	31

TABLE 2 OUTPUT SHAFT

SHAFT TYPE	SHAFT CODE	REFERENCE	KEY CODE
SHAFT Ø1 ¼" RND 5/16" KEY	203014821	E/482	106040002
SHAFT Z= 14 T	203024601	E/460	—————



PTO 3100 / 3250 USA CODING

3100 **X** **B** **N** **63** **3** **RA**

SERIES:
 3100.- Allison 10 bolts
 3150.- Allison 10 bolts, Constant Mesh
 3250 - Allison 10 h. reduced housing

VERSIONS:
 X.- STANDARD.
 P.- GREASEABLE IDLER SHAFT.

RATIO:

3100 SERIES						
B	C	E	G	J	M	O
52%	60%	68%	81%	86%	97%	118%

3250 SERIES				
B	C	E	J	M
(55%)	(63%)	(73%)	(84%)	(110%)

SHIFTING:
 N = AIR.
 E = ELECTRIC 12V. OVER HIDRAULIC.
 F = ELECTRIC 24V. OVER HIDRAULIC.
 M = CONSTANT MESH (*)

*.- LA SERIE 3100 TOMA CONSTANTE SE DENOMINA SERIE 3150
 PTO 3100 SERIES CONSTANT MESH WAS NAMFD 3150 SERIES

INPUT GEAR:
 63 = ALLISON 3100 / 3250 SERIES

OUTPUT TYPE:
IA = ISO 4 BOLT
FA = FLANGE SAE 1100
FB = FLANGE SAE 1300
FC = FLANGE SAE 1400
FD = FLANGE DIN 100
RA= SAE "B" 2/4 BOLT 13T. ROTATABLE
RJ= SAE C. 4 BOLT (ONLY 3100/3150 SERIES)
SE= SAE TYPE 1 ¼" ROUND SHAFT.
SG= SAE TYPE 1 ½" ROUND SHAFT.

ASSEMBLY ARRANGEMENTS:

1.- RIGHT, FORWARD
 3.- LEFT, FORWARD

POS.	3100	3250
1		●
3	●	●

