



PTO 3000 SERIES

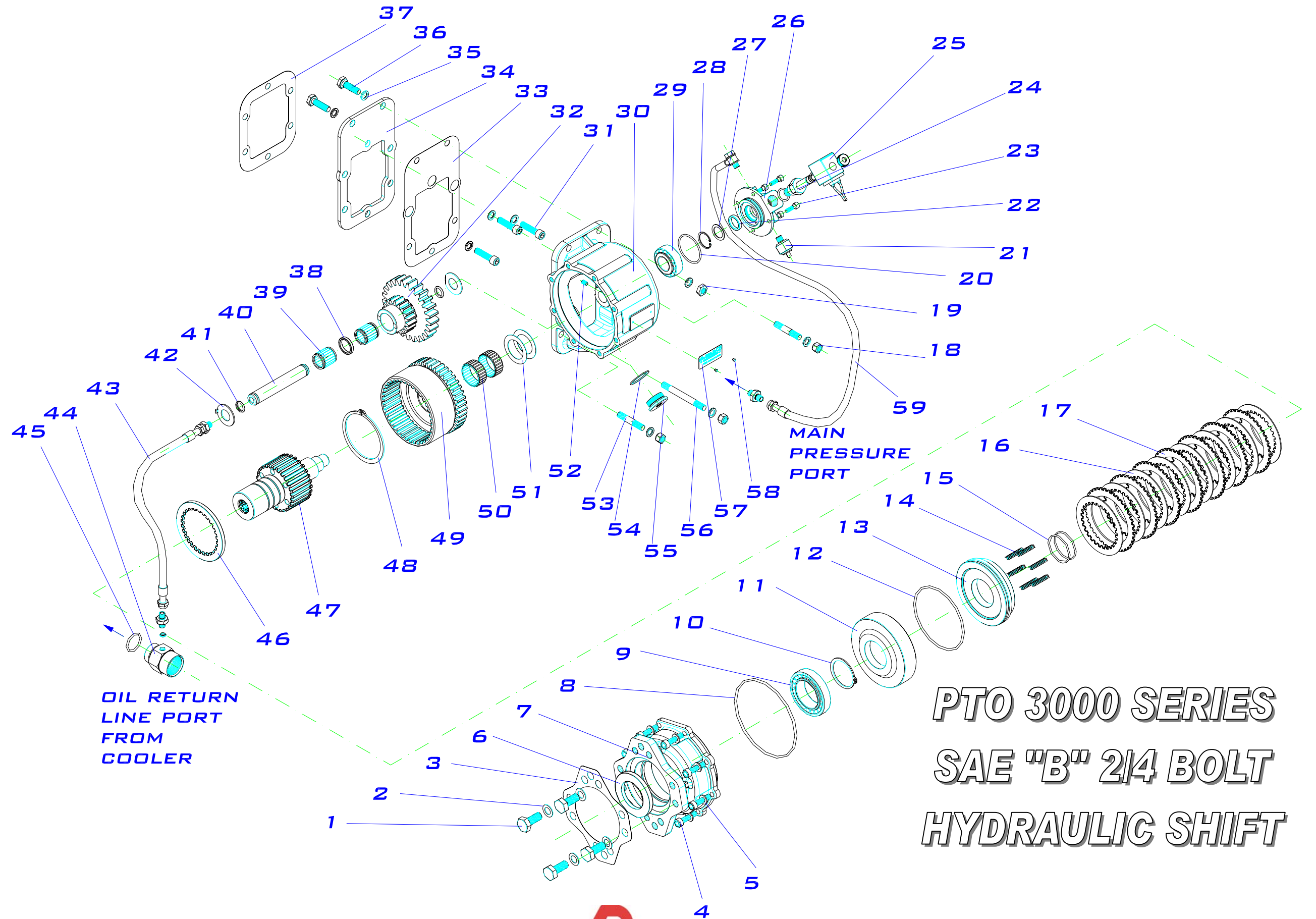
PART LIST



P
T
O

3
0
0
0

S
E
R
I
E
S



**PTO 3000 SERIES
SAE "B" 2/4 BOLT
HYDRAULIC SHIFT**

PTO 3000 Series SAE "B" 2/4 Bolt Hydraulic shift

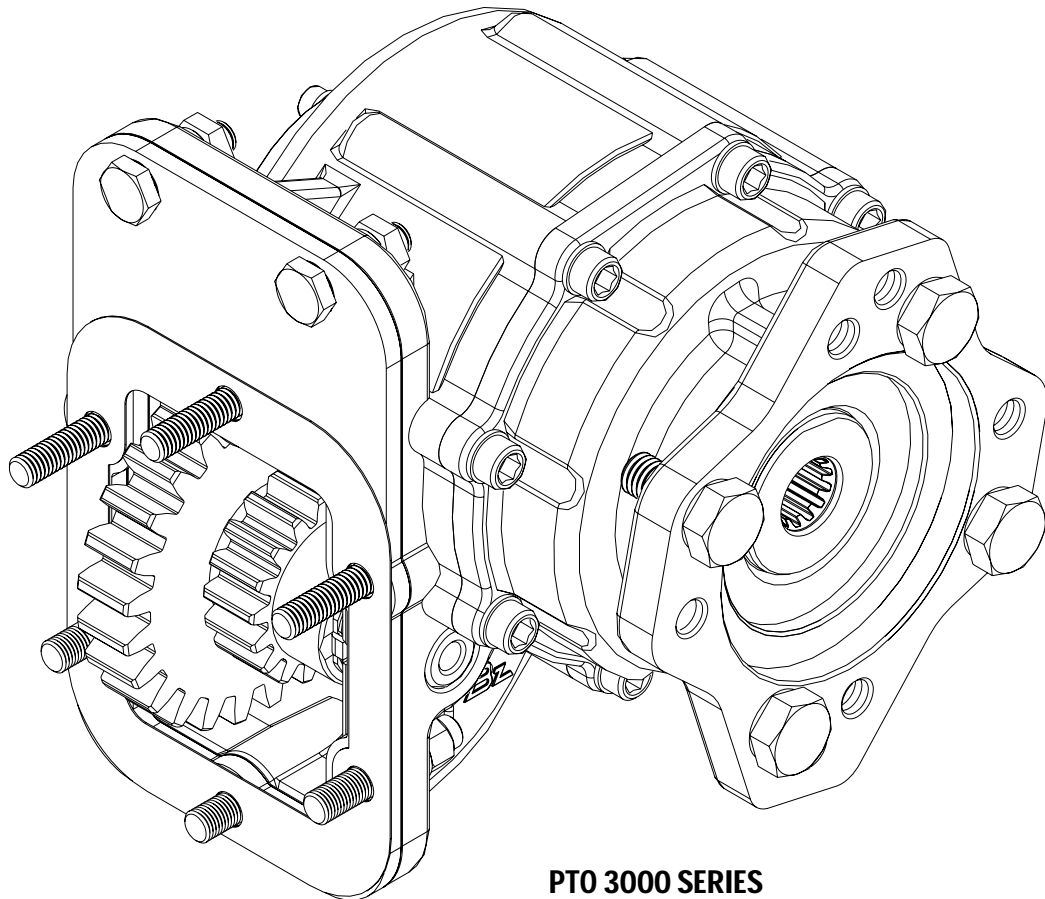
| ITEM | QT. | DESCRIPTION | DIMENS. | CODE | BZ USA Part # |
|------|-----|------------------------------------|-----------------|-----------|---------------|
| 1 | 4 | Screw DIN 931, hex head | ½" 13 UNC x 32 | 116020025 | CS025 |
| 2 | 4 | Washer DIN 125 | Ø13 | 102010002 | WA002 |
| 3 | 1 | Gasket | | 108010091 | GA091 |
| 4 | 8 | Screw allen head DIN 912 | M8 x 25 | 116010009 | AS009 |
| 5 | 8 | Washer DIN 125 | Ø 8 | 102010001 | WA001 |
| 6 | 1 | Oil seal (VITON) | 50 x 80 x 8 | 112110007 | SE011 |
| 7 | 1 | Housing flange, open end | | 202100311 | FL311 |
| 8 | 1 | O-ring | 134.5 x 3 | 107010112 | OR112 |
| 9 | 1 | Conical bearing 32010X | 50 x 80 x 20 | 113300021 | RB021 |
| 10 | 1 | Snap ring DIN 471 | Ø 50 | 101010009 | SR009 |
| 11 | 1 | Clutch back-up cylinder | | 202029181 | CC181 |
| 12 | 1 | O-ring (VITON) | 110 x 3 | 107100013 | OR052 |
| 13 | 1 | Piston | | 204010481 | PI481 |
| 14 | 6 | Spring | | 109010019 | SP019 |
| 15 | 2 | O-ring (VITON) | 46 x 2 | 107100014 | OR052 |
| 16 | 8 | Friction disc | | 100110001 | FD001 |
| 17 | 7 | Clutch plate | | 100110002 | CP002 |
| 18 | 3 | Special nut hex. 14 | M10 | 119010001 | NU001 |
| 19 | 2 | Nut DIN 934 8.8 | M10 – 1.5 | 119070004 | NU004 |
| 20 | 1 | O-Ring NBR70 | 44x2.62 | 107100061 | OR070 |
| 21 | 1 | Hydraulic pressure switch on | 1/8" BSP | 900999 | SW999 |
| 22 | 1 | Collar (VITON) | 20x26x4.8 | 105090001 | BU001 |
| 23 | 4 | Screw DIN 912 8.8 allen head | M6x20 | 116010122 | AS112 |
| 24 | 1 | Electromagnet cartridge | | 9049490 | CO490 |
| 25 | 1 | Coil for electrovalve 12 V.DC | | 9049590 | CO590 |
| 26 | 1 | Cover Hydraulic Allison M | | 208012081 | HA081 |
| 27 | 1 | Washer PS 20x28x1 | 20x28x1 | 103010021 | WA021 |
| 28 | 1 | Snap ring DIN 472 | Ø28 | 101020028 | SR028 |
| 29 | 1 | Conical bearing 32205, cover | 25 x 52 x 19.25 | 113300022 | RB022 |
| 30 | 1 | Housing 6 bolt | | 202110342 | HS3000 |
| 31 | 3 | Screw DIN 912 12.9, allen head | 3/8" x 25 UNC | 116010067 | AS067 |
| 32 | 1 | Input gear | | Table 1 | TABLE 1 |
| 33 | 1 | Gasket | | 108010109 | GA109 |
| 34 | 1 | Adapter plate assembly 6 bolt | | 209100411 | AP411 |
| 35 | 10 | Washer DIN 125 | 10.5 x 16.8 x 2 | 102090010 | WA010 |
| 36 | 2 | Screw DIN 933 8.8 | M10 – 1.5 x 35 | 116030017 | CS017 |
| 37 | * | Gasket, 6 bolt | 0.5 mm | 108010004 | GA6015 |
| | * | Gasket, 6 bolt | 0.3 mm | 108010102 | GA6010 |
| | * | Gasket, 6 bolt | 1 mm | 108010103 | GA6032 |
| 38 | 1 | Spacer, idler shaft | | 209013491 | SP491 |
| 39 | 2 | Needle bearing | 20 x 30 x 30 | 113010003 | RB003 |
| 40 | 1 | Idler shaft, pin | | 203044001 | IP181 |
| 41 | 2 | O-ring | 15 x 2.5 | 107100030 | OR022 |
| 42 | 2 | Antifriction washer | | 211013431 | WA431 |
| 43 | 1 | Pressure lube hose, Allison series | | 9018399 | PLH399 |

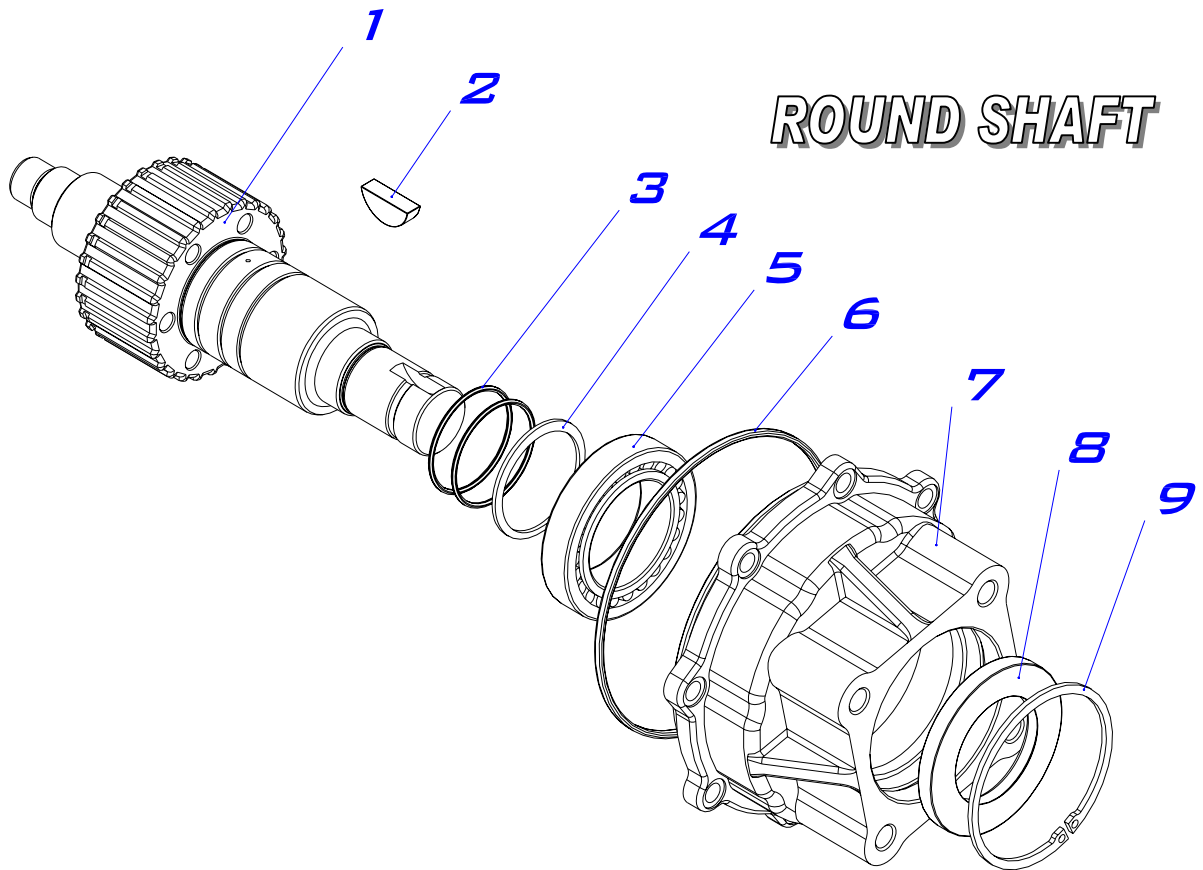
PTO 3000 Series SAE "B" 2/4 Bolt Hydraulic shift

| ITEM | QT. | DESCRIPTION | DIMENS. | CODE | BZ USA Part # |
|------|-----|-------------------------------|------------------|-----------|---------------|
| 44 | 1 | "T" fitting for AT 500 series | | 202120511 | FI511 |
| | 1 | "T" fitting for MT 600 series | | 202120401 | FI401 |
| | 1 | "T" fitting for HT 700 series | | 202120521 | FI521 |
| 45 | 1 | O-ring for AT 500 series | Ø15x2.5 | 107010022 | OR022 |
| | 1 | O-ring for MT 600 series | Ø23x3 | 107010075 | OR075 |
| | 1 | O-ring for HT 700 series | Ø29x3 | 107010045 | OR045 |
| 46 | 1 | Toothed washer | | 209019201 | WA201 |
| 47 | 1 | Splined shaft, Z=13 | | 203023881 | OS881 |
| | 1 | Splined shaft, Z=15 | | 203023861 | OS861X |
| 48 | 1 | Snap ring DIN 471 | Ø 85 | 101010029 | SR029 |
| 49 | 1 | Output gear | | Table1 | TABLE 1 |
| 50 | 2 | Needle bearing | 35 x 42 x 18 | 113010015 | SR015 |
| 51 | 2 | Friction washer | 35 x 52 x 1 | 114010002 | WA002 |
| 52 | 1 | Set screw | M6 x 10 | 117010006 | SS006 |
| 53 | 2 | Stud L=55 mm., sealed | M10x25 / 3/8"x17 | 117020097 | ST097 |
| 54 | 1 | Copper washer | 30 x 37 | 102060010 | WA010 |
| 55 | 1 | Plug | M30 x 1.5 | 208020731 | PL731 |
| 56 | 1 | Stud L=95 mm., sealed | M10x23 / 3/8"x17 | 117020095 | ST095 |
| 57 | 1 | Identification plate | | 126020001 | PL001 |
| 58 | 2 | Rivet | 2.4x4 | 100050003 | RI003 |
| 59 | 1 | Lubrication kit | | 9019499 | PLH499 |

TABLE 1 PTO RATIO GEAR SET

| PTO | RATIO | INPUT GEAR | Z | | OUTPUT GEAR | Z |
|----------------------------------|-----------------|------------|-------------|-------------|-------------|----|
| | | | SM. CLUSTER | LG. CLUSTER | | |
| ALLISON 6 BOLT 3000 series | RATIO "B": 33 % | R/707 | 15 | 25 | R/708 | 43 |
| | RATIO "C": 43 % | R/671 | 18 | 25 | R/672 | 41 |
| | RATIO "E": 50 % | R/727 | 19 | 25 | R/728 | 39 |

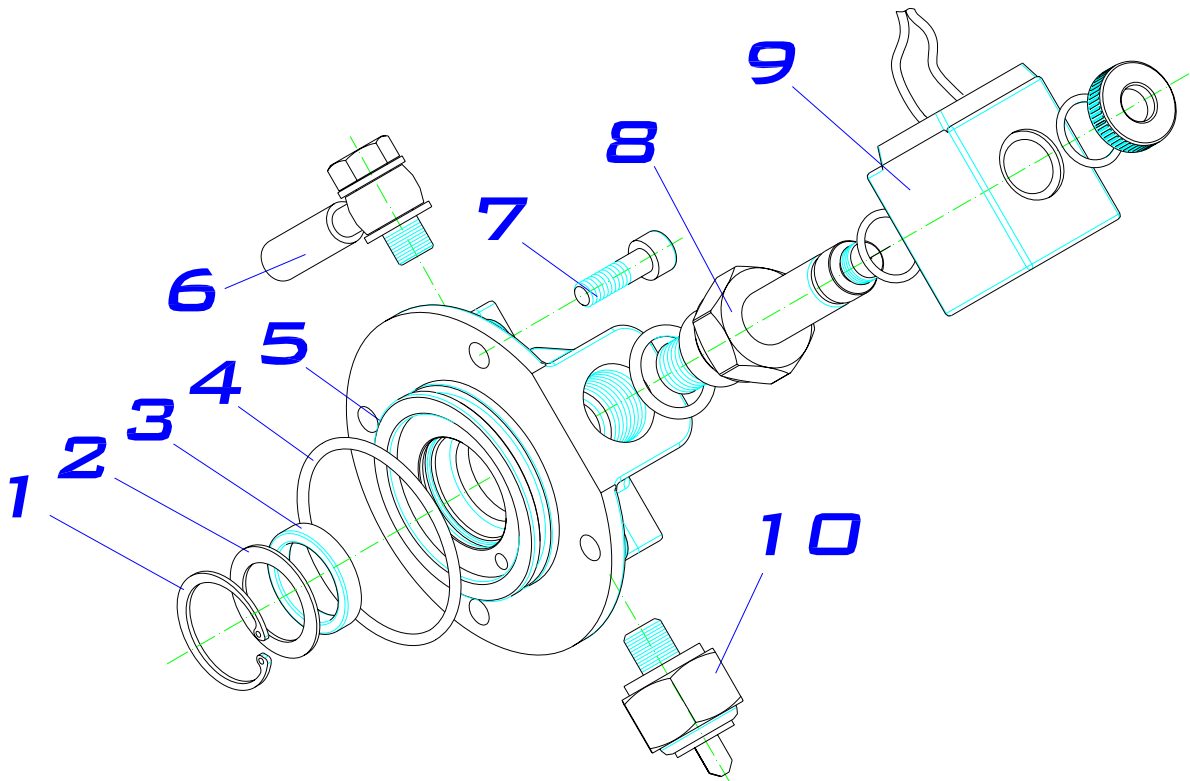




PTO 3000 SERIES

| ITEM | QT. | DESCRIPTION | DIMENS. | CODE | BZ USA Part # |
|------|-----|--|----------------|-----------|---------------|
| 1 | 1 | Output shaft 1-1/4", round shaft mount | | 203014181 | OS181 |
| 2 | 1 | Woodruff key | 1 1/8" x 5/16" | 106040002 | WK002 |
| 3 | 2 | O-ring (VITON) | 46x2 | 107100014 | OR057 |
| 4 | 1 | Snap ring DIN 471 | Ø50 | 101010009 | SR009 |
| 5 | 1 | Conical bearing 32010 X | | 113300021 | RB021 |
| 6 | 1 | O-ring | 134.5x3 | 107010112 | OR112 |
| 7 | 1 | Housing flange, open end | | 202029131 | FL131 |
| 8 | 1 | Seal oil (VITON) | 50x80x8 | 112110007 | SE011 |
| 9 | 1 | Snap ring DIN 472 | Ø80 | 101020015 | SR015 |

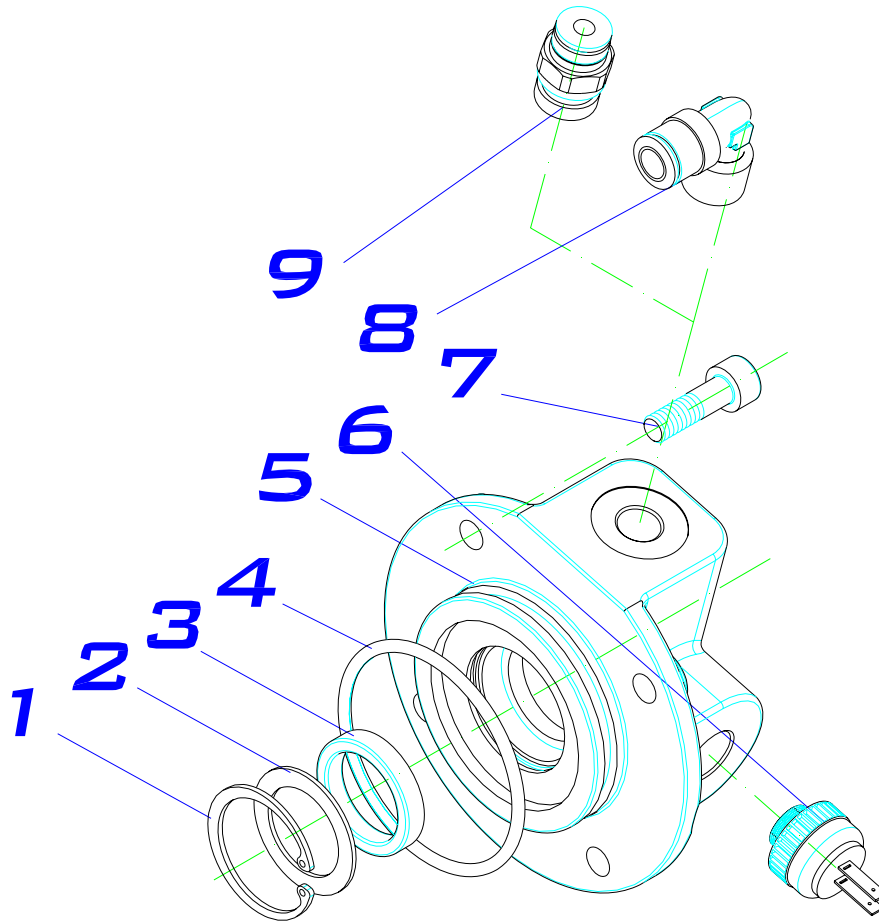
HYDRAULIC SHIFTING KIT. (9035799).



PTO 3000 SERIES

| ITEM | QT. | DESCRIPTION | DIMENS. | CODE | BZ USA Part # |
|------|-----|-------------------------------|-----------|-----------|---------------|
| 1 | 1 | Circlip DIN 472. | Ø28 | 101020028 | SR028 |
| 2 | 1 | Washer PS. | 20x28x1 | 103010021 | WA021 |
| 3 | 1 | Pneumatic collar (VITON). | 20x26x4.8 | 105090001 | BU001 |
| 4 | 1 | O-ring . (NBR 70). | 44x2.62 | 107100061 | OR070 |
| 5 | 1 | Cover hydraulic Allison MD. | | 208012081 | HA081 |
| 6 | 1 | Lubrication kit Allison . | | 9019499 | PLH499 |
| 7 | 4 | Screw DIN 912 8.8 . | | 116010122 | AS122 |
| 8 | 1 | Cartridge 20L. | | 9049490 | CO490 |
| 9 | 1 | Coil for electrovalve 12v .DC | | 9049590 | CO590 |
| 10 | 1 | Hydraulic pressure swcht on. | 1/8" BSP | 900999 | SW999 |

PNEUMATICAL SHIFTING KIT. (909599).



PTO 3000 SERIES

| ITEM | QT. | DESCRIPTION | DIMENS. | CODE | BZ USA Part # |
|------|-----|-----------------------------|-----------|-----------|---------------|
| 1 | 1 | Circlip DIN 472. | Ø28 | 101020028 | SR028 |
| 2 | 1 | Washer PS. | 20x28x1 | 103010021 | WA021 |
| 3 | 1 | Pneumatic collar (VITON). | 20x26x4.8 | 105090001 | BU001 |
| 4 | 1 | O-ring . (NBR 70). | 44x2.62 | 107100061 | OR070 |
| 5 | 1 | Cover pneumatic Allison MD. | | 208012261 | HA081 |
| 6 | 1 | Pressure swicht on. | | 9015399 | SW999A |
| 7 | 4 | Screw DIN 912 8.8 . | | 116010122 | AS112 |
| 8 | 1 | Suction pipe, elbow 90° | ¼ BSP | 9028216 | FI216-E |
| 9 | 1 | Straight connector. | ¼ BSP | 9028116 | FI216-S |

PTO 2300 / 3000 / 3600 USA CODING

2300 **X** **B** **N** **01** **1** **RA**

SERIE:

2300.- Clutch PTO, 6 bolts
 3000.- Allison 6 bolts
 3600.- Clutch PTO, 8 bolts

VERSIONS:

X.- STANDARD.
 P.- GREASABLE IDLER SHAFT.

RATIOS:

| 2300S/3000S/3600S | B (34%) | C (42%) | E (50%) |
|---|----------|----------|---------|
| AT 540 - 543 - 545 | 1: 0.744 | 1: 0.970 | 1:1.076 |
| CLT 740 D-FS, CLT 750-754-754 CR CLBT 750, HT 740-750-750 CRD, HT 750 DB-DR-DRB | 1: 0.982 | 1: 1.280 | 1:1.420 |
| MT 643-644-647, MT 653 DR, MT 654 CR, MTB 643 | 1: 1.056 | 1: 1.376 | 1:1.520 |

SHIFTER TYPE:

N = AIR WITHOUT 101 AIR KIT
S = AIR WITH 126 AIR KIT
T = AIR WITH 127 AIR KIT
U = AIR KIT WITH 128 AIR KIT
A = AIR WITH 101 AIR KIT
H = HYDRAULIC
E = ELECTRIC 12V. OVER HYDRAULIC
F = ELECTRIC 24V. OVER HYDRAULIC
M = CONSTANT MESH

OUTPUT TYPE:

IA = ISO 4 BOLT
FA = FLANGE SAE 1100
FB = FLANGE SAE 1300
FC = FLANGE SAE 1400
FD = FLANGE DIN 100
RA = SAE "B" 2/4 BOLT 13T. ROTATABLE
RJ = SAE C. 4 BOLT
SE = SAE TYPE 1 1/4" ROUND SHAFT.
SG = SAE TYPE 1 1/2" ROUND SHAFT.

MOUNTING POSITION:

- 1.- RIGHT, FORWARD
- 3.- LEFT, FORWARD

INPUT GEAR:

01 = FULLER SERIES
 60 = ALLISON 2300 / 3000 SERIES

