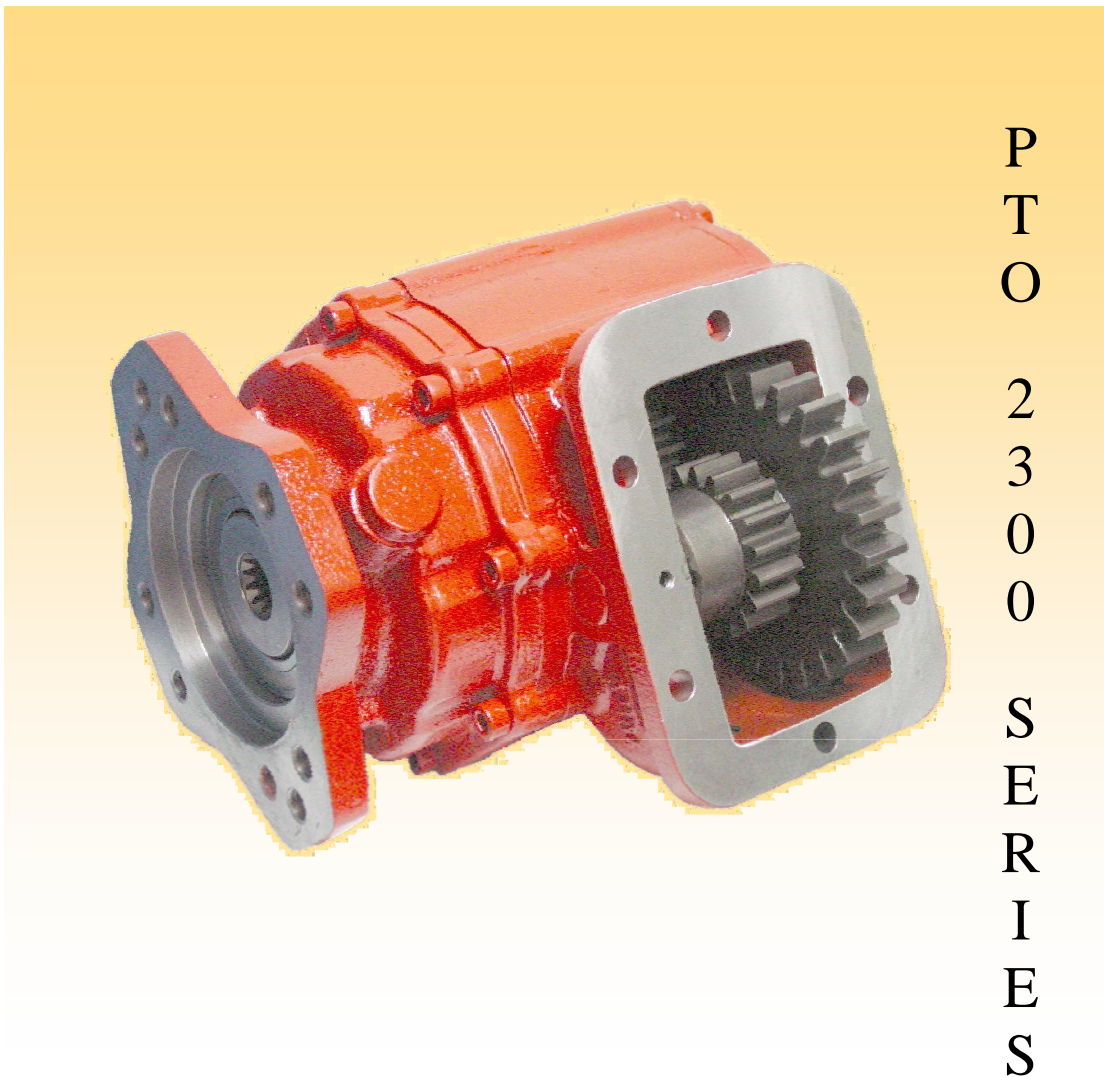




PTO 2300 SERIES

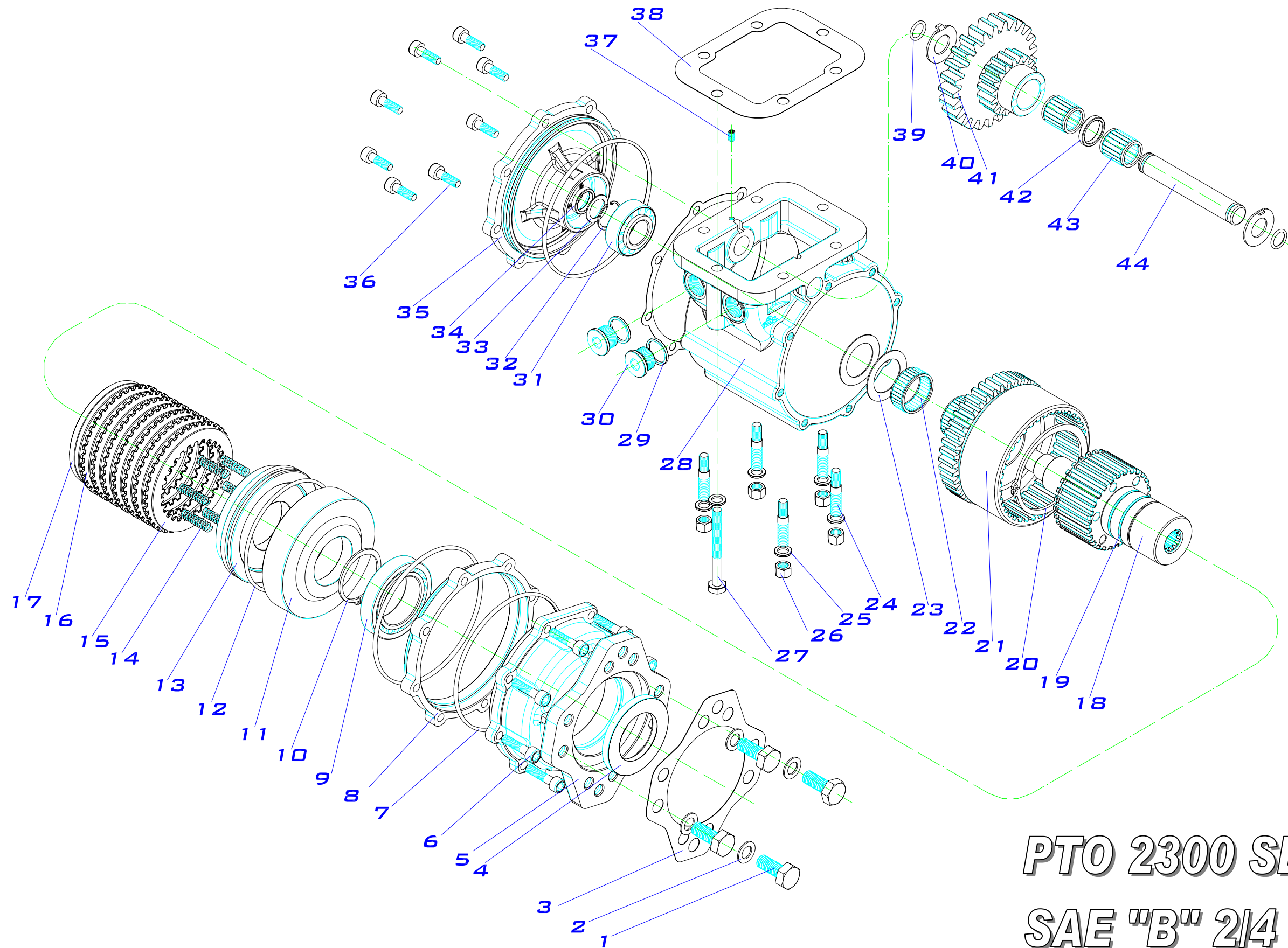
PART LIST



P
T
O

2
3
0
0

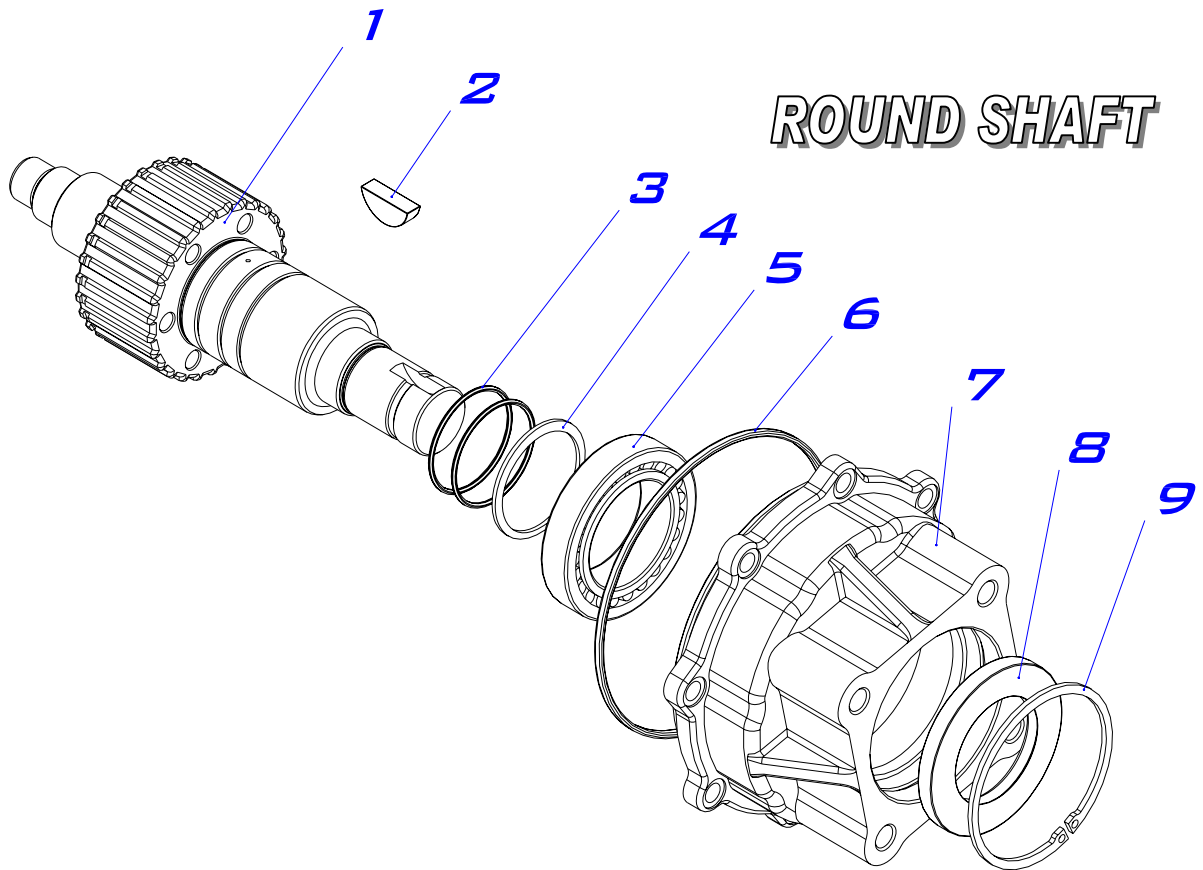
S
E
R
I
E
S



PTO 2300 SERIES
SAE "B" 2 1/4 BOLT

PTO 2300 Series.

ITEM	QT.	DESCRIPTION	DIMENS.	CODE	BZ USA Part #
1	4	Screw DIN 931, hex head	½" 13 UNC x 32	116020025	CS025
2	4	Washer DIN 125	Ø13	102010002	WA002
3	1	Gasket		108010091	GA091
4	1	Oil seal	50 x 80 x 8	112090013	SE011
5	1	Housing flange, open end		202100311	FL311
6	16	Screw allen head DIN 912	M8 x 25	116010009	AS009
7	3	O-ring	134.5 x 3	107010112	OR112
8	1	Spacer flange		209100801	SP801
9	1	Conical bearing 32010 X	50 x 80 x 20	113300021	RB021
10	1	Snap ring DIN 471	Ø50	101010009	SR009
11	1	Clutch back-up cylinder		202029181	CC181
12	1	O-ring (VITON)	110 x 3	107100013	OR052
13	1	Piston		204010481	PI481
14	6	Spring		109010019	SP019
15	8	Friction disc		100110001	FD001
16	7	Clutch plate		100110002	CP002
17	1	Toothed washer		209019201	WA201
18	1	Splined shaft, Z = 13		203023881	OS881
19	2	O-ring (VITON)	46 x 2	107100014	OR057
20	1	Snap ring DIN 471	Ø85	101010029	SR029
21	1	Output gear		Table 1	TABLE 1
22	2	Needle bearing	35 x 42 x 18	113010015	RB015
23	2	Friction washer	35 x 52 x 1	114010002	WA002
24	5	Stud L = 50 mm, sealed	M10-1 x 25 / 3/8"-16H x 17	117020094	ST094
25	6	Washer DIN 125	10.5 x 16.8 x 2	102090010	WA010
26	5	Special nut hex. 14	M10 x 1	119010001	NU001
27	1	Hex. Screw DIN 931 8.8	3/8" x 80	116020002	CS002
28	1	Housing, 6 bolt		202111041	HS2300
29	2	Copper washer	22 x 28 x 1.5	102050003	WA003
30	2	Plug	M22 x 1.5	118020008	PL008
31	1	Conical bearing 32205, cover	25 x 52 x 19.5	113300022	RB022
32	1	Snap ring DIN 472	Ø28	101020028	SR028
33	1	Fitting washer	20 x 28 x 1	103010021	WA021
34	1	Collar	20 x 26 x 4.8	105090001	BU001
35	1	Plug		208012091	PL091
36	8	Screw DIN 912 8.8.	M8x25	116010009	CS009
37	1	Set screw	M6 x 10	117010006	SS006
38	1	Gasket, 6 bolt	0.5 mm	108010004	GA6015
39	2	O-ring	15 x 2.5	107100030	OR022
40	2	Antifriction washer		211013431	WA431
41	1	Input gear		Table 1	TABLE 1
42	1	Spacer idler shaft		209013491	SP491
43	2	Needler bearing	20 x 30 x 30	113010003	RB003
44	1	Idler shaft, pin		203044001	IP181



PTO 2300 SERIES

ITEM	QT.	DESCRIPTION	DIMENS.	CODE	BZ USA Part #
1	1	Output shaft 1-1/4", round shaft mount		203014181	OS181
2	1	Woodruff key	1 1/8" x 5/16"	106040002	WK002
3	2	O-ring (VITON)	46x2	107100014	OR057
4	1	Snap ring DIN 471	Ø50	101010009	SR009
5	1	Conical bearing 32010 X		113300021	RB021
6	1	O-ring	134.5x3	107010112	OR112
7	1	Housing flange, open end		202029131	FL131
8	1	Seal oil (VITON)	50x80x8	112110007	SE011
9	1	Snap ring DIN 472	Ø80	101020015	SR015

PTO 2300 SERIES

TABLE 1 PTO RATIO GEAR SET

RATIO	INPUT GEAR	OUTPUT GEAR
RATIO "B": 33 %	<i>R/707</i>	<i>R/708</i>
RATIO "C": 43 %	<i>R/671</i>	<i>R/672</i>
RATIO "E": 50 %	<i>R/727</i>	<i>R/728</i>

PTO 2300 / 3000 / 3600 USA CODING

2300 **X** **B** **N** **01** **1** **RA**

SERIE:

2300.- Clutch PTO, 6 bolts
 3000.- Allison 6 bolts
 3600.- Clutch PTO, 8 bolts

VERSIONS:

X.- STANDARD.
 P.- GREASABLE IDLER SHAFT.

RATIOS:

2300S/3000S/3600S	B (34%)	C (42%)	E (50%)
AT 540 - 543 - 545	1: 0.744	1: 0.970	1:1.076
CLT 740 D-FS, CLT 750-754-754 CR CLBT 750, HT 740-750-750 CRD, HT 750 DB-DR-DRB	1: 0.982	1: 1.280	1:1.420
MT 643-644-647, MT 653 DR, MT 654 CR, MTB 643	1: 1.056	1: 1.376	1:1.520

SHIFTER TYPE:

N = AIR WITHOUT 101 AIR KIT
S = AIR WITH 126 AIR KIT
T = AIR WITH 127 AIR KIT
U = AIR KIT WITH 128 AIR KIT
A = AIR WITH 101 AIR KIT
H = HYDRAULIC
E = ELECTRIC 12V. OVER HYDRAULIC
F = ELECTRIC 24V. OVER HYDRAULIC
M = CONSTANT MESH

OUTPUT TYPE:

IA = ISO 4 BOLT
FA = FLANGE SAE 1100
FB = FLANGE SAE 1300
FC = FLANGE SAE 1400
FD = FLANGE DIN 100
RA = SAE "B" 2/4 BOLT 13T. ROTATABLE
RJ = SAE C. 4 BOLT
SE = SAE TYPE 1 1/4" ROUND SHAFT.
SG = SAE TYPE 1 1/2" ROUND SHAFT.

MOUNTING POSITION:

- 1.- RIGHT, FORWARD
- 3.- LEFT, FORWARD

INPUT GEAR:

01 = FULLER SERIES
 60 = ALLISON 2300 / 3000 SERIES

