



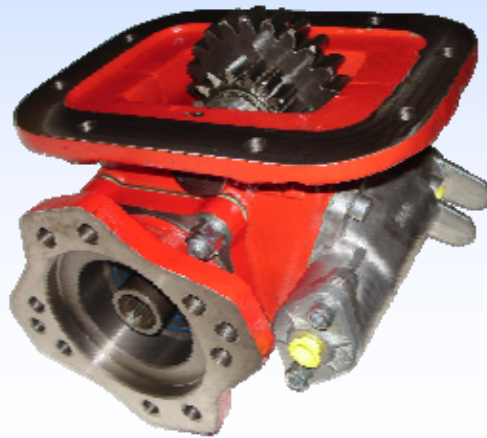
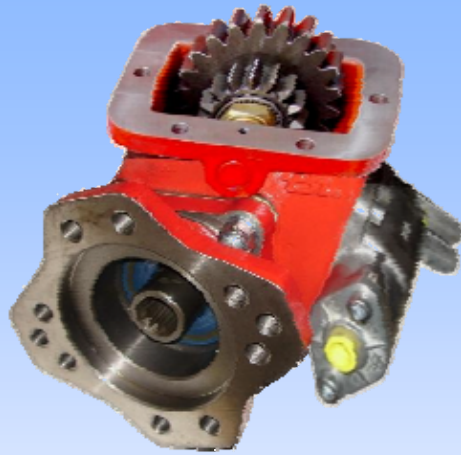
PTO 1000 & 2000 SERIES

PART LIST

P
T
O

1
0
0
0

S
E
R
I
E
S



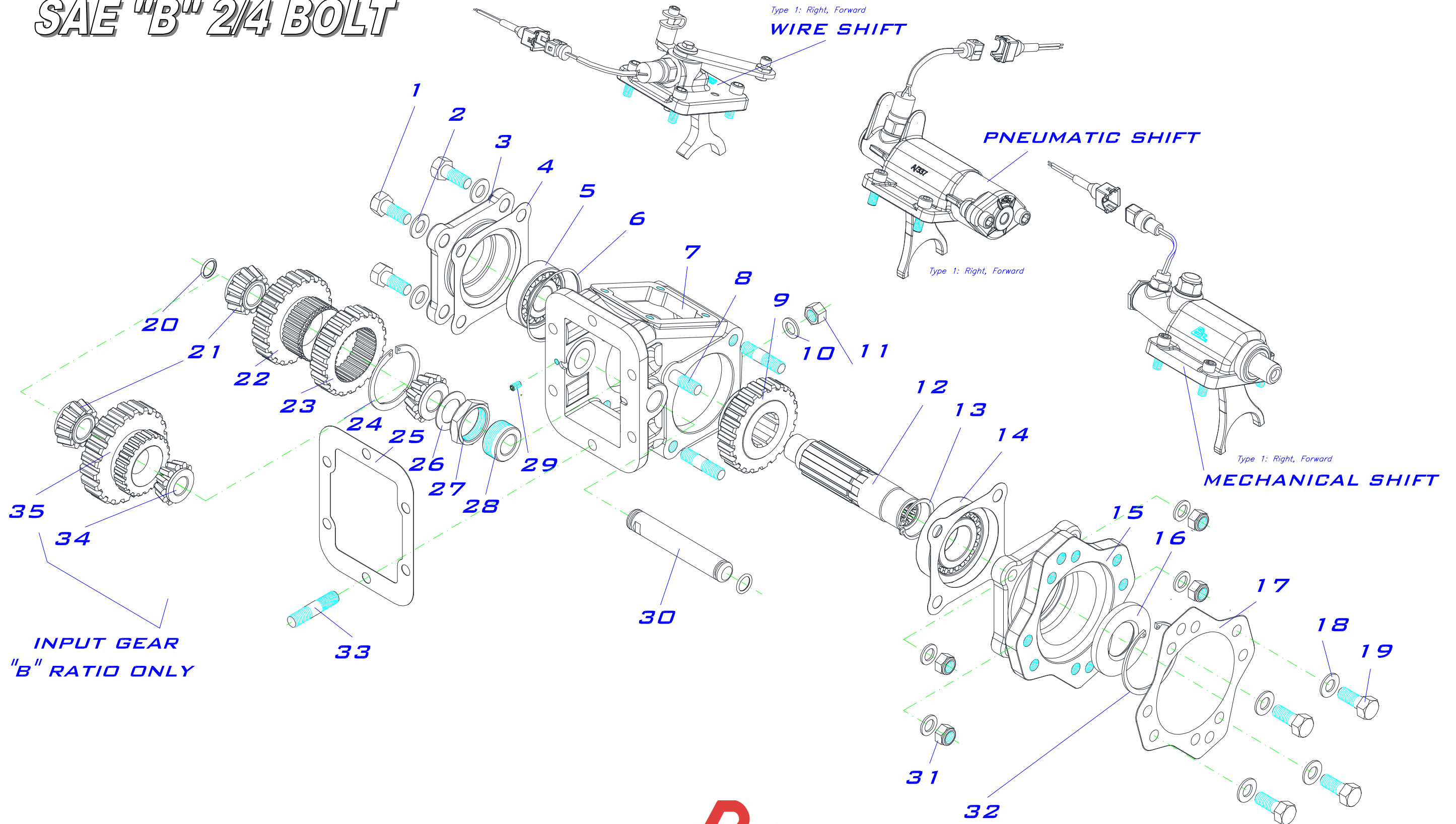
P
T
O

2
0
0
0

S
E
R
I
E
S

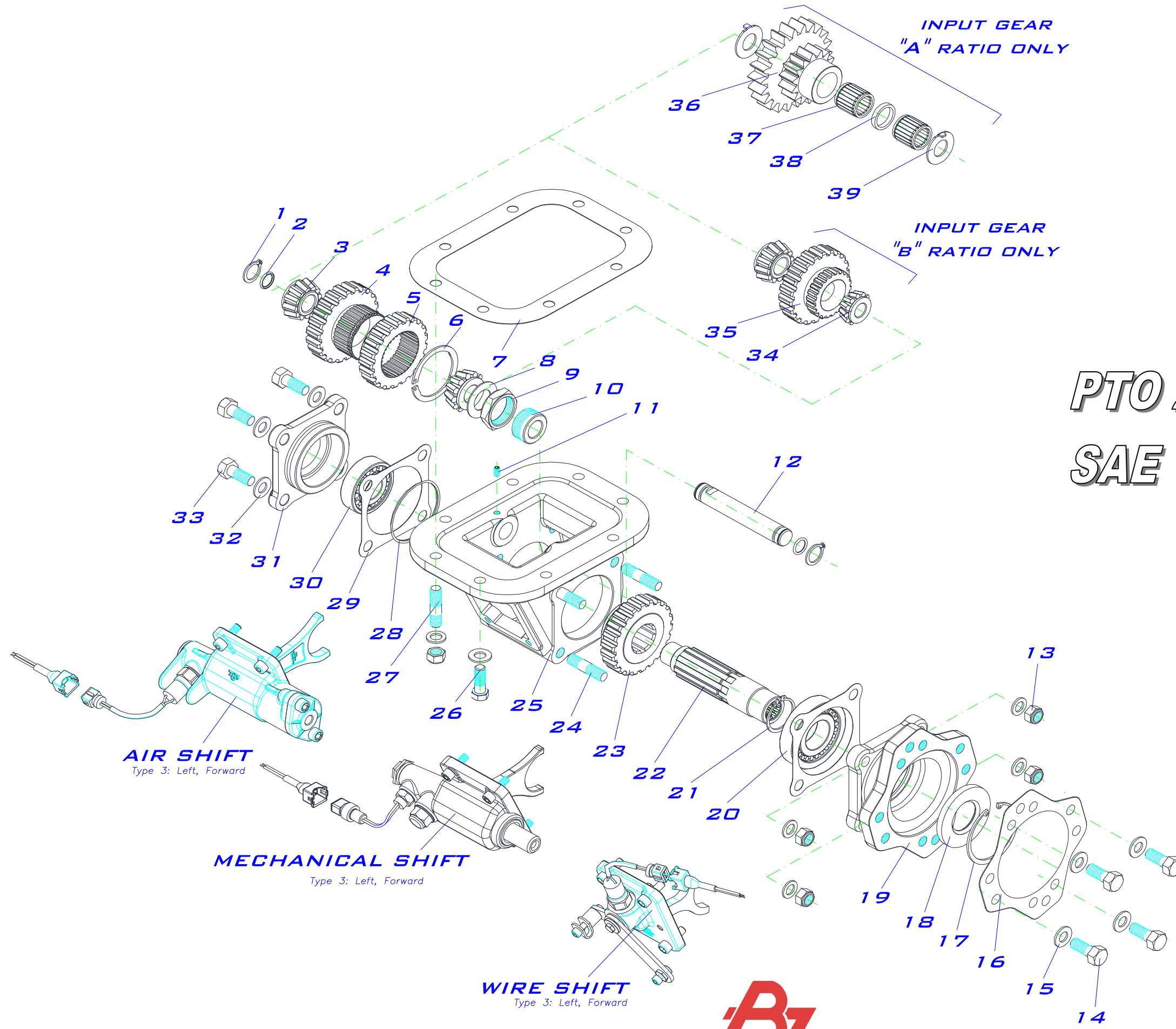
PTO 1000 SERIES

SAE "B" 2/4 BOLT



PTO 1000 & 1010 Series SAE "B" 2/4 Bolt

ITEM	QT.	DESCRIPTION	DIMENS.	CODE	BZ USA PART
1	4	Screw DIN 933 8.8, hex head	M12 x 30	116030012	
2	8	Washer DIN 125	12.5 x 20 x 2	102090009	WA009
3	1	Cover, closed end		208010931	EC931
4	2	Gasket		108010038	GA4015EC
5	1	Conical bearing 30305 A	25 x 62 x 18.25	113300003	RB003
6	1	O-ring (VITON)	75 x 2.5	107100044	OR093
7	1	Housing 6 hole, PTO 1000 series		202110421	HS1000
	1	Housing 6 hole, PTO 1010 series		202110422	HS1010
8	4	Stud (14/21)	M12-175 x 49	117020096	ST096
9	1	Bottom gear		Table 2 & 4	TABLE 2 & 4
10	6	Washer DIN 125	10.5 x 16.8 x 2	102090010	WA010
11	6	Special hex nut	M10-100	119010001	NU001
12	1	Output shaft, mount pump		Table 3	TABLE 3
13	1	Snap ring DIN 471	Ø 35	101010005	SR005
14	1	Conical bearing 30307A	35 x 80 x 22.75	113300004	RB004
15	1	Housing flange, open end		202120911	FL904X
16	1	Oil seal BA SL (VITON)	35 x 72 x 10	112090030	
17	1	Gasket 2/4 bolt		108010091	GA091
18	4	Washer DIN 125	Ø 13	102010005	
19	4	Screw DIN 931 UNC, hex head	½" x 32 13h	116020025	CS025
20	2	O-ring (VITON)	15 x 2.5	107100030	OR022
21	2	Conical bearing 32304 A	20 x 52 x 22.25	113300023	RB023
22	1	Input gear		Table 1	TABLE 1
23	1	Upper gear		Table 2	TABLE 2
24	1	Snap ring WRE	Ø 55	101100001	SR001
25	*	Gasket 6 bolt	Spe = 0.5 mm	108010004	GA6015
	*	Gasket 6 bolt	Spe = 0.3 mm	108010102	GA6010
	*	Gasket 6 bolt	Spe = 1 mm	108010103	GA6020
26	1	Axial disc AS 2035.	20x35x1	114010008	WA008
27	1	Adjusting nut		214115631	
28	1	Adjusting bush		200115621	
29	1	Stud DIN 913, standard mount	M6 x 12	117010009	ST009
	1	Stud DIN 913, deep mount	M6 x 6	117010008	ST008
30	1	Idler shaft, standard		203042531	IP531
31	4	Hex nut DIN 985, self locking	M12 – 175	119020003	NU003
32	1	Circlip DIN 242	Ø 70	101020012	
33	6	Stud L=50 mm, standard mount	M10x25 / 3/8"x17	117020094	ST094
	6	Stud L=45 mm, deep mount	M10x25 / 3/8"x17	117020003	ST003
34	1	Conical bearing 30204 A, "B" ratio only	20 x 47 x 15.25	113300035	RB035 "B" RATIO ONLY
35	1	Input gear, "B" ratio only		Table 4	TABLE 4

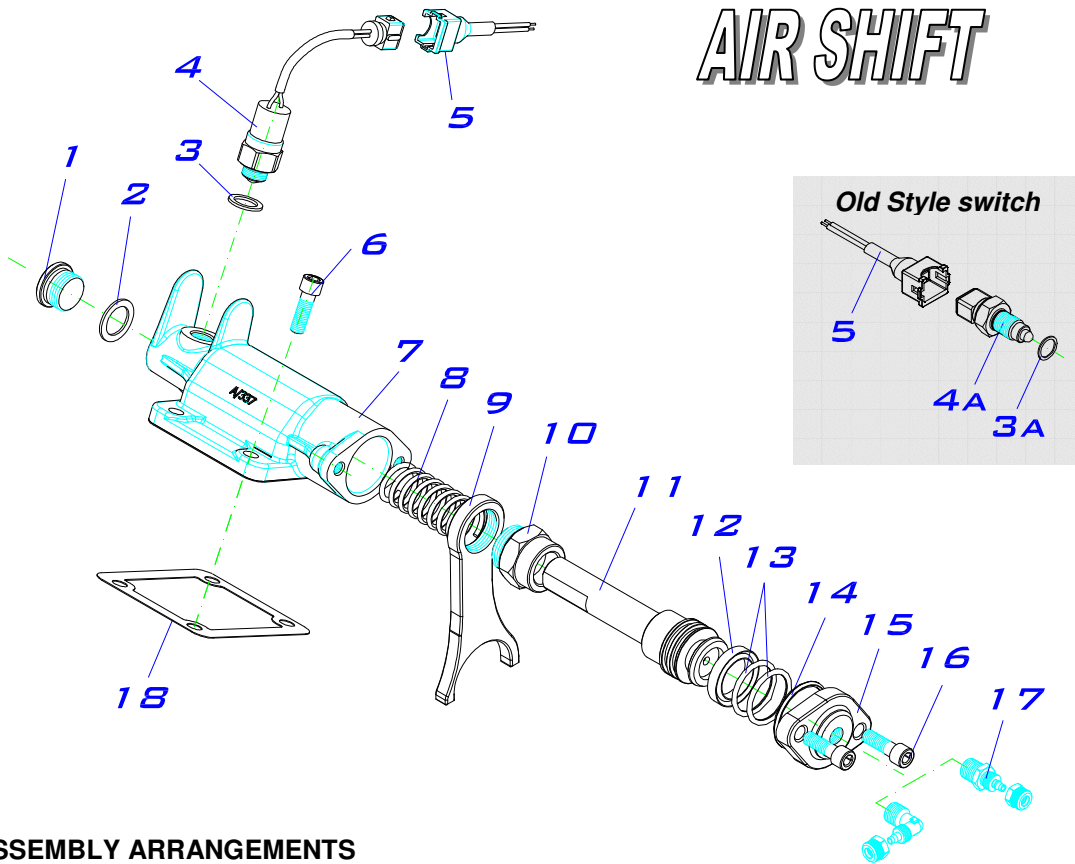


PTO 2000 SERIES
SAE "B" 2/4 BOLT

PTO 2000 & 2010 Series SAE "B" 2/4 Bolt

ITEM	QT.	DESCRIPTION	DIMENS.	CODE	BZ USA PART
1	2	Snap ring DIN 471 AS	∅ 20	101010036	SR036
2	2	O-ring (VITON)	15 x 2.5	107100030	OR022
3	2	Conical bearing 32304 A	20 x 52 x 22.25	113300023	RB023
4	1	Input gear		Table 1	TABLE 1
5	1	Upper gear		Table 2	TABLE 2
6	1	Snap ring WRE	∅ 55	101100001	SR001
7	*	Gasket	Spe = 0.5 mm	108010003	GA8010
	*	Gasket	Spe = 0.3 mm	108010099	GA8015
	*	Gaskets	Spe = 1 mm	108010100	GA8020
8	1	Axial disc AS 2035.	20x35x1	114010008	WA008
9	1	Adjusting nut		214115631	
10	1	Adjusting bush		200115621	
11	1	Stud DIN 914, 2000	M6 x 14	117010040	
	1	Stud DIN 913, 2010	M6 x 12	117010009	SS008
12	1	Idler shaft, standard		203045451	IP545
12A	1	Idler shaft, A ratio only		203041181	IP118
13	6	Hex nut DIN 985 8.8, self locking	M12	119020003	NU003
14	4	Screw DIN 931 13h, hex nut	1/2" x 30 UNC	116020025	CS025
15	12	Washer DIN 125	∅ 13	102010005	
16	1	Gasket 2/4 bolt		108010091	GA091
17	1	Circlip DIN 472	∅ 70	101020012	
18	1	Oil seal BASL (VITON)	35 x 72 x 10	112090030	
19	1	Housing flange, open end		202120911	FL904X
20	1	Conical bearing 30307 A	35 x 80 x 22.75	113300004	RB004
21	1	Snap ring DIN 471	∅ 35	101010005	SR005
22	1	Output shaft, mount pump		Table 3	TABLE 3
23	1	Bottom gear		Table 2 & 4	TABLE 2 & 4
24	4	Stud (14 / 21)	M12 – 175 x 49	117020096	ST096
25	1	Housing 8 hole, PTO 2000 series		202110111	HS2000
	1	Housing 8 hole, PTO 2010 series		202110112	HS2010
26	6	Screw DIN 931 12.9, PTO 2000 series.	7/16" UNC x 35	116020020	CS020
		Screw DIN 931 12.9, PTO 2010 series	7/16" UNC x 32	116020029	CS029
27	2	Stud L= 53 mm	M12-1.75 x 25 / 7/16" UNC x 17	116020043	ST026
28	1	O-ring (VITON)	75 x 2.5	107100044	OR093
29	2	Gasket		108010038	GA4015EC
30	1	Conical bearing 30305 A	25 x 62 x 18.25	113300003	RB003
31	1	Cover, closed end		208010931	EC931
32	16	Washer DIN 125	12.5 x 20 x 2	102090009	WA009
33	4	Screw DIN 933 8.8, hex head sealed	M12 x 30	116030012	
34	1	Conical bearing 30204, "B" ratio only	20 x 47 x 15.25	113300035	RB035 "B" ONLY
35	1	Input gear, "B" ratio only		Table 4	TABLE 4
36	1	Upper gear, "A" ratio only		Table 4	TABLE 4
37	2	Bearing	20x30x30	113010003	RB015
38	1	Spacer		209013491	SP491
39	2	Antifriction washer		211013431	WA431

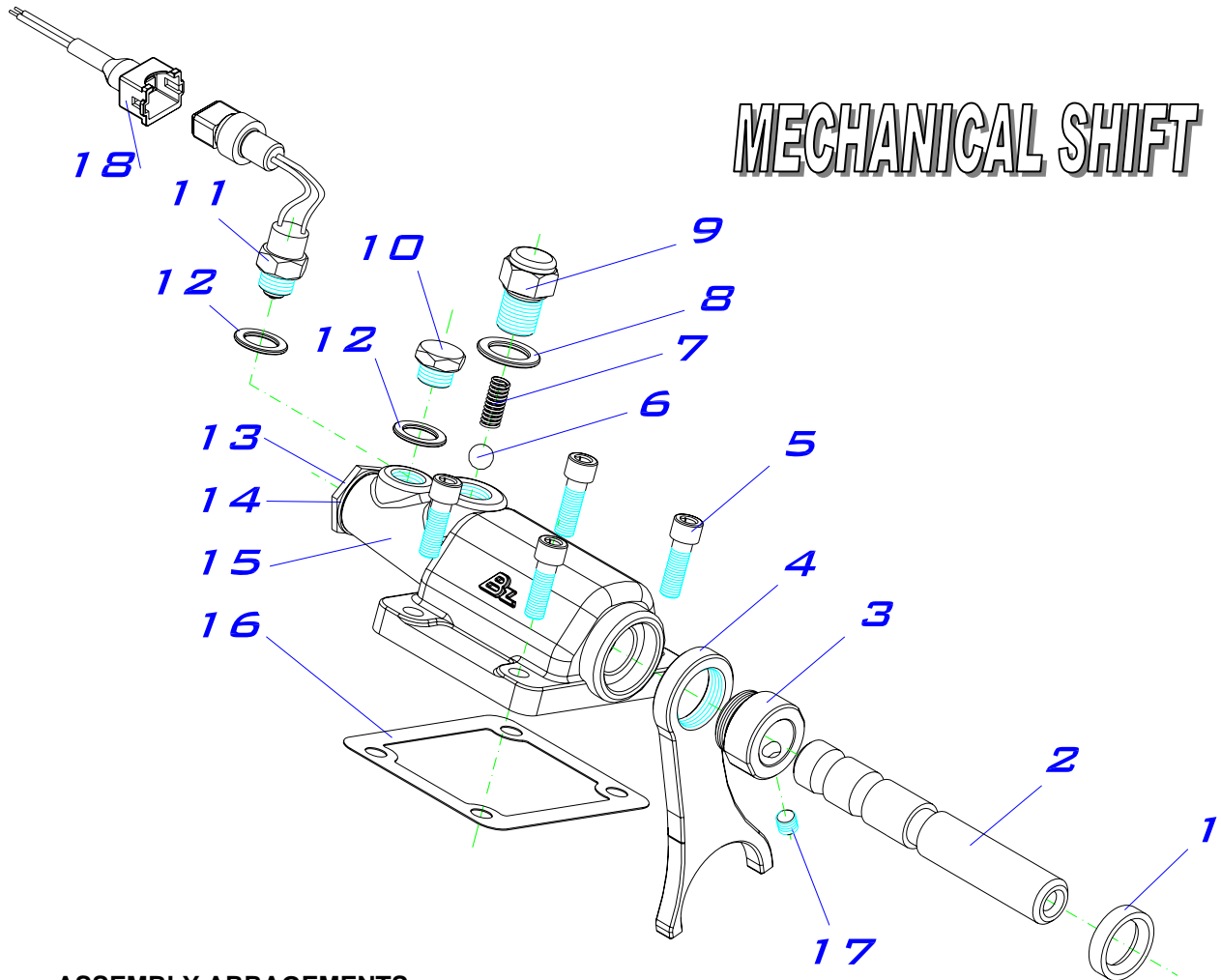
AIR SHIFT



ASSEMBLY ARRANGEMENTS

Type1: Right, Forward

ITEM	QT.	DESCRIPTION	DIMENS.	CODE	BZ USA Part #
1	1	Plug	M22	118020053	PL053
2	1	Aluminium washer	22 x 28 x 1.5	102050003	WA003
3	1	Cooper washer (current style)	14x20	102060016	WA016
3a	1	Cooper washer (old style)	12x18x2	102060021	WA021
4	1	Electrical switch (current style)	9/16" UNF	100070012	SW012
4a	1	Electrical switch (old style)	M12 - 150	100070001	SW002
5	1	Connector cable		906599	SWK599
6	4	Screw DIN 912 8.8, allen head	M8 x 25	116010009	AS009
7	1	Air housing		202023371CH	SH371CH
8	1	Spring piston		109010056	SP056
9	1	Fork		205010631	SF631
10	1	Fork spacer		209110321	SF321
11	1	Piston		204010811	PS811
12	1	Collar (VITON)	25 x 35 x 6.5	105010017	BU009
13	2	O-ring (VITON)	29 x 3	107100096	OR045
14	1	O-ring (VITON)	36,17x2,62	107100004	OR029
15	1	Piston cover, open end 1/4" BSP		208010701	PC701
16	2	Screw DIN 912 8.8, allen head	M8 x 20	116010008	AS008
17	1	Straight connector	1/4" BSP	9028116	FI216-S
		Elbow connector	1/4" BSP	9028216	FI216-E
18	1	Gasket		108010022	GA4015SC

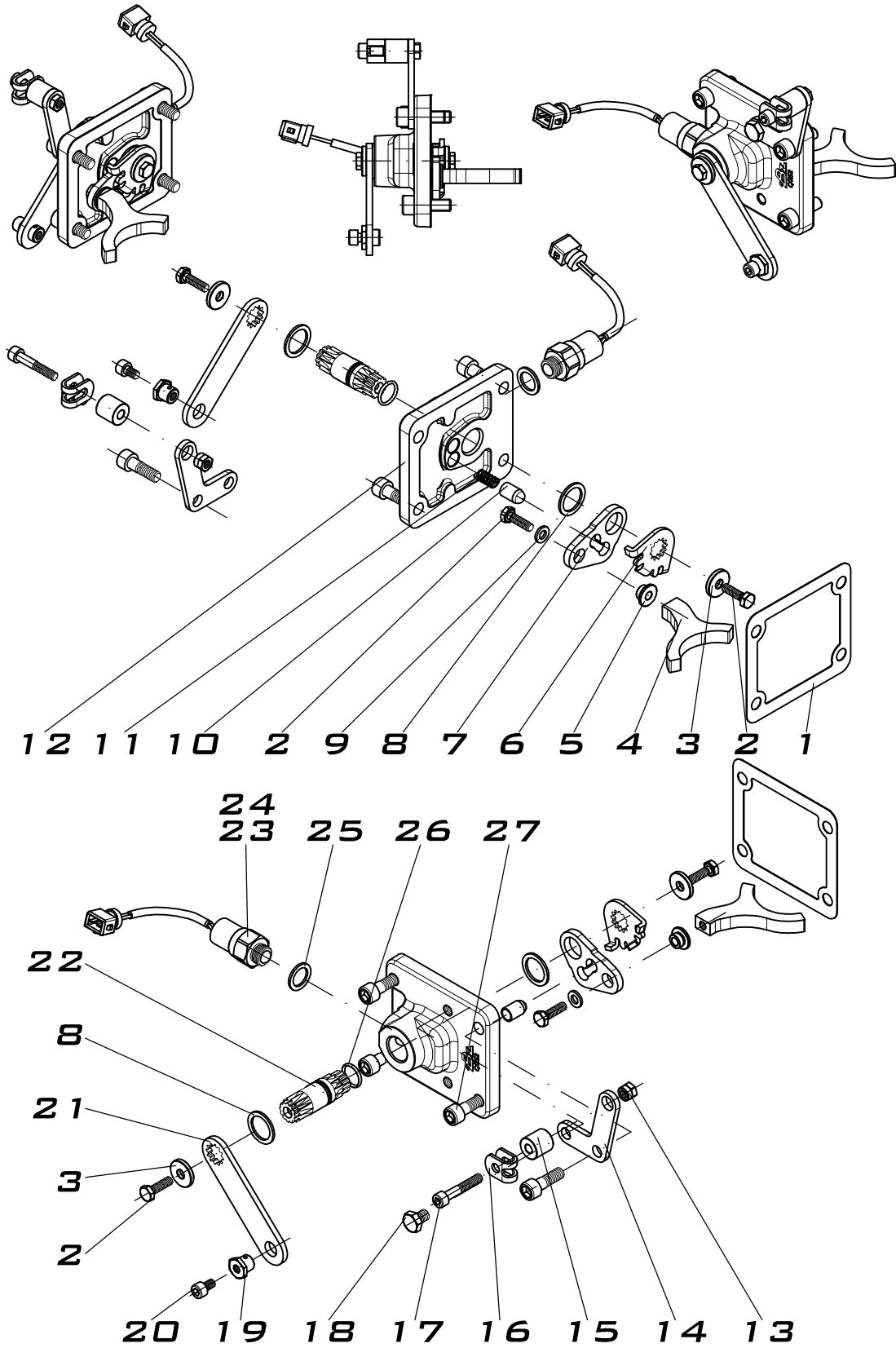


ASSEMBLY ARRANGEMENTS

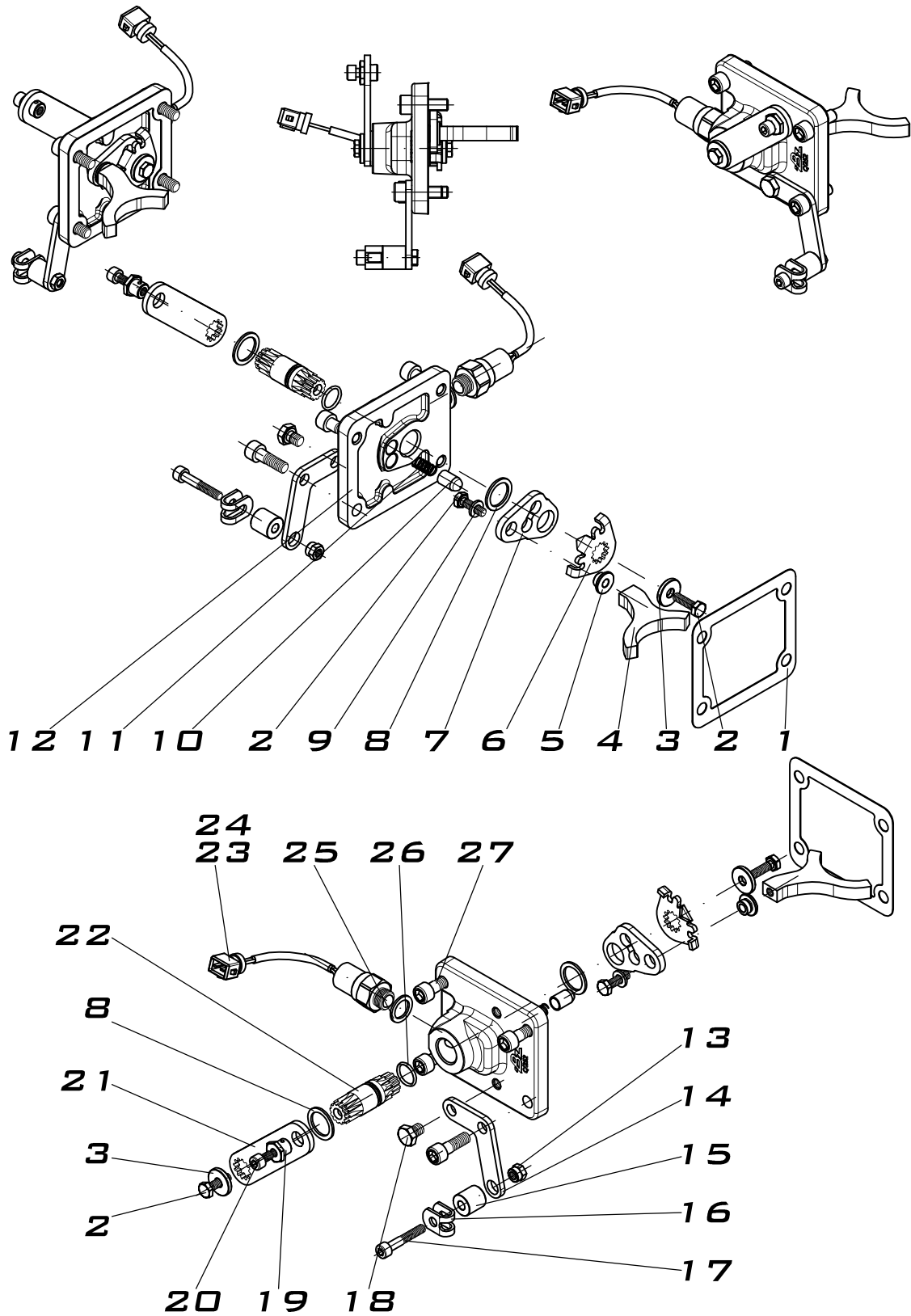
Type 1: Right, Forward

ITEM	QT.	DESCRIPTION	DIMENS.	CODE	BZ USA Part #
1	1	Oil seal BAF UD1	19 x 30 x 7	112010017	SE017
2	1	Shifter shaft		212016072	SB072
3	1	Spacer fork		200013981	BU981
4	1	Fork		205010631	SF931
5	4	Screw DIN 912 8.8, allen head	M8 x 25	116010009	AS009
6	1	Poppet ball	∅ 10	104010001	PB001
7	1	Poppet spring		109010019	SP019
8	1	Aluminium washer	16 x 23	102050010	WA010
9	1	Poppet cap		208020151	CP151
10	1	Switch plug, sealed	9/16" UNF	118020022	CP022
11	1	Mechanical switch	9/16" UNF	100070012	SW012
12	2	Copper washer	14 x 20	102060016	WA016
13	1	Plug, M14-150		208021131	AP131
14	1	Aluminium washer	22 x 28 x 1.5	102050003	WA003
15	1	Mechanical housing		202023391	SH391
16	1	Gasket		108010022	GA4015SC
17	1	Stud DIN 913	M8 x 10	117010005	SS005
18	1	Cable with connection	3 m	906599	SWK599

WIRE POSITION 1 - 4



WIRE POSITION 2 - 3



WIRE POSITION 1-4 & 2-3

ITEM	QT.	DESCRIPTION	DIMENS.	CODE	BZ USA CODE
1	1	Gasket		108010022	
2	3	Screw DIN 933 8.8	M6x20	116030025	
3	2	Washer type DIN 125	6.5x20x3	102090021	
4	1	Mechanical piston fork		205010712	
5	1	Fork stop bush		200103022	
6	1	Pusher fork support		200102991	
7	1	Fork support		200102983	
8	2	Copper washer	18x24	102060020	
9	1	Washer din 9021	Ø6	102080003	
10	1	Pin		200103011	
11	1	Spring		109010112	
12	1	Mechanical piston housing		202112521	
13	1	Nut for clamp		214111481	
14	1	Support		200103332	
15	1	Bush		209110762	
16	1	Cable clamp		200101471	
17	1	Screw DIN 912 8.8	M6x35	116010005	
18	1	Screw din 933 8.8	M8x10	116030001	
19	1	Anchorage nut		214111491	
20	1	Screw din 912 8.8	M6x10	116010132	
21	1	Piston lever		200103001	
22	1	Mechanical piston bar		212110252	
23	1	Switch N.40013 02		100070012	
24	1	Cable 3 m with connection		906599	
25	1	Copper washer	14x20x1.5	102060016	
26	1	O-ring	14x1.78	107010072	
27	4	Screw DIN 912 8.8	M8x25	116010009	

PTO 1000/2000 SERIES

TABLE 1 INPUT GEAR

CODE	GEAR BOX	INPUT GEAR
...01...	FULLER SERIES	R/675 Z=22
...02...	UNIVERSAL	R/683 Z=19
...03...	SPICER	R/736 Z=22
...05...	SPICER	R/677 Z=21
...06...	FULLER (TREMEC)	R/679 Z=22
...07...	NAVISTAR	R/693 Z=23
...08...	SPICER	R/682 Z=24
...09...	SPICER	R/684 Z=25
...10...	CHEVY	R/678 Z=25
...11...	CHEVY / SPICER	R/699 Z=25
...13...	NEW PROCESS	R/718 Z=26
...14...	FULLER	R/737 Z=39
...15...	EATON / FULLER FS-4005 C/ 4205 C	R/717 Z=19
...16...	ZF	R/716 Z=36
...17...	EATON 6305 A	R/680 Z=22
...18...	EATON FS 3005 / 4005 AB	R/681 Z=19
...20...	DODGE	R/701 Z=26
...21...	ZF S5-42 / 5.72	R/676 Z=29
...22...	EATON / FULLER	R/738 Z=18
...23...	EATON / FULLER FS-3005 B	R/714 Z=17
...24...	MACK	R/695 Z=23
...25...	EATON / FULLER FS 7206 A	R/715 Z=28
...26...	EATON	KIT-804834 Z=19
...27...	EATON / FULLER	R/692 Z=40
...28...	FULLER	R/771 Z=24
...30...	EATON / FULLER	R/698 Z=22
...33...	SPICER	R/697 Z=21
...34...	SPICER	R/696 Z=26
...36...	NEW PROCESS	R/739 Z=22
...42...	FULLER	R/770 Z=23
...50...	ZF	R/694 Z=26
...51...	DODGE	R/702 Z=25
...52...	ZED/F	R/700 Z=34
...56...	TREMEC	R/744 Z=26
...57...	ZF	R/740 Z=23
...61...	FORD	R/754 Z=26
...66...	FULLER	R/862 Z=27
...67...	AISIN	R/870 Z=32
...68...	TREMEC	R/897 Z=27
...69...	MERCEDES G-56 (PTO 1200)	R/931 Z=32
...70...	MERCEDES G-60	R/956 Z=28

PTO 1000 & 2000 Series.

TABLE 2 PTO RATIO GEAR SET

RATIO	CODE	BOTTOM GEAR	UPPER GEAR Z=35
RATIO "C": 73%	800534	R/687	R/686
RATIO "E": 80%	800634	R/654-1	R653-2
RATIO "J": 95%	800734	R/656-1	R/655-2
RATIO "O": 125%	800834	R/658-1	R/657-2
RATIO "R": 137%	801334	R/730	R/729
RATIO "S" 150%	801434	R/732	R/731
RATIO "T": 165%	800934	R/660-1	R/659-2

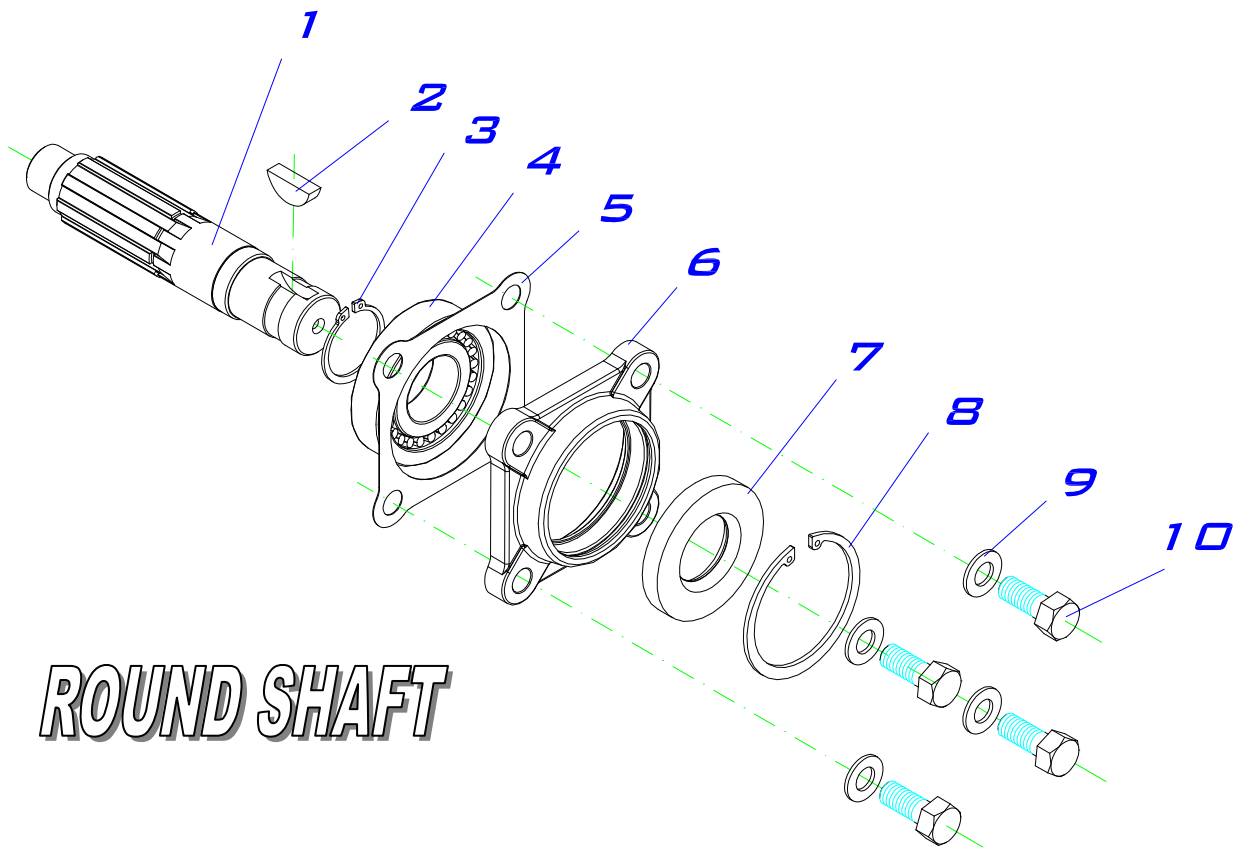
TABLE 3 OUTPUT SHAFT PUMP SAE B 2/4

TEETH N° Z=	REFERENCE	SHAFT CODE
13	E/379	203023791
15	E/386	203023861

TABLE 4

RATIO "A": 50% CODE: 801534..	BOTTOM GEAR	INPUT GEAR	CODE PTO	GEAR BOX
	R/734	R/735	...01...	FULLER SERIES
		R/706	...01...	FULLER SERIES
		R/726	...02...	UNIVERSAL
		R/756	...24...	MACK
		R/752	...64...	ALLISON 2000/2400
RATIO "B": 55% CODE: 801034..	R/705			





ROUND SHAFT

TABLE 5 SHAFT AND KEY TYPE

SHAFT TYPE	CODE	SHAFT ITEM 1	KEY ITEM 2	PTO 1000 & 2000 SERIES
SHAFT Ø1 1/4" RND 5/16" KEY	OS235	E/387	1 1/8" x .5/16"	

PTO 1000 & 2000 SERIES

ITEM	QT.	DESCRIPTION	DIMENS.	CODE	BZ USA Part #
1	1	Output shaft, round shaft mount		Table 5	TABLE 5
2	1	Key woodruff		WK516	WK516
3	1	Snap ring DIN 471	Ø 35	101010005	SR005
4	1	Conical bearing 30307 A	35 x 80 x 22.75	113300004	RB004
5	1	Gasket		108010038	GA4015EC
6	1	Cover, open end		208010662	OC662X
7	1	Oil seal BA SL VITON	35 x 72 x 10	112090030	SE007
8	1	Snap ring, DIN 472		101020013	SR013
9	4	Washer DIN 125		102090009	WA009
10	4	Screw DIN 933, hex head sealed		116030011	CS011

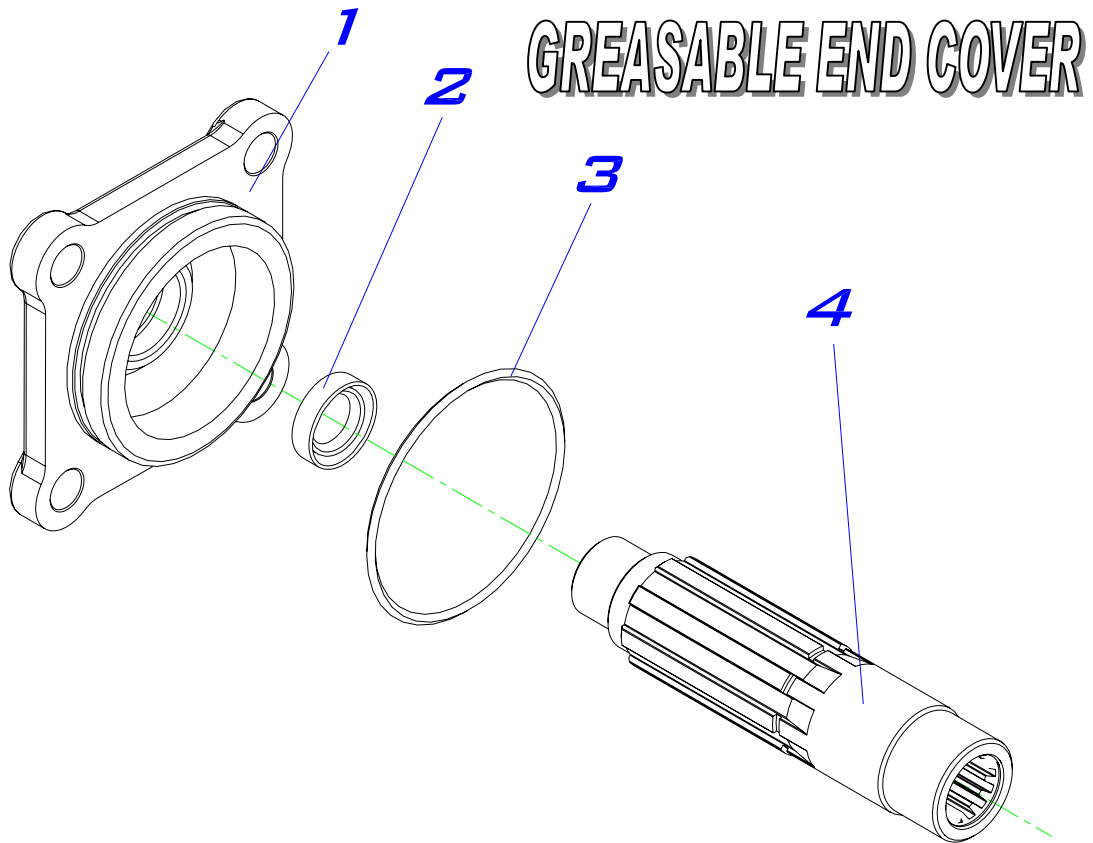


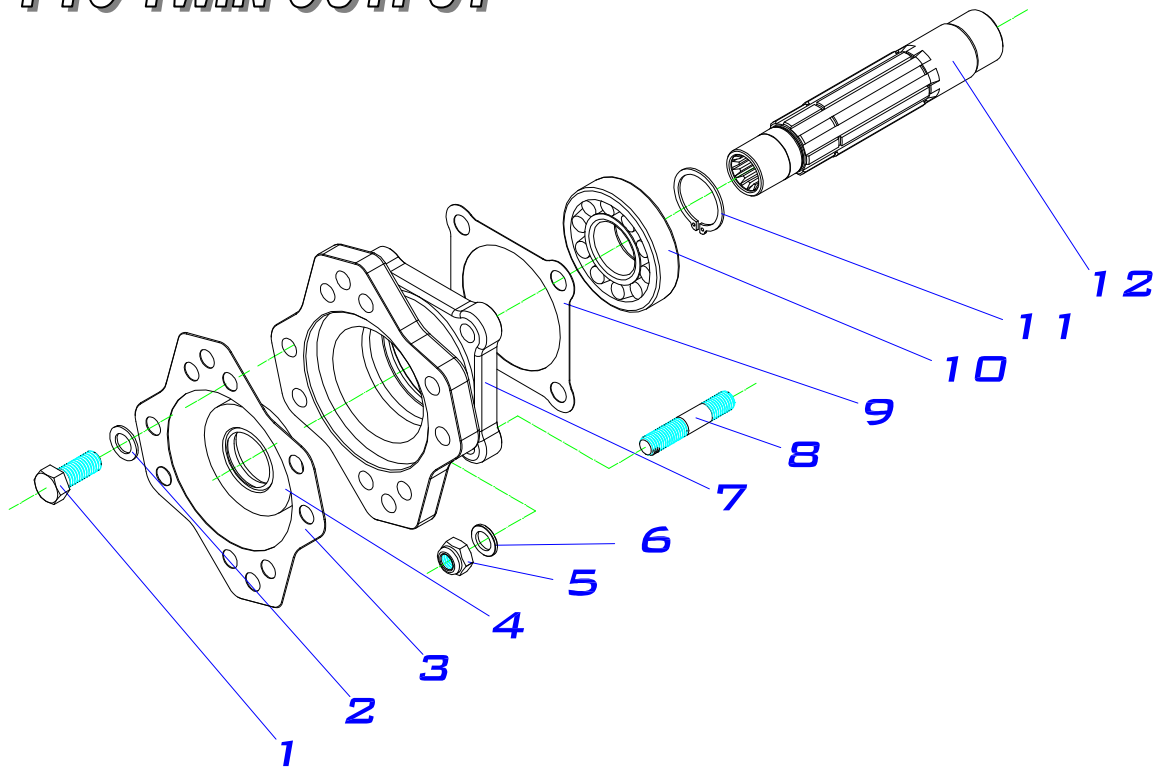
TABLE 6 GREASABLE END COVER

SHAFT TYPE	CODE	SHAFT ITEM 4	PTO 1000 & 2000 SERIES GREASABLE SHAFT
SHAFT SAE "B" 13 TEETH	OSG171	E/417	
SHAFT SAE "B" 15 TEETH	OSG241	E/424	

PTO 1000 & 2000 SERIES

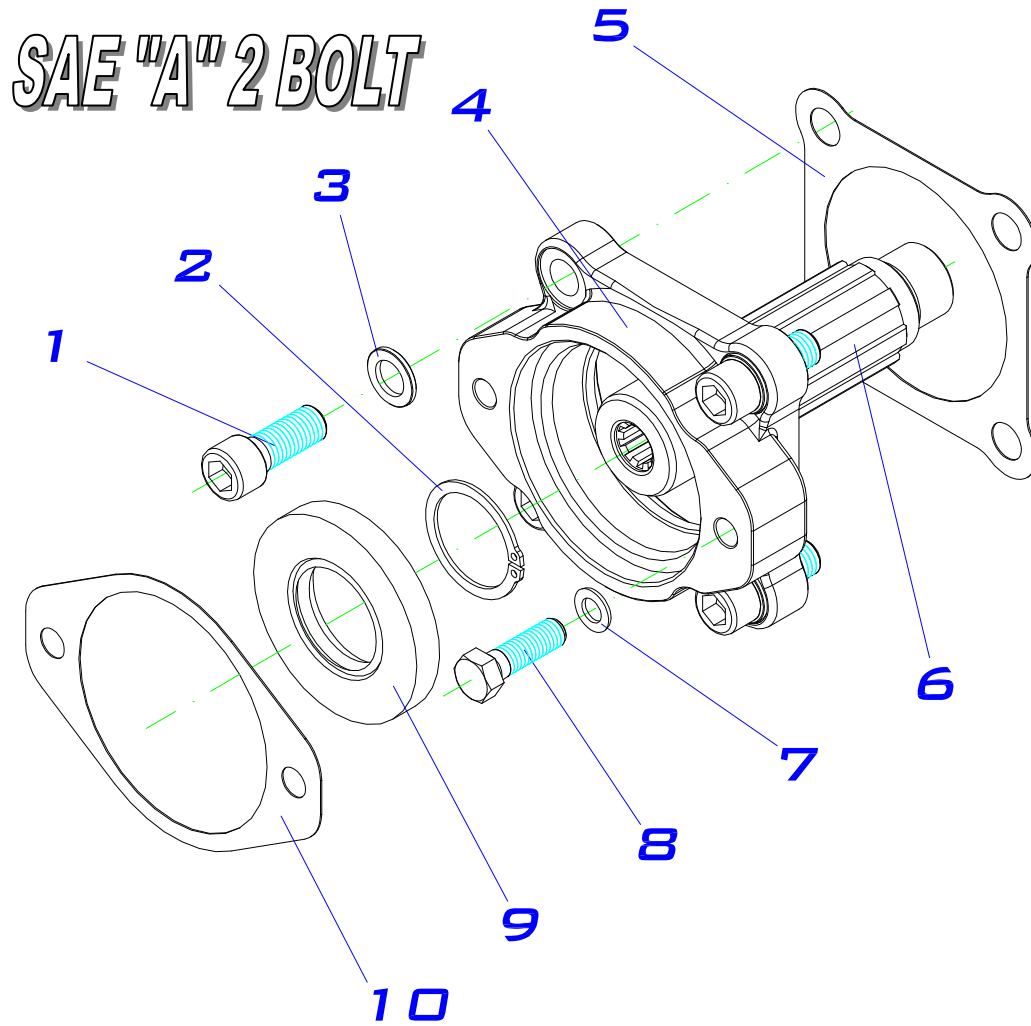
ITEM	QT.	DESCRIPTION	DIMENS.	CODE	BZ USA Part #
1	1	Cover, closed end		208011871	ECG871
2	1	Oil seal BAF UD1 S2DRW	16 x 28 x 7	112090004	SE004
3	1	O-ring	75 x 2.5	107010093	OR093
4	1	Output shaft, greasable		Table 6	TABLE 6

PTO TWIN OUTPUT



KIT PTO 2000 TWIN OUTPUT

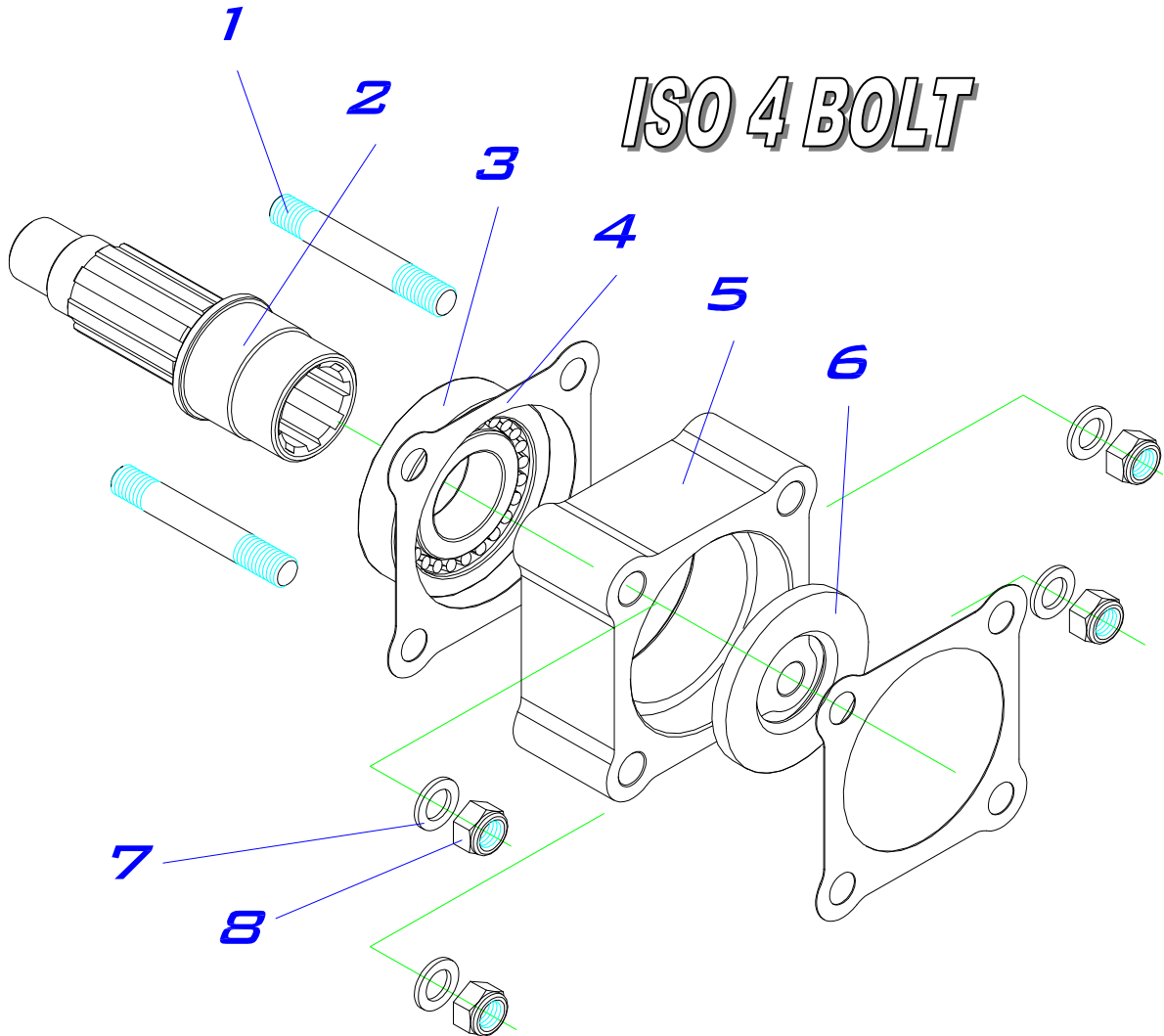
ITEM	QT.	DESCRIPTION	DIMENS.	CODE	BZ USA Part #
1	4	Screw DIN 931, hex head	1/2" UNC x 32	116020025	CS025
2	4	Washer DIN 125	Diam. 13	102010002	WA012
3	1	Gasket		108010091	GA091
4	1	Oil seal BA SL VITON	35 x 72 x 10	112090030	SE007
5	4	Self locking nut DIN 985	M12	119020003	NU003
6	4	Washer DIN 125	12.5 x 20 x 2	102090009	WA009
7	1	Adapter housing SAE B 2/4 bolt		202120911	FL904X
8	4	Stud L=49mm, sealed	M12-175 (21/14)	117020096	ST096
9	*	Gasket	Spe.=0.3mm	108010098	GA4010
	*	Gasket	Spe.=0.5mm	108010038	GA4015
10	1	Conical bearing 30307 A	35 x 80 x 22.75	113300004	RB004
11	1	Snap ring DIN 471	Diam. 35	101010005	SR005
12	1	Twin output splined shaft, Z=13		203024321	OS321



PTO 1000 & 2000 SERIES

SAE "A" 2 BOLT Z=9
 SAE "AA" 2 BOLT Z=13

ITEM	QT.	DESCRIPTION	DIMENS.	CODE	BZ USA Part #
1	4	Screw DIN 912 8.8	M12 x 30	116010163	CS030
2	1	Snap ring DIN 471	Ø 35	101010005	SR005
3	4	Washer DIN 125	12.5 x 20 x 2	102090009	WA009
4	1	Housing flange, open end		202130451	FL451
5	1	Gasket		108010038	GA4015EC
6	1	Output shaft, mount pump Z=9		203024071	OS071
	1	Output shaft, mount pump Z=13		203025511	OS511
7	2	Washer AET	Ø 10	102010003	WA001
8	2	Screw DIN 931, hex head	3/8" UNC x 32	116020035	CS035
9	1	Oil seal BA SL VITON	35 x 72 x 10	112090030	SE007
10	1	Gasket 2 bolt		108010113	GA113



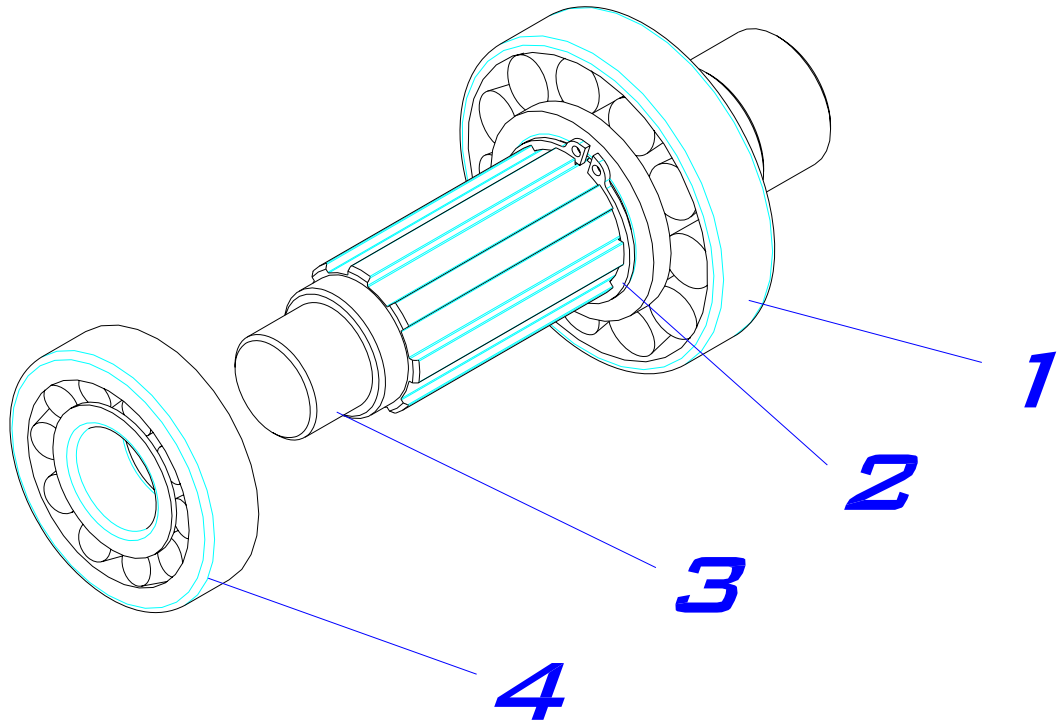
PTO 1000 & 2000 SERIES

ISO 4 BOLT

DESCRIPTION	CODE	PTO 1000 & 2000 SERIES ISO 4 BOLT
CONVERSION KIT TO ISO 4 BOLT	AD800535	

ITEM	QT.	DESCRIPTION	DIMENS.	CODE	BZ USA Part #
1	4	Stud (14/25), sealed	M12-1.75 x 97	117020061	ST061
2	1	Output shaft, mount pump		203013811	OS811
3	1	Conical bearing 32010 X	50x80x20	113300021	RB021
4	2	Gasket		108010038	GA4015EC
5	1	Adapter flange		209100241	FL241
6	1	Oil seal BASL (Viton)	50x 75x 10	112070054	SE013
7	4	Washer DIN 125	Ø12.5x20x2	102090009	WA009
8	4	Hex nut DIN 985 8.8, self locking	M12	119020003	NU003

KIT SHAFT Z=13 WITH BEARINGS.



PTO 1000 & 2000 SERIES

ITEM	QT.	DESCRIPTION	DIMENS.	CODE	BZ USA Part #
1	1	Conical bearing 30307 A	35 x 80 x 22.75	113300004	RB004
2	1	Snap ring DIN 471	∅ 35	101010005	SR005
3	1	Output shaft, mount pump	Z=13	203023791	OS791
4	1	Conical bearing 30305 A	25 x 62 x 18.25	113300003	RB003

PTO USA CODING (SPLINE Z=35)

SERIES:
 1000.- Standard mounting, 6 bolt
 1010.- Deep mounting, 6 bolt
 2000.- Standard mounting, 8 bolt
 2010.- Deep mounting, 8 bolt

VERSIONS
 X.- STANDARD
 G.- GREASEABLE OUTPUT SHAFT.
 P.- OIL PRESSURE LUBE IDLER SHAFT

RATIO: (Z=35)
 1:0.50 (A) => (PTO 2000)
 1:0.55 (B)
 1:0.73 (C) => **800534**
 1:0.8 (E) => **800634**
 1:0.95 (J) => **800734**
 1:1.25 (O) => **800834**
 1:1.37 (R) => **801334**
 1:1.50 (S) => **801434**
 1:1.65 (T) => **800934**

SHIFTER TYPE:

A = AIR WITH 101 AIR KIT	} 902099.- POS. 1/4 903599.- POS. 2/3
C = CABLE.	
E = ELECTRIC 12V.	
F = ELECTRIC 24V.	
L = LEVER	
M = CONSTANT MESH	
P = AIR WITHOUT SWITCH	

N = AIR WITHOUT 101 AIR KIT	} 902299.- POS. 1/4 903899.- POS. 2/3	V = VACUUM
S = AIR WITH 126 AIR KIT		W = WIRE WITH 10' CABLE
T = AIR WITH 127 AIR KIT		X = WIRE NO CABLE
U = AIR KIT WITH 128 AIR KIT		Q = CABLE WITHOUT SWITCH

*** OUTPUT TYPE:**

IA = ISO 4 BOLT
 IB = FLANGE SAE 1300
 IC = FLANGE SAE 1400
 SC= SAE "B" 7/8 ROUND SHAFT
 SD= SAE TYPE "B" 2 BOLT
 SE= SAE TYPE 1 1/4" ROUND SHAFT.
 SF= SAE "A" 2 BOLT 9T.
 SG= SAE TYPE 1 1/2" ROUND SHAFT.
 SH= SAE "AA" 2 BOLT 11T.
 RA= SAE "B" 2/4 BOLT 13T. ROTATABLE
 RB= SAE "BB" 2/4 BOLT 15T. ROTATABLE
 RJ= SAE "C" 4 BOLTS.
 TP= TYRON PUMP (CHELSEA TYPE)

ASSEMBLY ARRANGEMENTS:

- 1.- RIGHT, FORWARD
- 2.- RIGHT, REAR
- 3.- LEFT, FORWARD
- 4.- LEFT, REAR

INPUT GEAR: (Z=35)*

01 = FULLER SERIES (R/675)	18 = EATON FS 3005 /4005 AB (R/681)	42 = FULLER (R/770)
02 = UNIVERSAL (R/683)	20 = DODGE (R/701)	50 = ZF (R/694)
03 = SPICER (R/736)	21 = ZF S5-42/5.72 (R/676)	51 = DODGE (R/702)
05 = SPICER (R/677)	22 = EATON/FULLER (R/738)	52 = ZED / F (R700)
06 = FULLER(TREMEC) (R/679)	23 = EATON/FULLER FS-3005 B (R/714)	55 = MACK/RENAULT (R/748)
07 = NAVISTAR (R/693)	24 = MACK (R/695)	56 = TREMEC (R/744)
08 = SPICER (R/682)	25 = EATON/FULLER FS 7206 A (R/715)	57 = ZF (R/740)
09 = SPICER (R/684)	27 = EATON / FULLER (R/692)	61 = FORD (R/754)
10 = CHEVY (R/678)	28 = FULLER (R/771)	64 = ALLISON (R/752)
11 = CHEVY / SPICER (R/699)	30 = EATON / FULLER (R/698)	66 = FULLER (R/862)
13 = NEW PROCESS (R/718)	33 = SPICER (R/697)	67 = AISIN (R/870)
14 = FULLER (R/737)	34 = SPICER (R/696)	68 = TREMEC (R/897)
15 = EATON/FULLER FS-4005C/4205C (R/717)	36 = NEW PROCESS (R/739)	70 = MERCEDES G60 (R/956)
16 = ZF (R/716)	39 = WARNER (R/741)	
17 = EATON 6305 A (R/680)	41 = WARNER (R/743)	

