

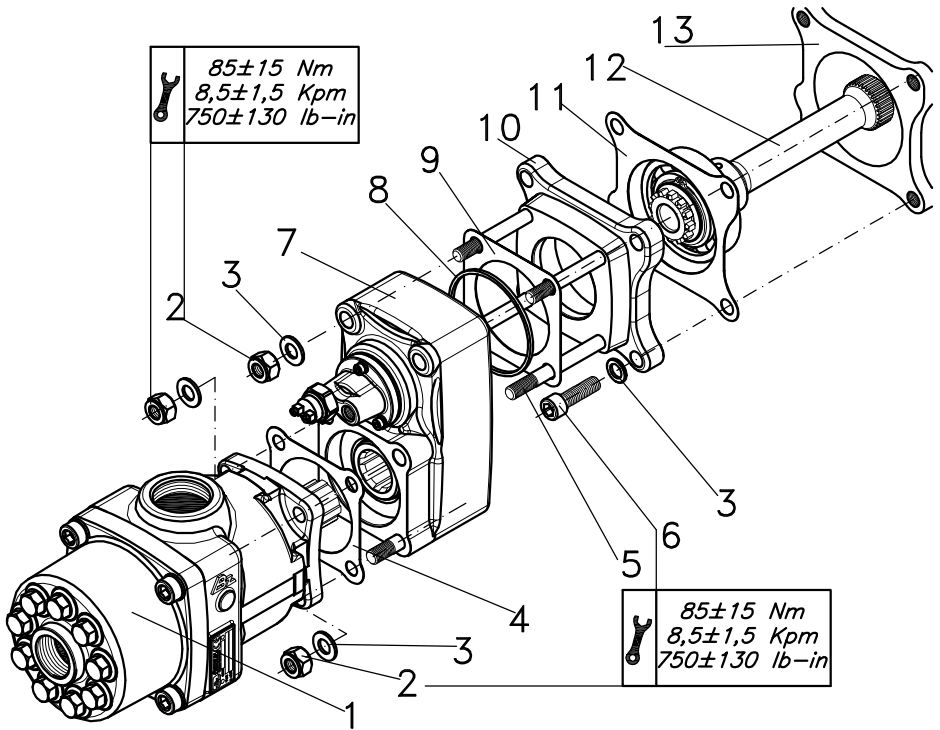
Mounting instructios

Part N.- 116003



VOLVO PTO's

DT 2412C



LIST OF CONTENT

Item	Descripción
1	Pump
2	Nut
3	Washer
4	Gasket
5	Stud
6	Screw
7	Pto housing
8	O-ring
9	Gasket
10	Adapter flange
11	Gasket
12	Shaft kit
13	Gearbox

GENERAL INFORMATION

The following installation instruction for fitment of the Volvo DT 2412C (Part N.- 116003) should be followed in order to ensure good performance and log life.

Where it is obvious that this instructions have not been followed, then warranty claims will not be accepted.

The largest pumps size on these PTO's is Bz-100

INSTALLATION METHOD

Drain the gearbox and clean the cover plate and surrounding area to prevent ingress of dirt.

Remove the PTO cover and clean the sealing surface.

Mount the shaft kit (12) on the gearbox (13), if necessary fit a long set screw (M12) into the other end of the shaft kit. Make sure that the shaft kit is keep clean.

Fit a gasket (11) and the flange (10), on the gearbox (13), applying pressure screws (6) and its washers (3) in accordance with the pattern shown.

Mount a gasket (9) on the adapter flange (10), and besure that o-ring (8) is in its housing. After fit the PTO (7) with a nuts (2) and washers (3), in accordance with the pattern shown.

Mount a gasket (4) between the PTO (7) and pump (1), and fit a pump applying pressure an nuts (2) and its washers (3) in accordance with pattern shown.

Do not forget to refill the gearbox with suitable oil and up to level.